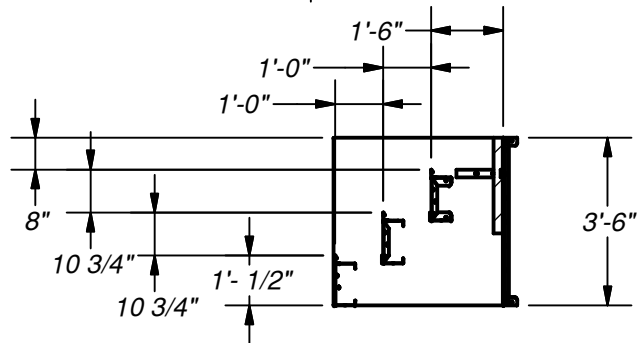
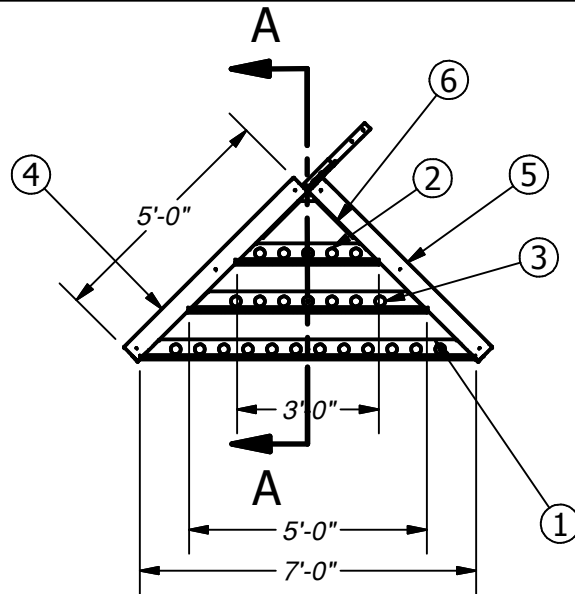




Name: 7' POURED STEP W/ LINER TRACK & SCREED EDGE - NEW STYLE

Number: S0707CP34200XX1

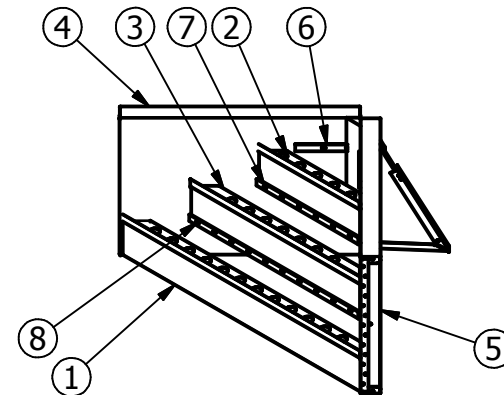
250 Route 61 South, Schuylkill Haven, PA 17972 • 570-385-4733 • fax: 570-385-1318 • CustomerService@CardinalSystemsinc.com



SECTION A-A
SCALE .25:12

PARTS LIST

| ITEM | PART NUMBER | QTY | DESCRIPTION |
|------|-------------|-----|--|
| 1 | PT2262 | 1 | 7'-0" POURED TREAD W/ 2Z (10 1/2") |
| 2 | PT4760 | 1 | 3'-0" POURED TREAD |
| 3 | PT5079 | 1 | 5'-0" POURED TREAD |
| 4 | SP1621 | 1 | 5'-0" STEP PANEL |
| 5 | SP2031 | 1 | 5'-0" STEP PANEL |
| 6 | LT0041 | 2 | 1'-4" LINER TRACK |
| 7 | LT0031 | 1 | 3'-0" LINER TRACK |
| 8 | LT0020 | 1 | 5'-0" LINER TRACK |
| | CS903FC | 1 | FOAM CORNER INSERT |
| | CS902SA | 1 | SQUARE CORNER ANGLE |
| | CS600OPT | 1 | A-FRAME TURNBUCKLE ASSEMBLY |
| | SP0745-6N-3 | 1 | BOX OF 3- 6'-0" LONG NOTCHED SCREED EDGE |
| | CS608DH | 1 | 18' DRIVE STAKE |
| | BP106ST | 1 | LARGE STEP BOLT PACK |
| | BP000TS | 1 | BOX OF TEK SCREWS |



NOTE:
USE REBAR HOLE LOCATIONS
TO PIN WALL AND STEP DECK
SUPPORTS IN PLACE. THEN
POUR 4"-6" OF CONCRETE
AROUND THESE AREAS AND
UNDER THE ASSEMBLY FOR
REINFORCEMENT

Drawn By: jschaeffer

Date: 11/2/2017

Scale: SCALE

Notes: NOTES

This information is the confidential property of Cardinal Systems, Inc. Disclosure or duplication without proper written approval is strictly prohibited. Acceptance and use of this drawing constitutes knowledge and acceptance by the user of the terms and conditions set forth in the notice and warning which accompanied this drawing is incorporated herein and made part hereof and is found on Cardinal Systems, Inc's website at www.CardinalSystemsInc.com



CardinalSystemsInc.com