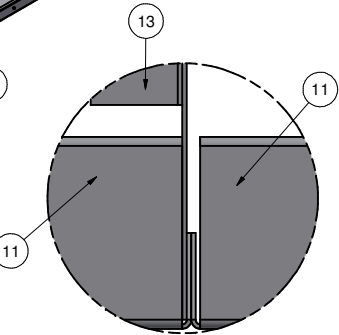
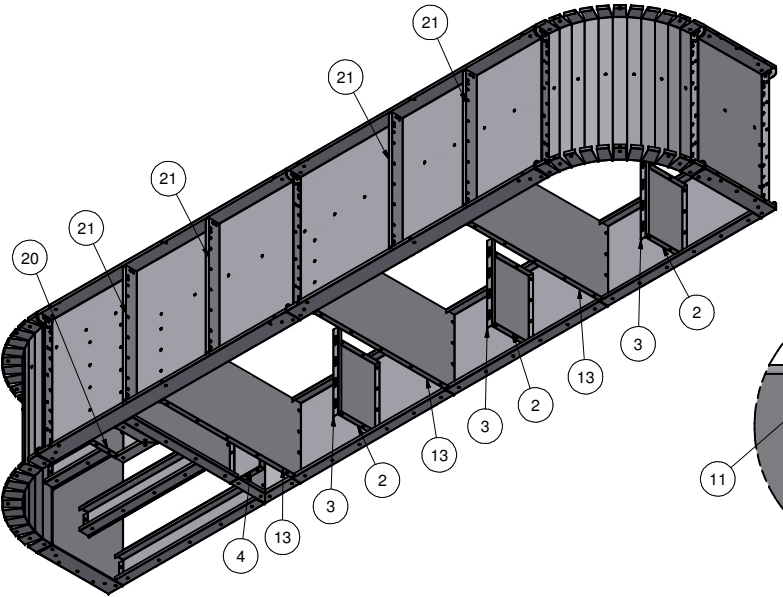
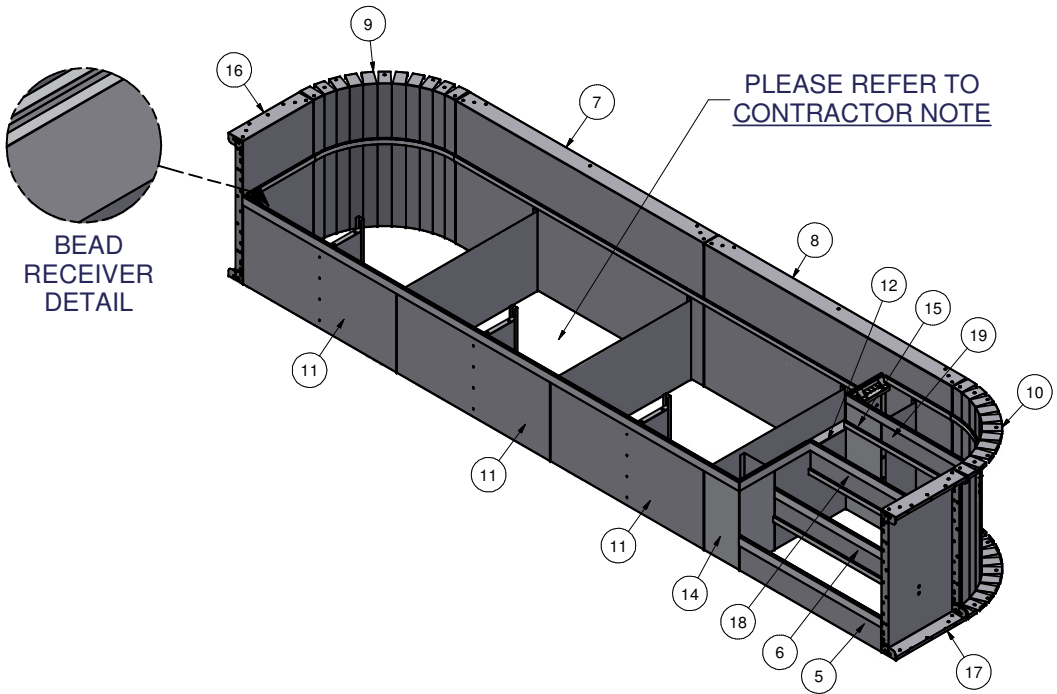


Parts List			
ITEM	QTY	PART NUMBER	DESCRIPTION
1	47	COP-KCVRET-W-1	COP COPING STIFFNER 1 5/8"-1PC
2	3	ESC-7777-SRMS	BRACE, SUNLEDGE RISER MIDDLE SUPPORT
3	3	ESC-9378-DS	BRACE, DRIVE STAKE CHANNEL SET
4	1	ESC-9895-SRS	BRACE, SUNLEDGE RISER SUPPORT
5	1	ESC-17265-BR	STRAIGHT, BOTTOM RISER
6	1	ESC-17265-MR	STRAIGHT, MIDDLE RISER
7	1	ESC-20035-BWL	STRAIGHT, BACK WALL, LEFT
8	1	ESC-20035-BWR	STRAIGHT, BACK WALL, RIGHT
9	1	ESC-20035-CWL	RADIUS, CORENER WALL, LEFT
10	1	ESC-20035-CWR	RADIUS, CORNER WALL, RIGHT
11	3	ESC-20035-SR	STRAIGHT, SUNLEDGE RISER
12	1	ESC-20035-SRB	STRAIGHT, SUNLEDGE RISER, BACK
13	3	ESC-20035-SRS	BRACE, SUNLEDGE RISER SUPPORT
14	1	ESC-20035-SRSR	STR REV, SUNLEDGE RISER
15	1	ESC-20035-SRTR	STR REV, TOP RISER
16	1	ESC-20035-SWL	STRAIGHT, SIDE WALL, LEFT
17	1	ESC-20035-SWR	STRAIGHT, SIDE WALL, RIGHT
18	1	ESC-20035-TMR	STRAIGHT, TOP MIDDLE, RISER
19	1	ESC-20035-TR	STRAIGHT, TOP RISER
20	1	ESC-20035-TRS	BRACE, TOP RISER SUPPORT
21	4	M0065-1	PANEL Z-RIB W/BUTTRESS HOLES
22	0'	OPC-CONREC-XX	NOTCHED CONCRETE RECEPTOR
23	33'	OPC-CONREC-XXU	UN-NOTCHED CONCRETE RECEPTOR
24	35'	SSC-1099-PFT	STEEL STEP PVC BEAD RETAINER (PER FT)



TOP VIEW
BRACE CONNECTED TO
INSIDE FLANGE OF LEFT RISER


CONTRACTOR NOTE:
CONTRACTOR IS RESPONSIBLE FOR SECURING ALL RISERS INTO PLACE WITH REBAR HOLES BEFORE BACKFILLING THIS CUSTOM STEP

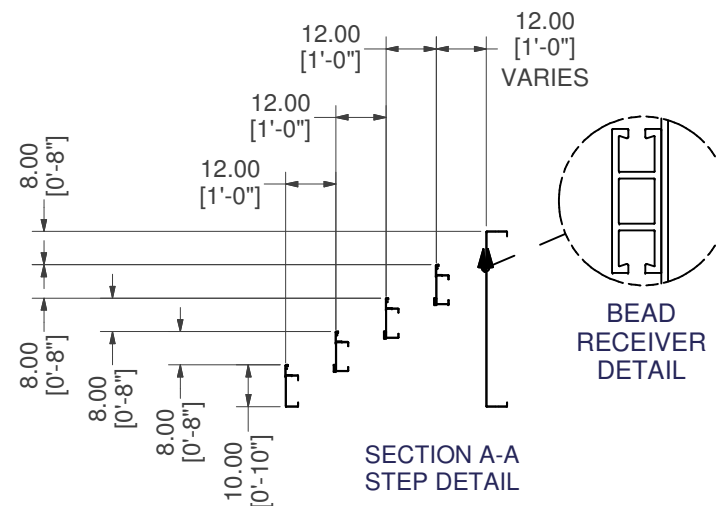
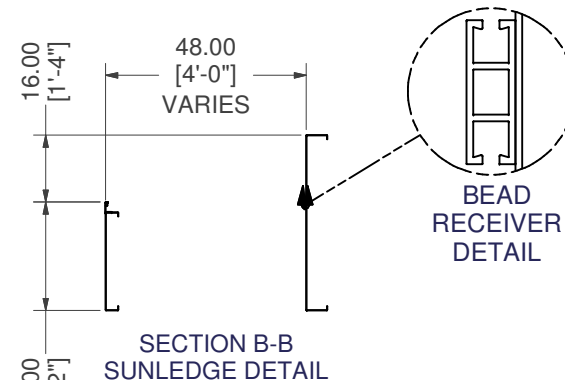
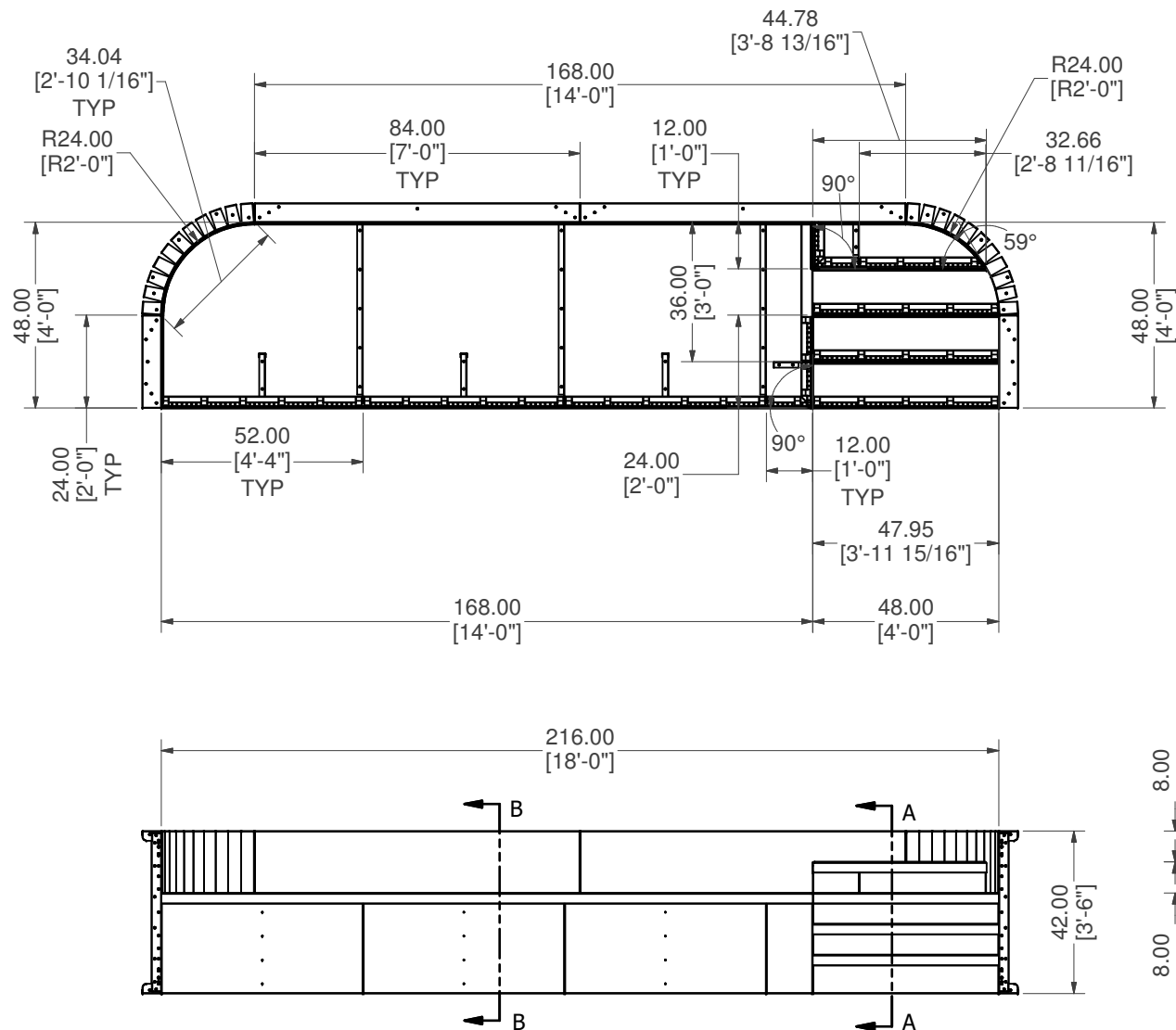
KEEP BEAD RECEIVER ATTACHED TO THE RISERS AND WALL PANELS FOR SHIPPING. A TOTAL OF 420" (35') OF BEAD RECEIVER IS REQUIRED.

CONTRACTOR MUST FIELD FIT ALL CONCRETE RECEPTOR.
TOTALS REQUIRED FOR THIS CUSTOM PRODUCT APPLICATION.
OPC-CONREC-XX (NOTCHED) = 0" (0')
OPC-CONREC-XXU (UN-NOTCHED) = 396" (33')
COP-KCVRET-W-1 (STIFFENER) = 47


CONTRACTOR NOTE:
BACK FILL STEP/ SUNLEDGE AREA WITH COMPACTED EARTH MATERIAL. FINISH STEP/ SUNLEDGE AREA WITH 2" OF HARDEN FLOOR MATERIAL TO MATCH REQUIRED DEPTH (FLUSH WITH TOP OF BEAD RECEIVER).

18' X 4' X 2'R CRN OPEN TOP STEP W/ SUNLEDGE LEFT

PART #: ESC-20035 	WEIGHT: 705.48 lbmass	MACHINE TIME: N/A	FILE/DIRECTORY: C:\Vault\FTW\Design\CUSTOM STEPS\ESC-20000-20999\ESC-20035.idw
	TOLERANCES EXCEPT AS NOTED 0/0 0.0 0.00 0.000 0' ±1/8 ±0.25 ±0.0625 ±0.03125 ±1/2"	MATERIAL: DRAWN BY: SN	DATE : 3/26/2025 SHEET : 1 OF 23
NOTES:			

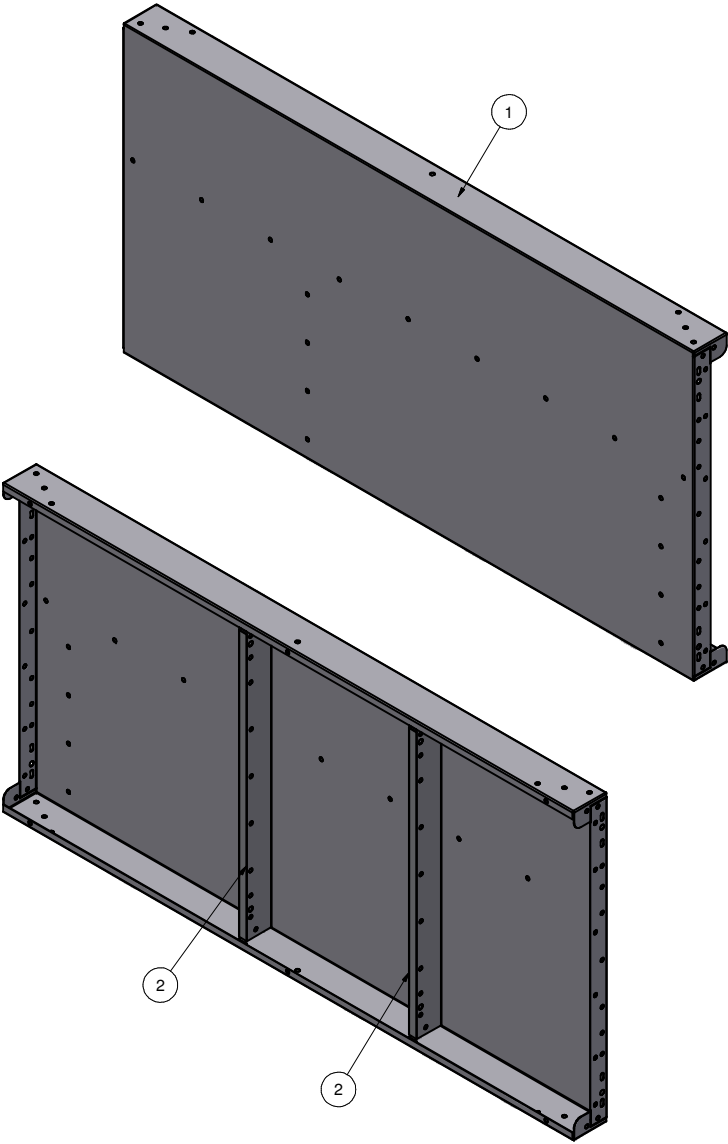
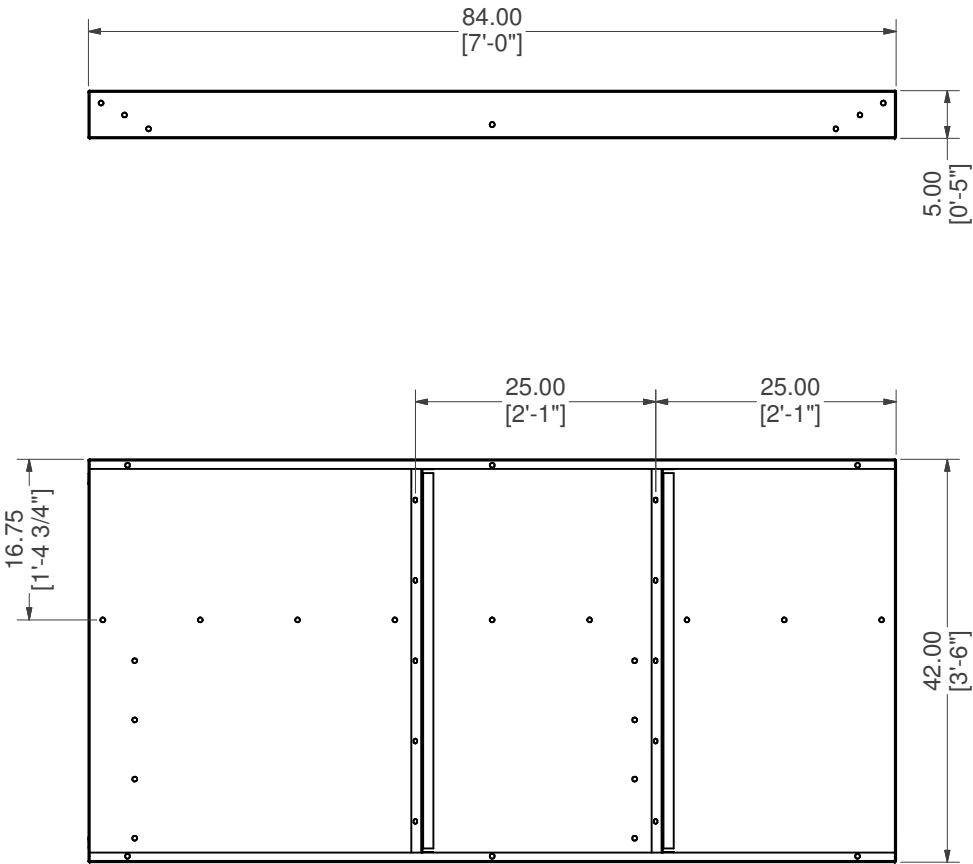


18' X 4' X 2'R CRN OPEN TOP STEP W/ SUNLEDGE LEFT

PART #: ESC-20035	WEIGHT: 705.48 lbmass	MACHINE TIME: N/A	FILE/DIRECTORY: C:\Vault\FTW\Design\CUSTOM STEPS\ESC-20000-20999\ESC-20035.idw	
	TOLERANCES EXCEPT AS NOTED 0/0 0.0 0.00 0.000 0' ±1/8 ±0.25 ±0.0625 ±0.03125 ±1/2"	MATERIAL:	DATE : 3/26/2025	NOTES:
		DRAWN BY: SN	SHEET : 2 OF 23	

Parts List			
ITEM	QTY	PART NUMBER	DESCRIPTION
1	1	ESC-20035-BWL	STRAIGHT, BACK WALL, LEFT
2	2	M0065-1	PANEL Z-RIB W/BUTTRESS HOLES

WELDCODE #32

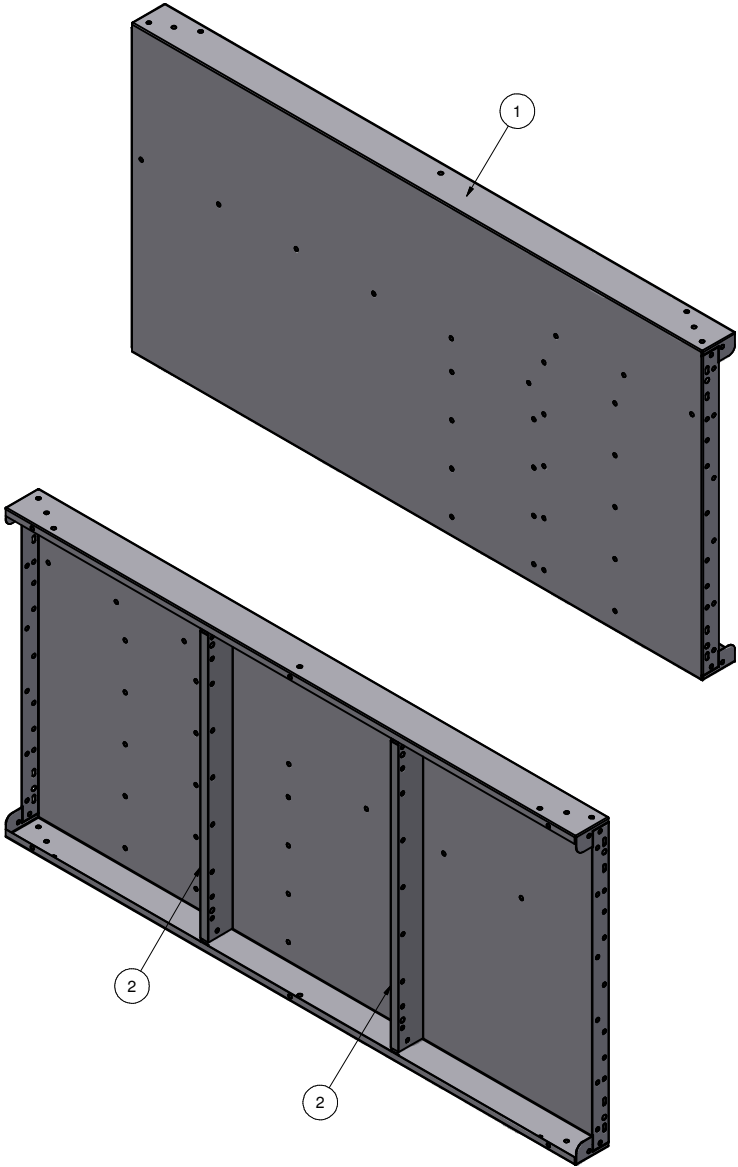
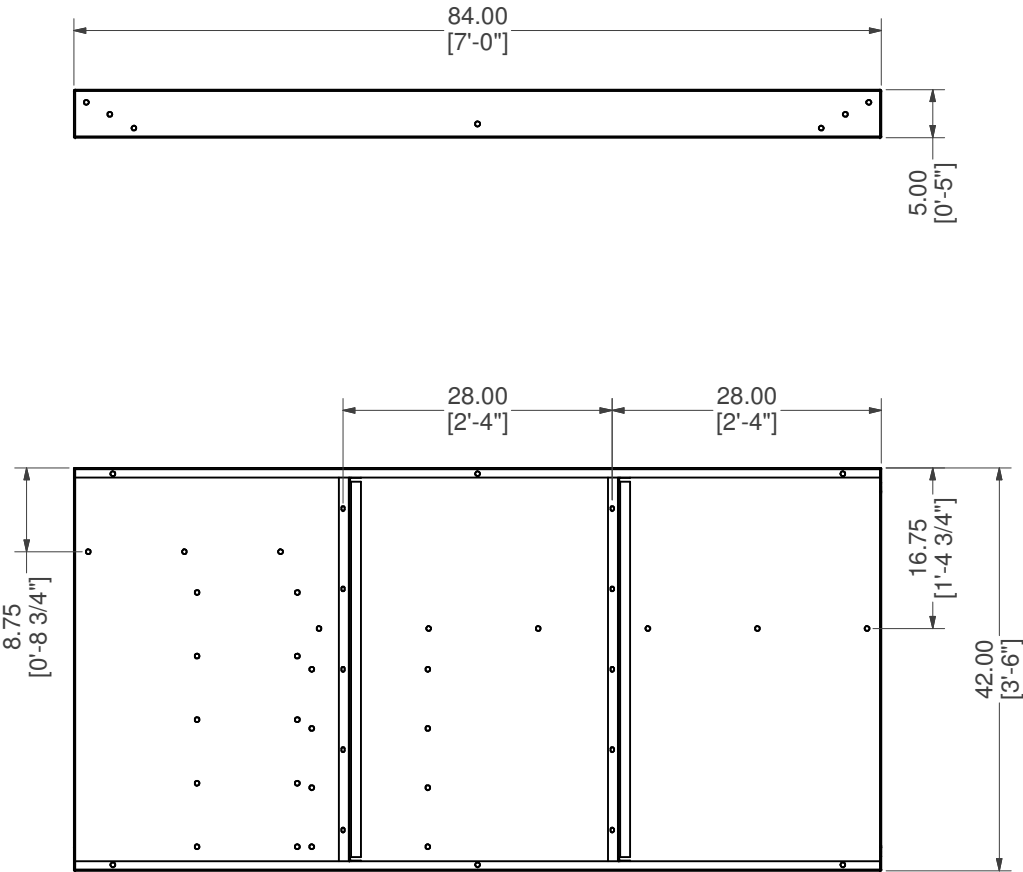


STRAIGHT, BACK WALL, LEFT W/Z-RIB


PART #: ESC-20035-BWL	WEIGHT: 106.19 lbmass	MACHINE TIME: N/A	FILE/DIRECTORY: C:\Vault\FTW\Design\CUSTOM STEPS\ESC-20000-20999\ESC-20035.idw	
	TOLERANCES EXCEPT AS NOTED 0/0 0.0 0.00 0.000 0' ±1/8 ±0.25 ±0.0625 ±0.03125 ±1/2'	MATERIAL: DRAWN BY: SN	DATE : 3/26/2025 SHEET : 3 OF 23	NOTES: WELDCODE #32 LOCATE 25" & 50" FROM LEADING EDGE

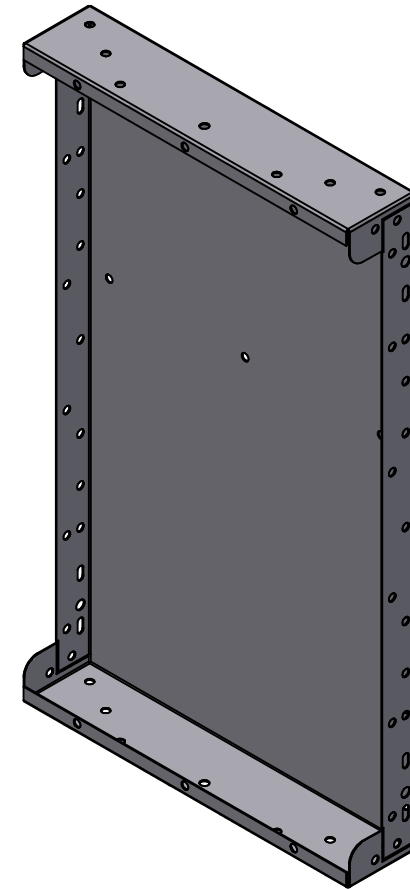
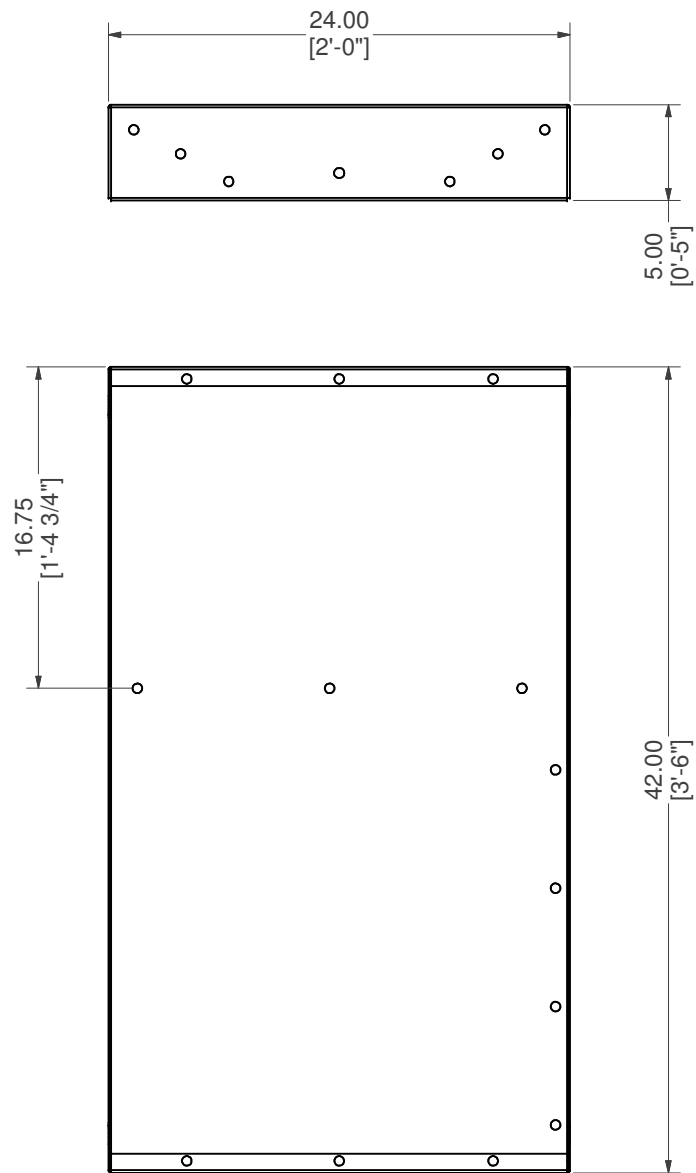
Parts List			
ITEM	QTY	PART NUMBER	DESCRIPTION
1	1	ESC-20035-BWR	STRAIGHT, BACK WALL, RIGHT
2	2	M0065-1	PANEL Z-RIB W/BUTTRESS HOLES

WELDCODE #33




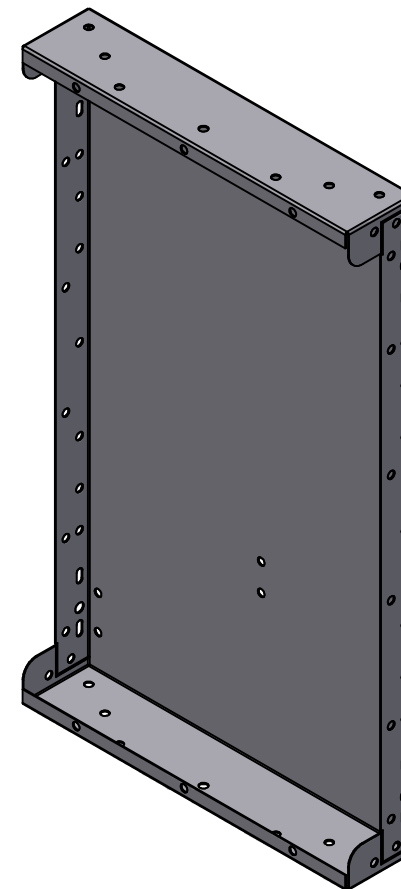
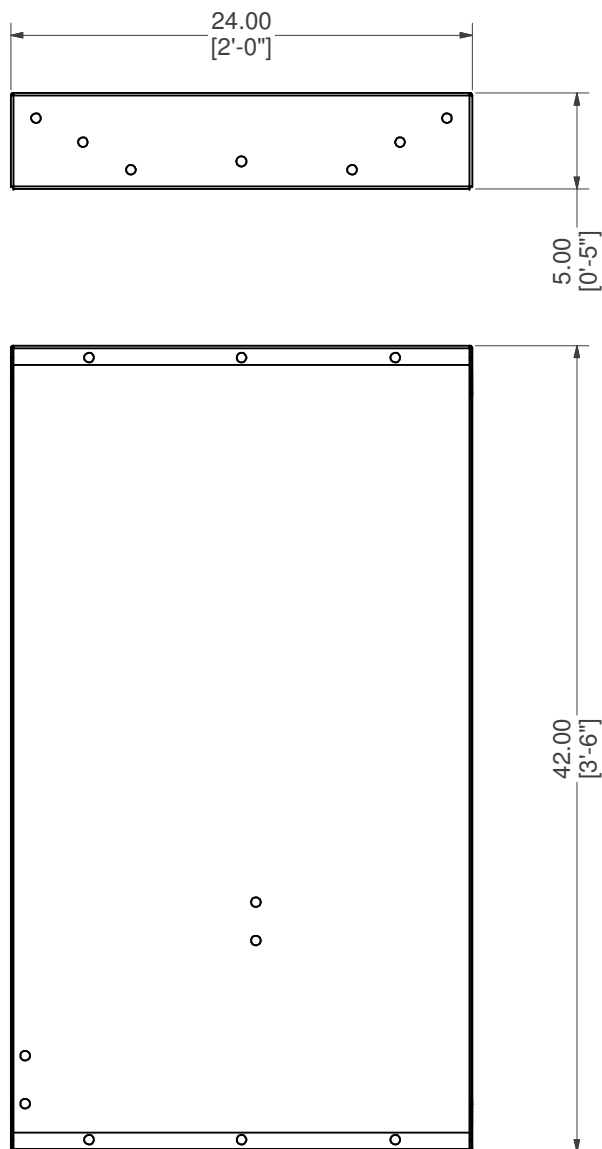
STRAIGHT, BACK WALL, RIGHT W/Z-RIB

PART #: ESC-20035-BWR	WEIGHT: 106.15 lbmass	MACHINE TIME: N/A	FILE/DIRECTORY: C:\Vault\FTW\Design\CUSTOM STEPS\ESC-20000-20999\ESC-20035.idw		
		TOLERANCES EXCEPT AS NOTED 0/0 0.0 0.00 0.000 0" ±1/8 ±0.25 ±0.0625 ±0.03125 ±1/2"	MATERIAL:		DATE : 3/26/2025
DRAWN BY: SN			SHEET : 4 OF 23		




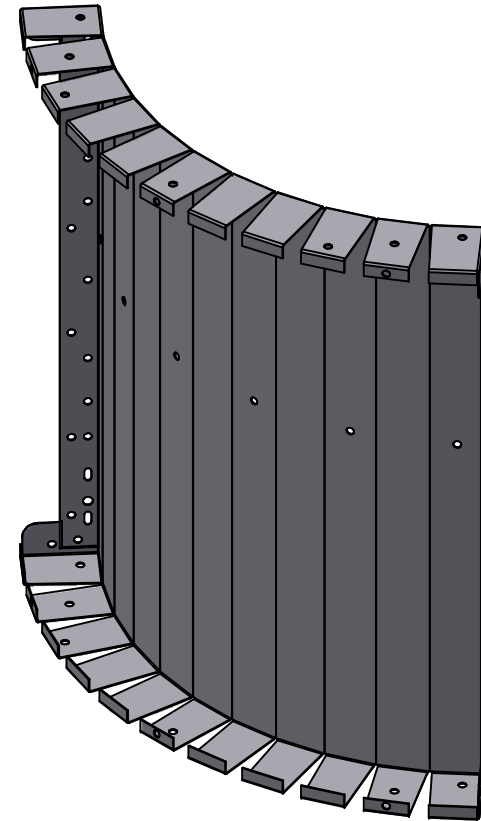
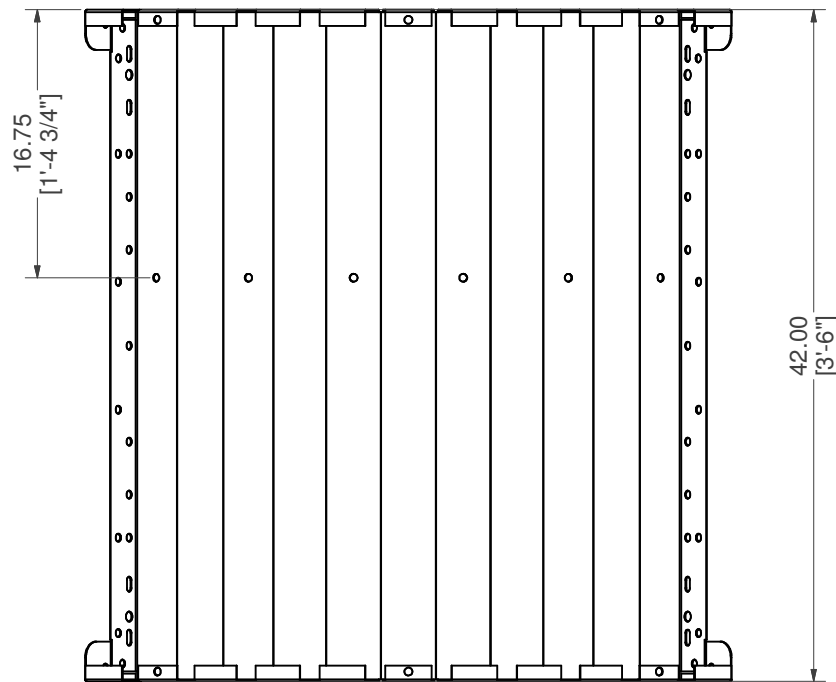
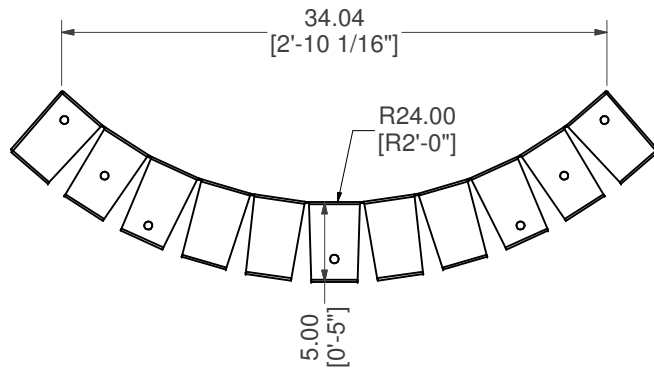
STRAIGHT, SIDE WALL, LEFT

PART #: ESC-20035-SWL	WEIGHT: 30.20 lbmass	MACHINE TIME: N/A	FILE/DIRECTORY: C:\Vault\FTW\Design\CUSTOM STEPS\ESC-20000-20999\ESC-20035.idw	
	TOLERANCES EXCEPT AS NOTED 0/0 0.0 0.00 0.000 0' ±1/8 ±0.25 ±0.0625 ±0.03125 ±1/2'	MATERIAL: 14 GA. GALVANIZED	DATE : 3/26/2025	NOTES:
		DRAWN BY: SN	SHEET : 5 OF 23	




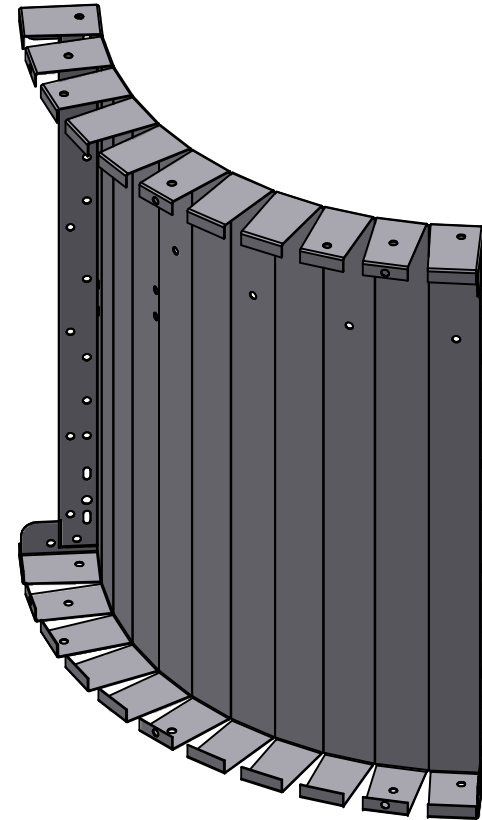
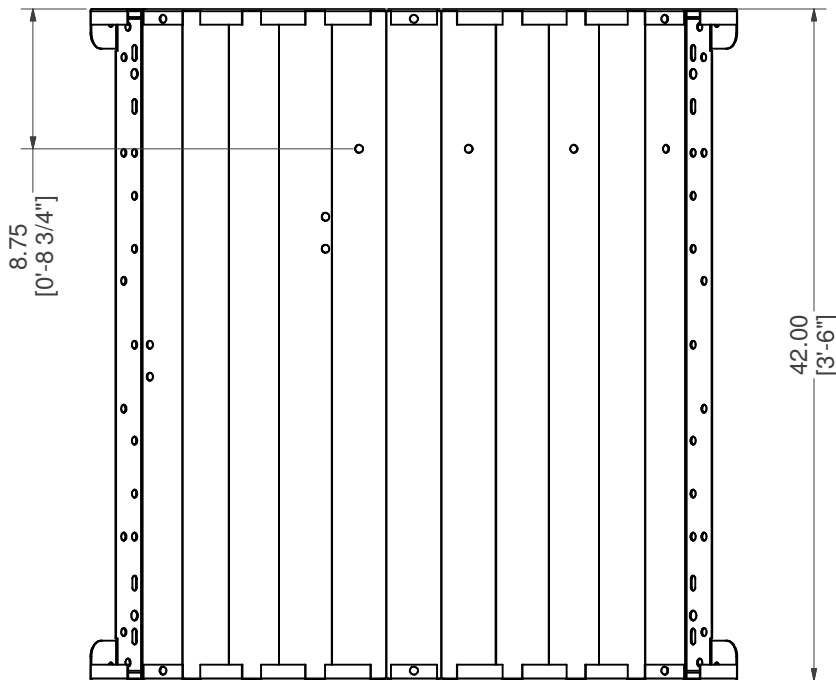
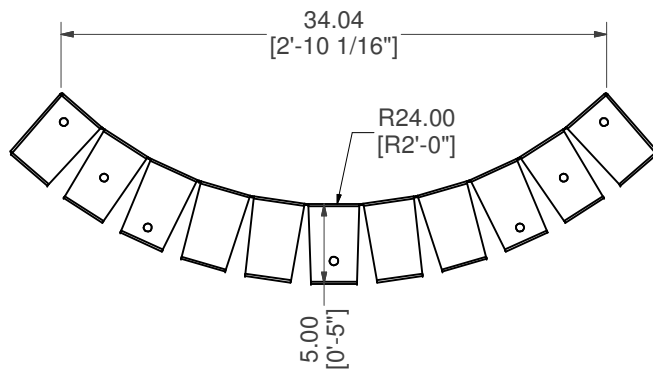
STRAIGHT, SIDE WALL, RIGHT

PART #: ESC-20035-SWR	WEIGHT: 30.21 lbmass	MACHINE TIME: N/A	FILE/DIRECTORY: C:\Vault\FTW\Design\CUSTOM STEPS\ESC-20000-20999\ESC-20035.idw	
	TOLERANCES EXCEPT AS NOTED 0/0 0.0 0.00 0.000 0' ±1/8 ±0.25 ±0.0625 ±0.03125 ±1/2'	MATERIAL: 14 GA. GALVANIZED	DATE : 3/26/2025	NOTES:
		DRAWN BY: SN	SHEET : 6 OF 23	



RADIUS, CORENER WALL, LEFT

PART #: ESC-20035-CWL	WEIGHT: 44.14 lbmass	MACHINE TIME: N/A	FILE/DIRECTORY: C:\Vault\FTW\Design\CUSTOM STEPS\ESC-20000-20999\ESC-20035.idw	
	TOLERANCES EXCEPT AS NOTED 0/0 0.0 0.00 0.000 0' ±1/8 ±0.25 ±0.0625 ±0.03125 ±1/2'	MATERIAL: 14 GA. GALVANIZED	DATE : 3/26/2025	NOTES:
		DRAWN BY: SN	SHEET : 7 OF 23	



RADIUS, CORNER WALL, RIGHT

PART #: ESC-20035-CWR

WEIGHT:
44.13 lbmass

MACHINE TIME:
N/A

FILE/DIRECTORY:

C:\Vault\FTW\Design\CUSTOM STEPS\ESC-20000-20999\ESC-20035.idw

latham
The Pool Company

TOLERANCES EXCEPT
AS NOTED
0/0 0.0 0.00 0.000 0'
±1/8 ±0.25 ±0.0625 ±0.03125 ±1/2"

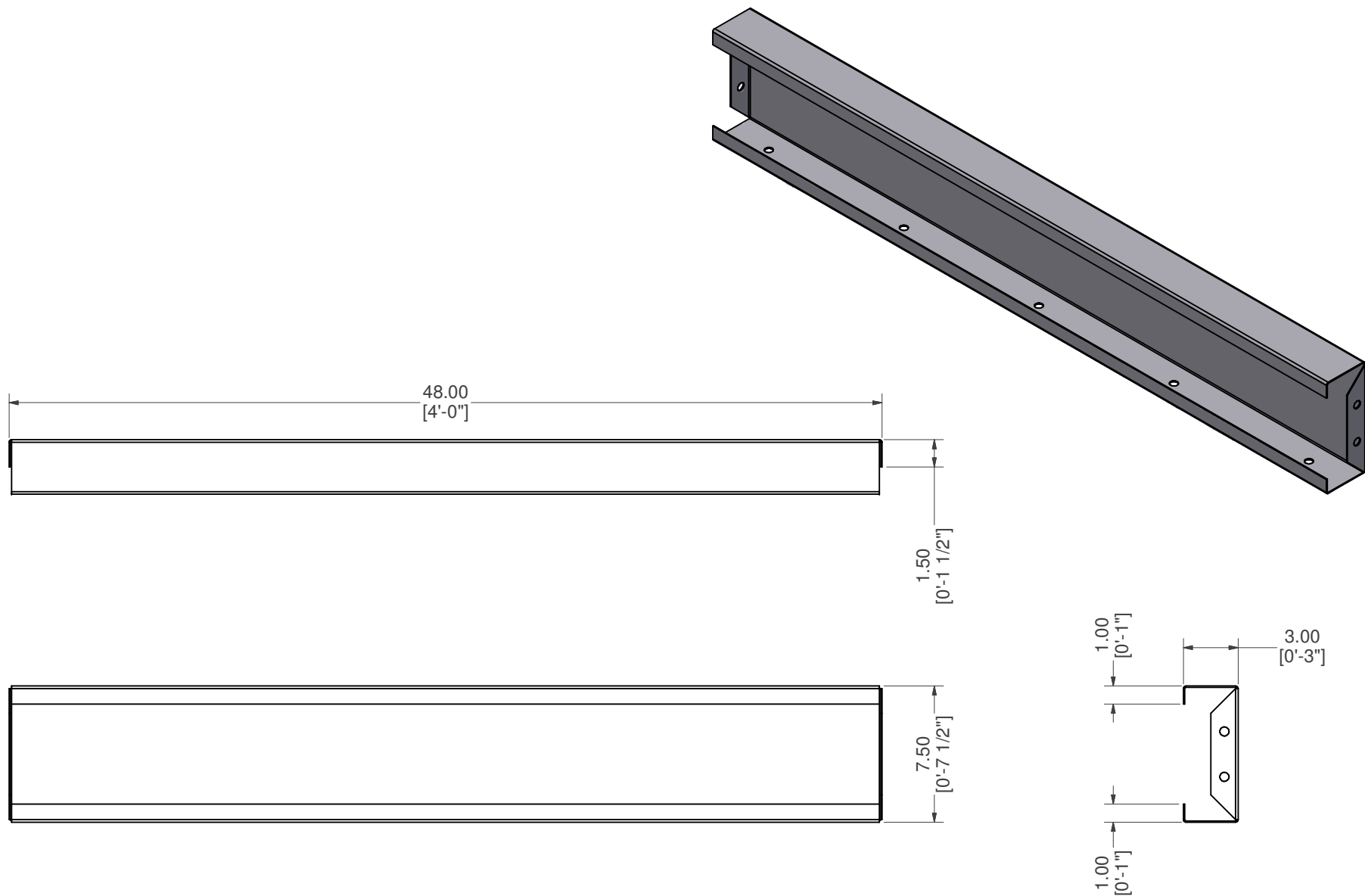
MATERIAL:
14 GA. GALVANIZED

DRAWN BY:
SN


DATE : 3/26/2025

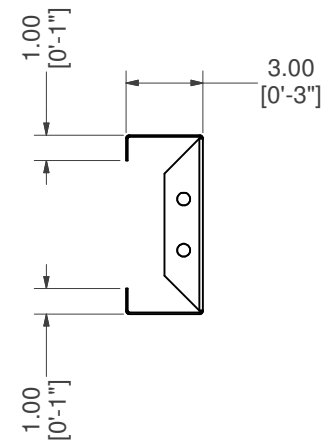
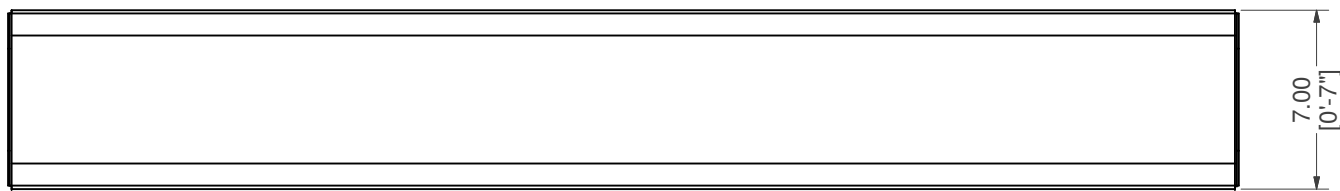
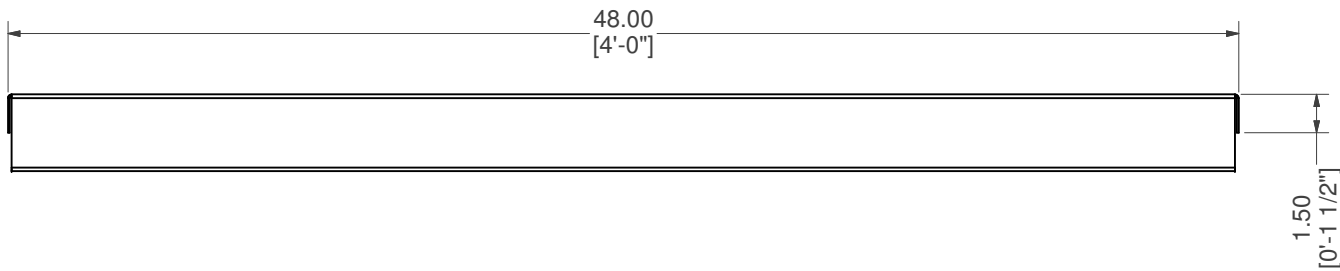
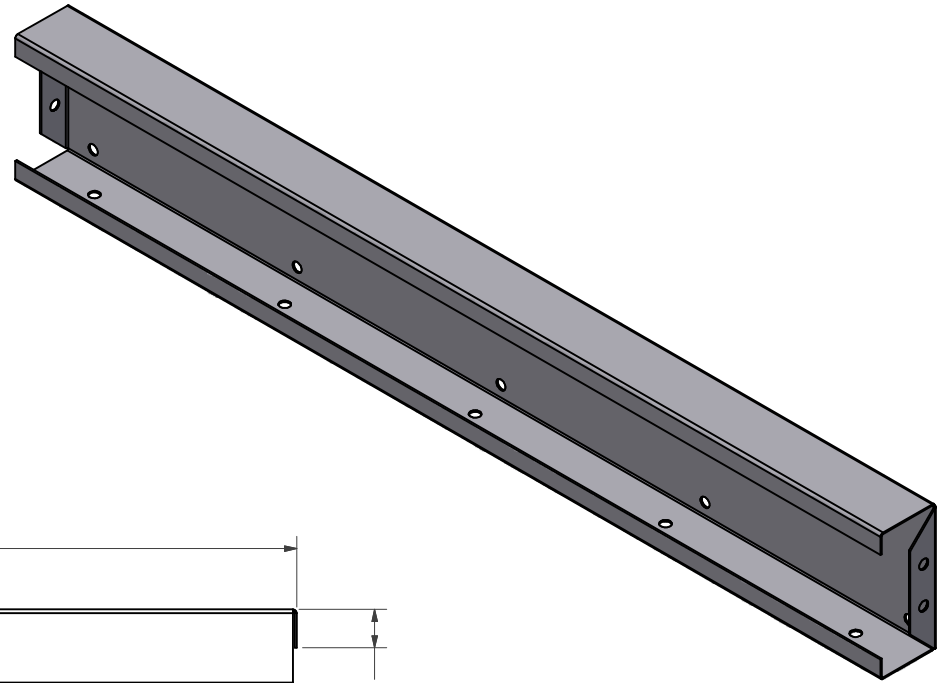
SHEET : 8 OF 23

NOTES:




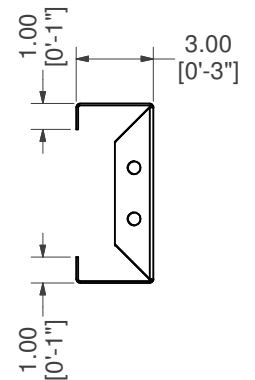
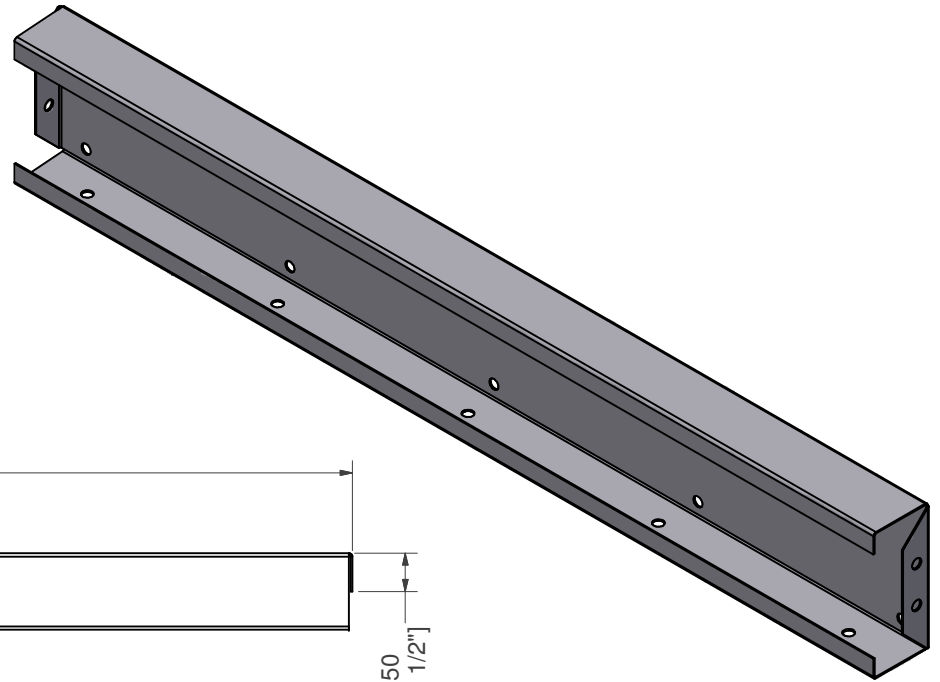
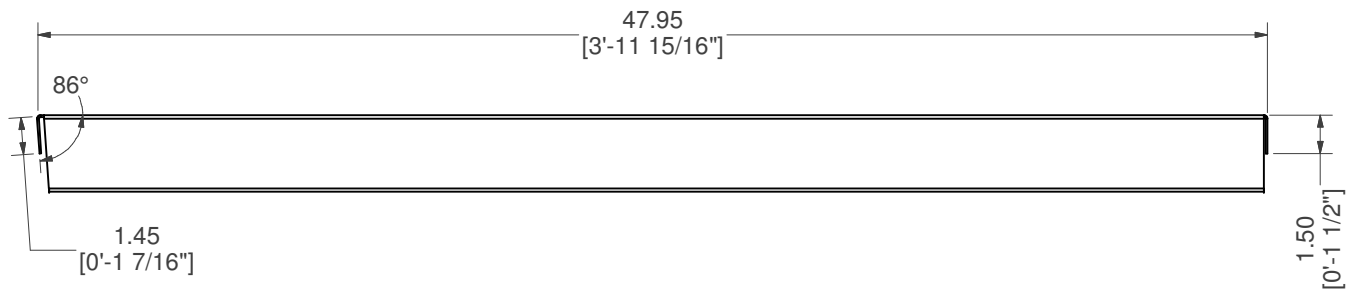
STRAIGHT, BOTTOM RISER

PART #: ESC-17265-BR	WEIGHT: 14.92 lbmass	MACHINE TIME: N/A	FILE/DIRECTORY: C:\Vault\FTW\Design\CUSTOM STEPS\ESC-20000-20999\ESC-20035.idw		
	TOLERANCES EXCEPT AS NOTED 0/0 0.0 0.00 0.000 0" ±1/8 ±0.25 ±0.0625 ±0.03125 ±1/2"	MATERIAL: 14 GA. GALVANIZED	DATE : 3/26/2025		NOTES:
		DRAWN BY: SN	SHEET : 9 OF 23		



STRAIGHT, MIDDLE RISER

PART #: ESC-17265-MR	WEIGHT: 14.38 lbmass	MACHINE TIME: N/A	FILE/DIRECTORY: C:\Vault\FTW\Design\CUSTOM STEPS\ESC-20000-20999\ESC-20035.idw	
	TOLERANCES EXCEPT AS NOTED 0/0 0.0 0.00 0.000 0' ±1/8 ±0.25 ±0.0625 ±0.03125 ±1/2'	MATERIAL: 14 GA. GALVANIZED	DATE : 3/26/2025	NOTES:
		DRAWN BY: SN	SHEET : 10 OF 23	



STRAIGHT, TOP MIDDLE, RISER

PART #: ESC-20035-TMR

WEIGHT:
14.34 lbmass

MACHINE TIME:
N/A

FILE/DIRECTORY:

C:\Vault\FTW\Design\CUSTOM STEPS\ESC-20000-20999\ESC-20035.idw

latham
The Pool Company

TOLERANCES EXCEPT
AS NOTED

0/0 0.0 0.00 0.000 0'
±1/8 ±0.25 ±0.0625 ±0.03125 ±1/2'

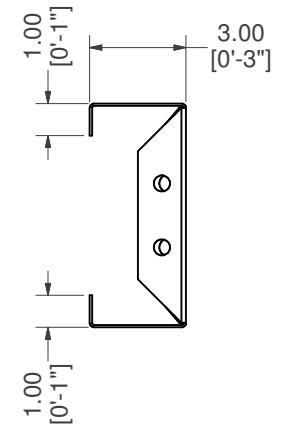
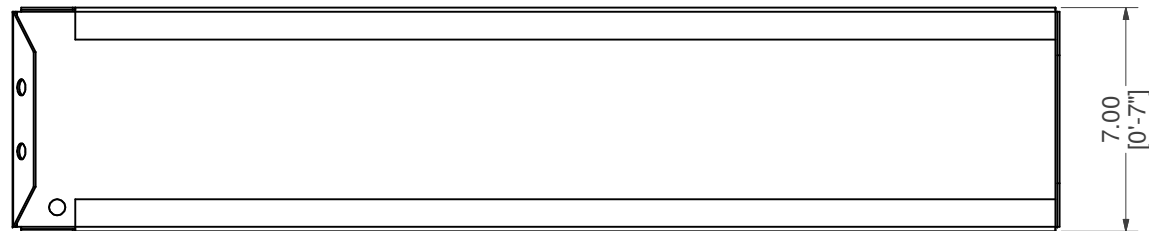
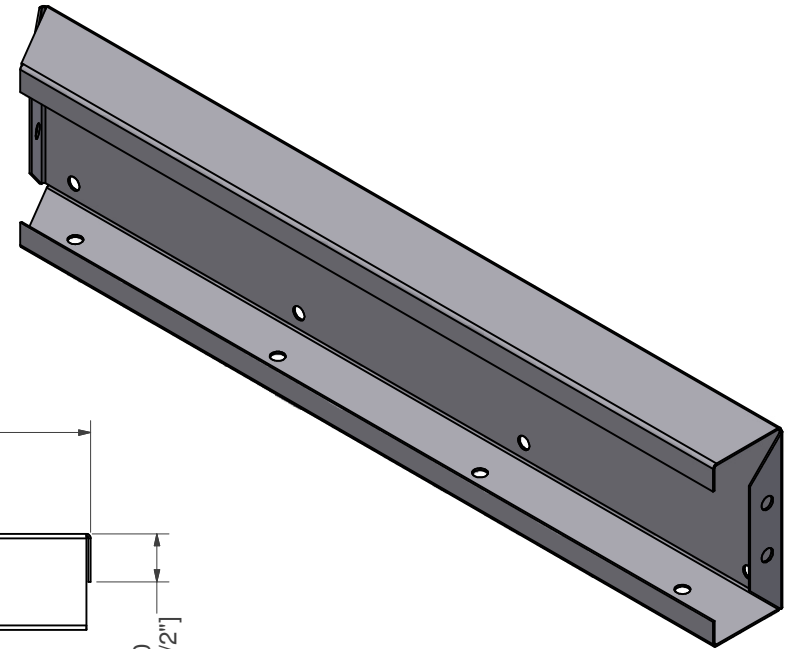
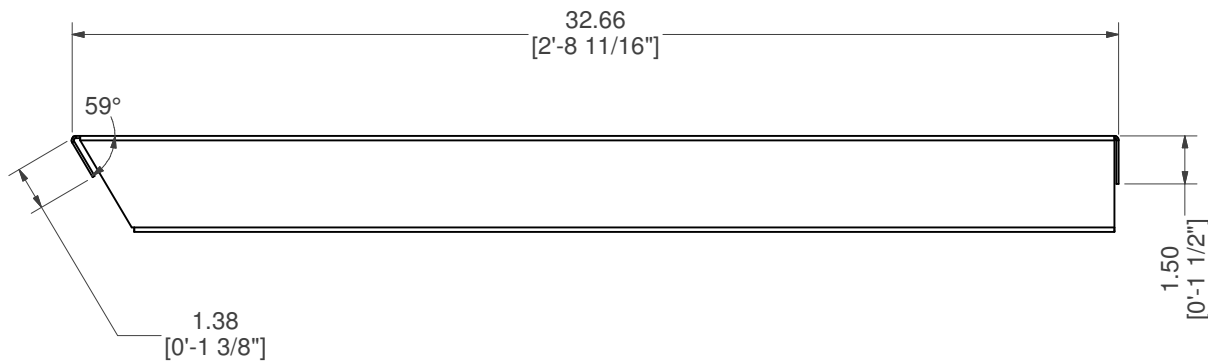
MATERIAL:
14 GA. GALVANIZED

DRAWN BY:
SN

DATE : 3/26/2025

SHEET : 11 OF 23

NOTES:



STRAIGHT, TOP RISER

PART #: ESC-20035-TR

WEIGHT:
9.68 lbmass

MACHINE TIME:
N/A

FILE/DIRECTORY:

C:\Vault\FTW\Design\CUSTOM STEPS\ESC-20000-20999\ESC-20035.idw

latham
The Pool Company

TOLERANCES EXCEPT
AS NOTED
0/0 0.0 0.00 0.000 0'
±1/8 ±0.25 ±0.0625 ±0.03125 ±1/2'

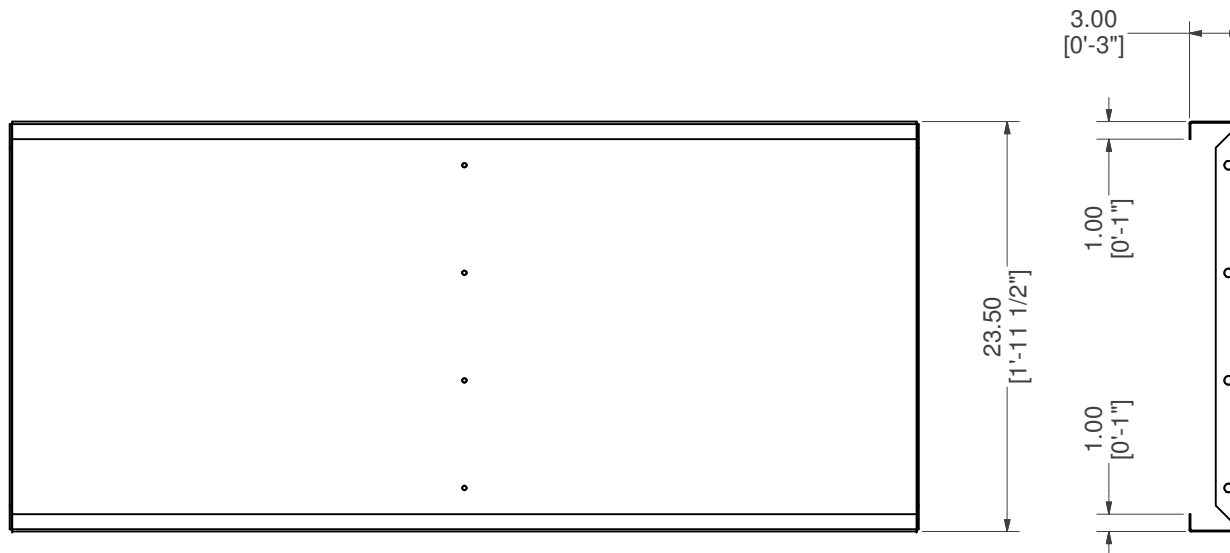
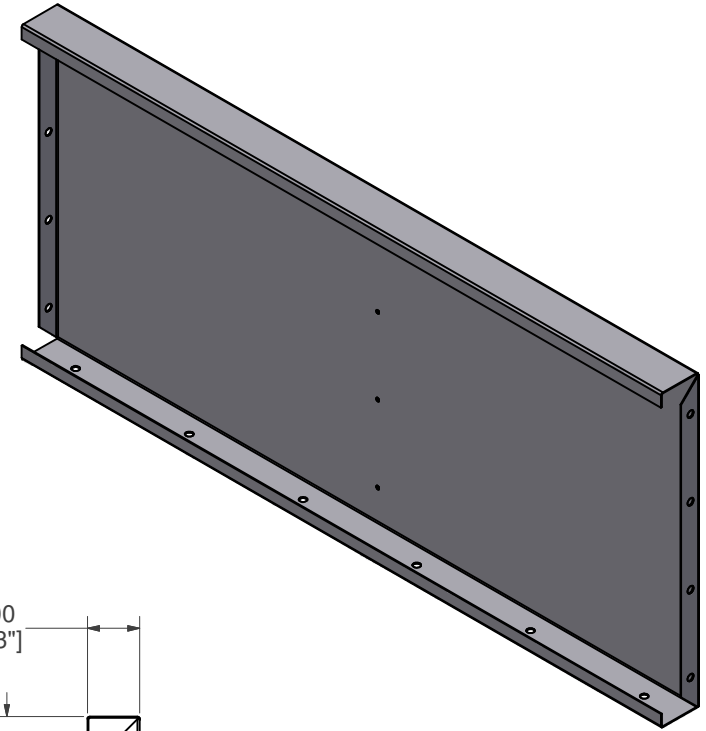
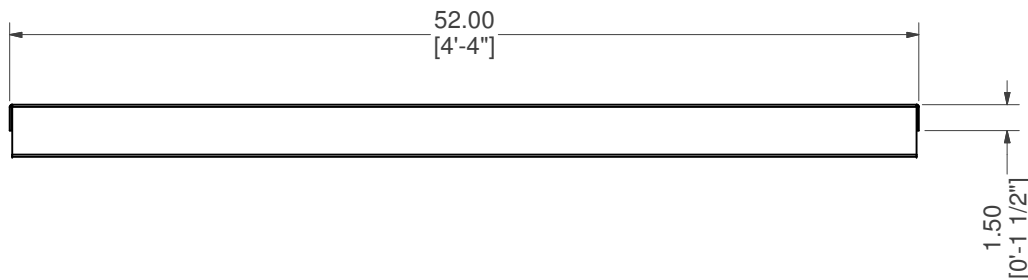
MATERIAL:
14 GA. GALVANIZED

DRAWN BY:
SN


DATE : 3/26/2025

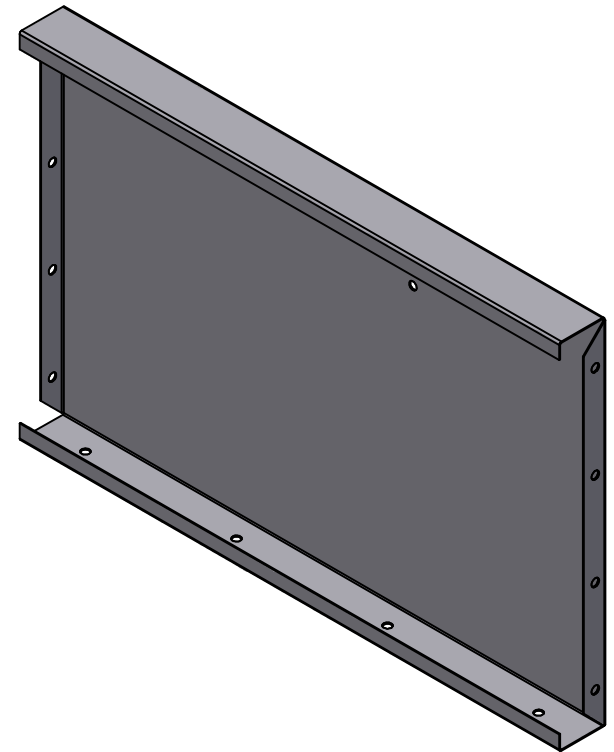
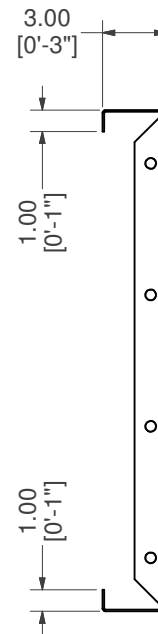
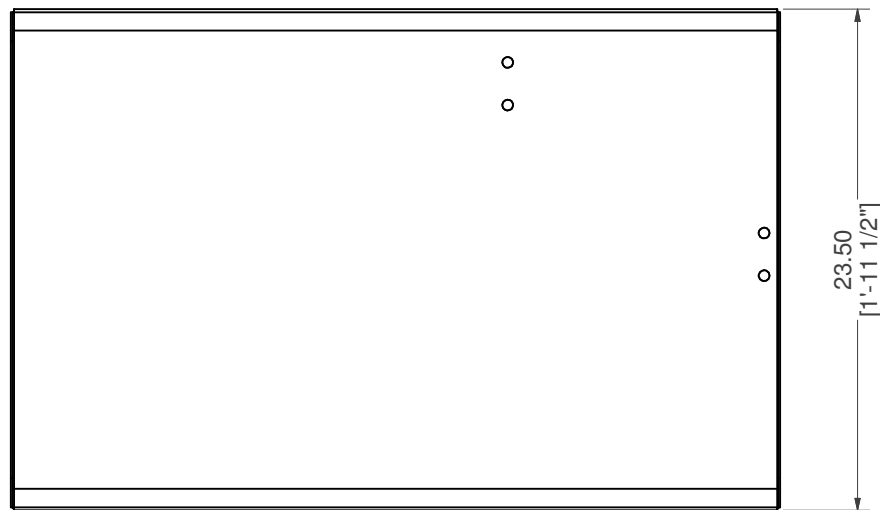
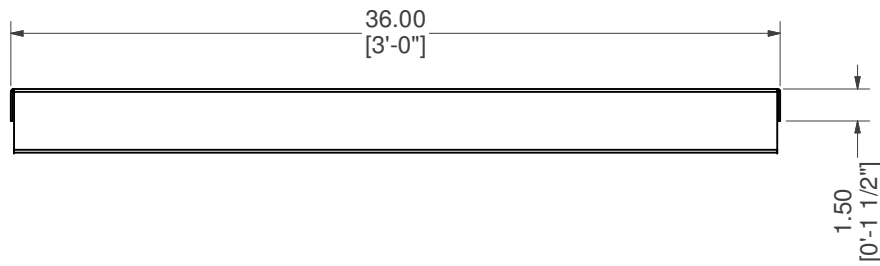
SHEET : 12 **OF** 23

NOTES:




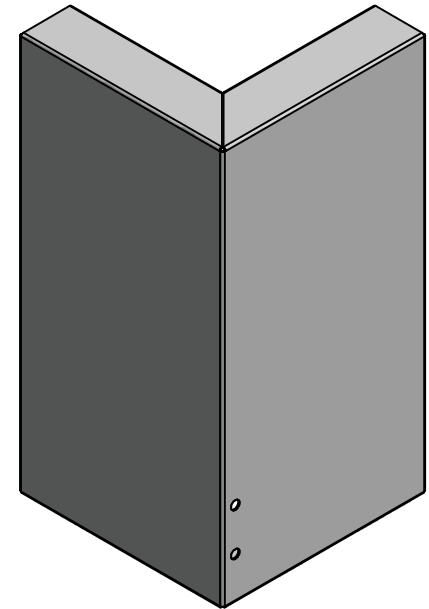
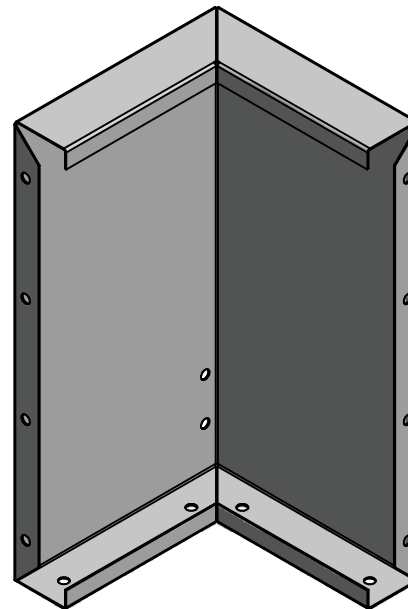
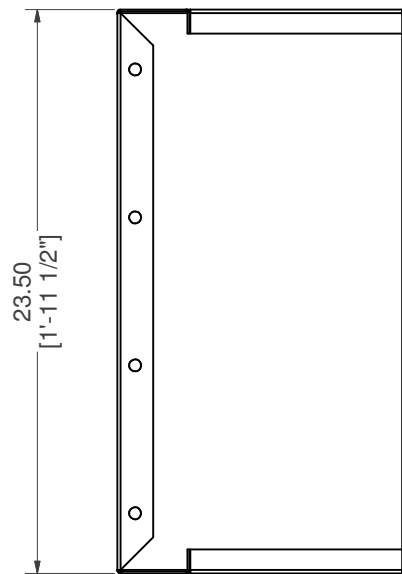
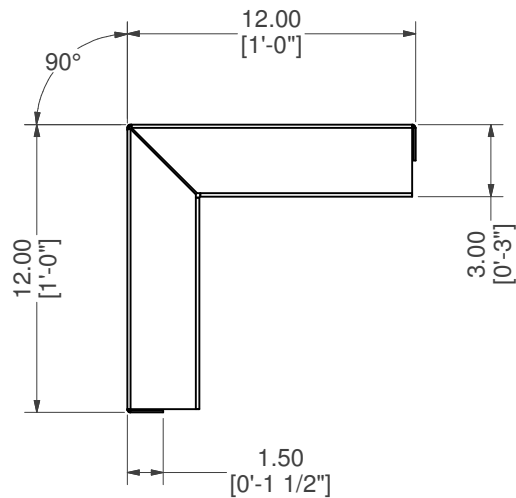
STRAIGHT, SUNLEDGE RISER

PART #: ESC-20035-SR	WEIGHT: 33.92 lbmass	MACHINE TIME: N/A	FILE/DIRECTORY: C:\Vault\FTW\Design\CUSTOM STEPS\ESC-20000-20999\ESC-20035.idw		
	TOLERANCES EXCEPT AS NOTED 0/0 0.0 0.00 0.000 0" ±1/8 ±0.25 ±0.0625 ±0.03125 ±1/2"	MATERIAL: 14 GA. GALVANIZED		DATE : 3/26/2025	NOTES:
		DRAWN BY: SN		SHEET : 13 OF 23	




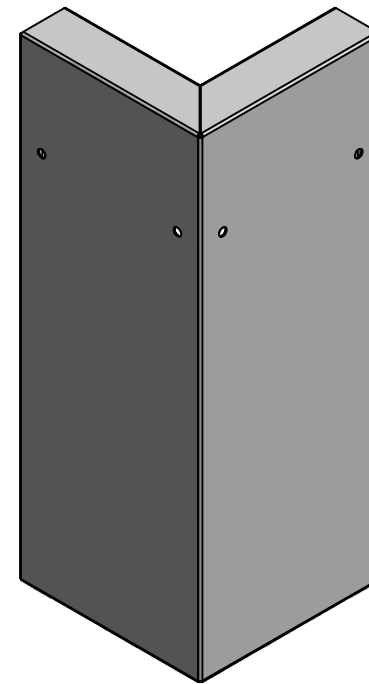
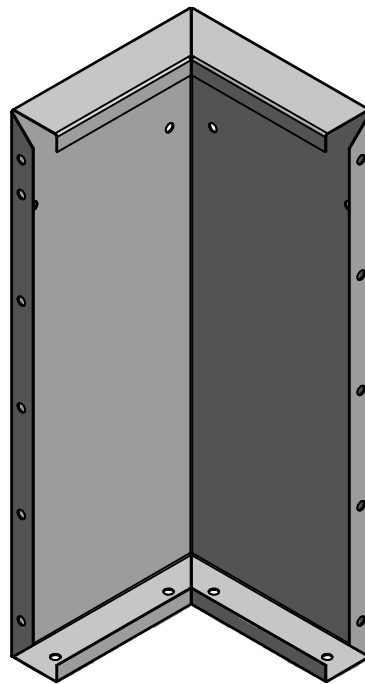
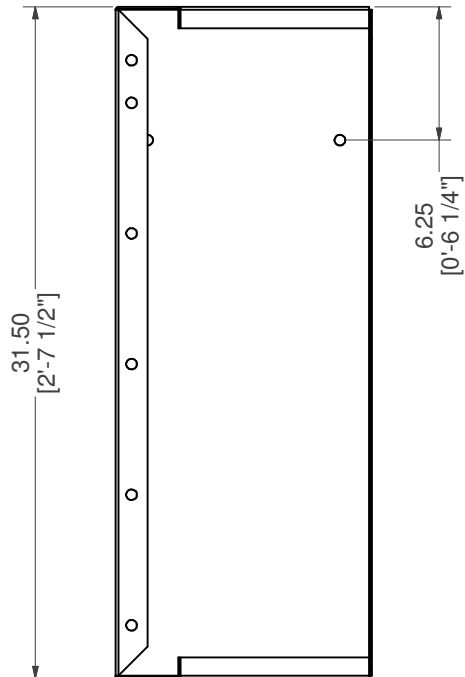
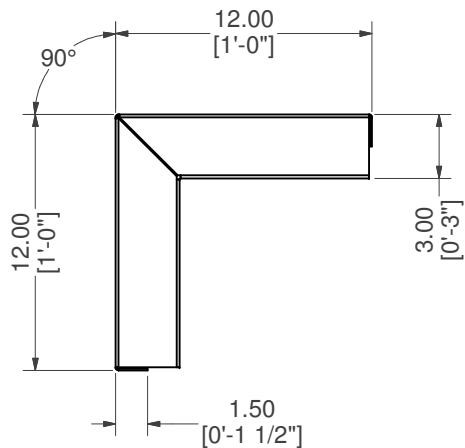
STRAIGHT, SUNLEDGE RISER, BACK

PART #: ESC-20035-SRB	WEIGHT: 23.83 lbmass	MACHINE TIME: N/A	FILE/DIRECTORY: C:\Vault\FTW\Design\CUSTOM STEPS\ESC-20000-20999\ESC-20035.idw	
	TOLERANCES EXCEPT AS NOTED 0/0 0.0 0.00 0.000 0' ±1/8 ±0.25 ±0.0625 ±0.03125 ±1/2'	MATERIAL: 14 GA. GALVANIZED	DATE : 3/26/2025	NOTES:
		DRAWN BY: SN	SHEET : 14 OF 23	



STR REV, SUNLEDGE RISER

PART #: ESC-20035-SRSR	WEIGHT: 15.61 lbmass	MACHINE TIME: N/A	FILE/DIRECTORY: C:\Vault\FTW\Design\CUSTOM STEPS\ESC-20000-20999\ESC-20035.idw	
	TOLERANCES EXCEPT AS NOTED 0/0 0.0 0.00 0.000 0' ±1/8 ±0.25 ±0.0625 ±0.03125 ±1/2'	MATERIAL: 14 GA. GALVANIZED	DATE : 3/26/2025	NOTES:
		DRAWN BY: SN	SHEET : 15 OF 23	



STR REV, TOP RISER

PART #: ESC-20035-SRTR

WEIGHT:
19.93 lbmass

MACHINE TIME:
N/A

FILE/DIRECTORY:

C:\Vault\FTW\Design\CUSTOM STEPS\ESC-20000-20999\ESC-20035.idw

latham
The Pool Company

TOLERANCES EXCEPT
AS NOTED

0/0 0.0 0.00 0.000 0'
±1/8 ±0.25 ±0.0625 ±0.03125 ±1/2'

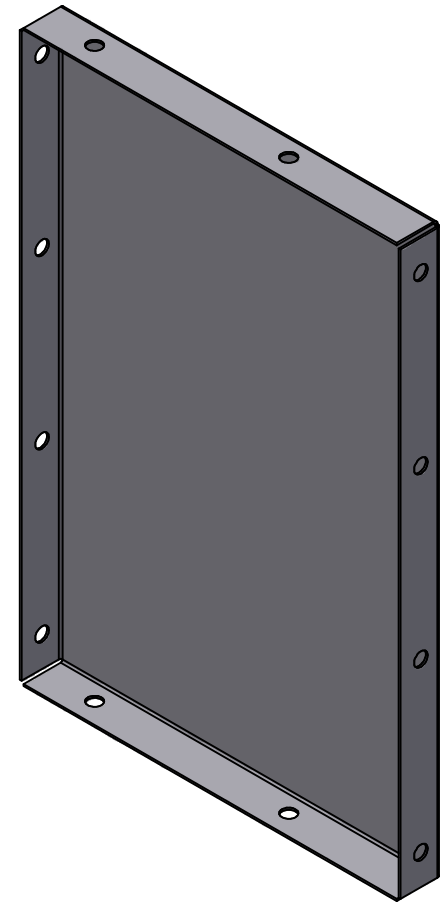
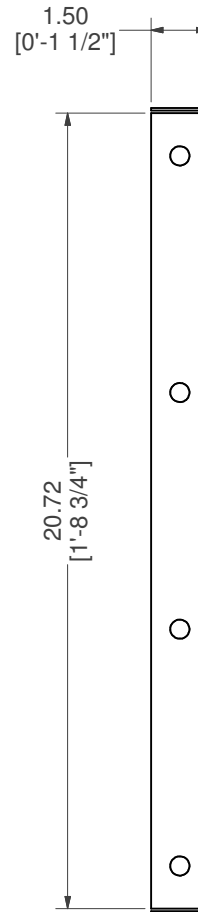
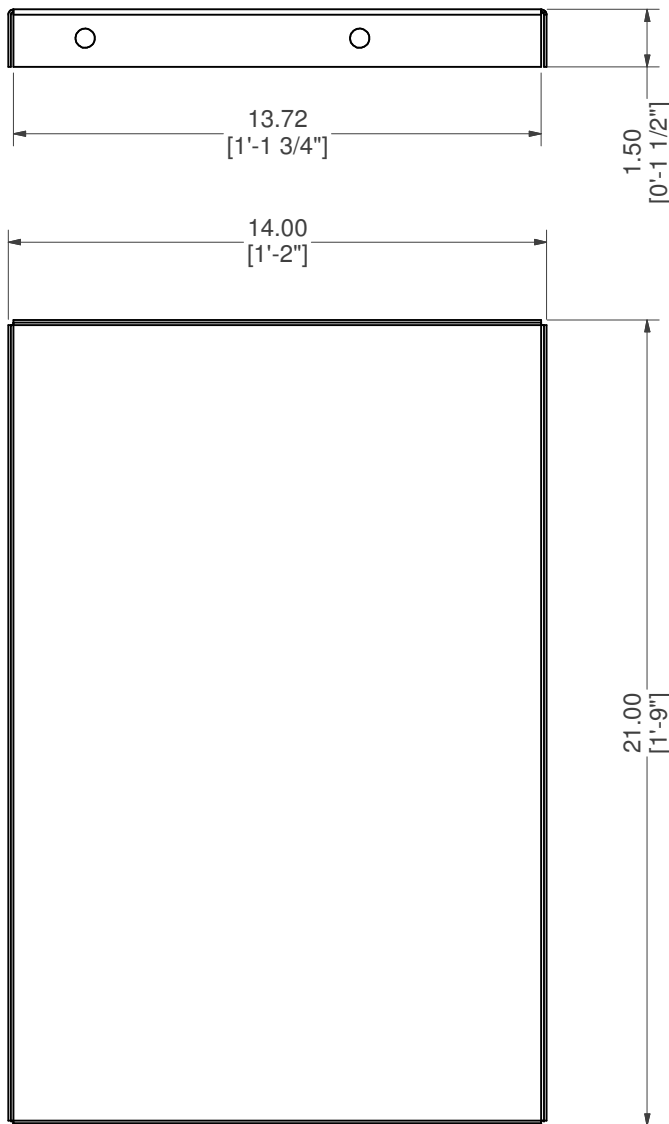
MATERIAL:
14 GA. GALVANIZED

DRAWN BY:
SN


DATE : 3/26/2025

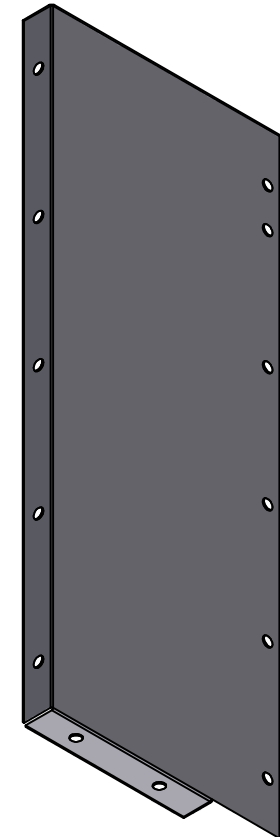
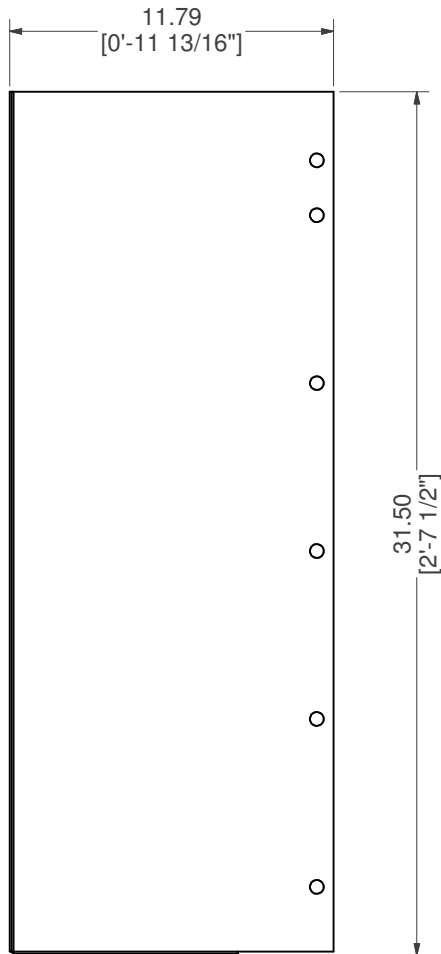
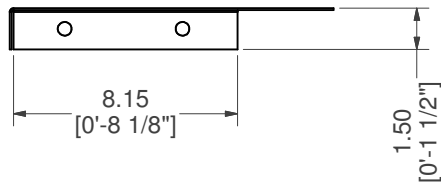
SHEET : 16 OF 23

NOTES:




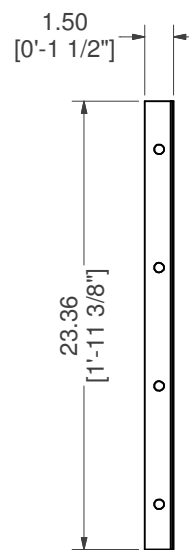
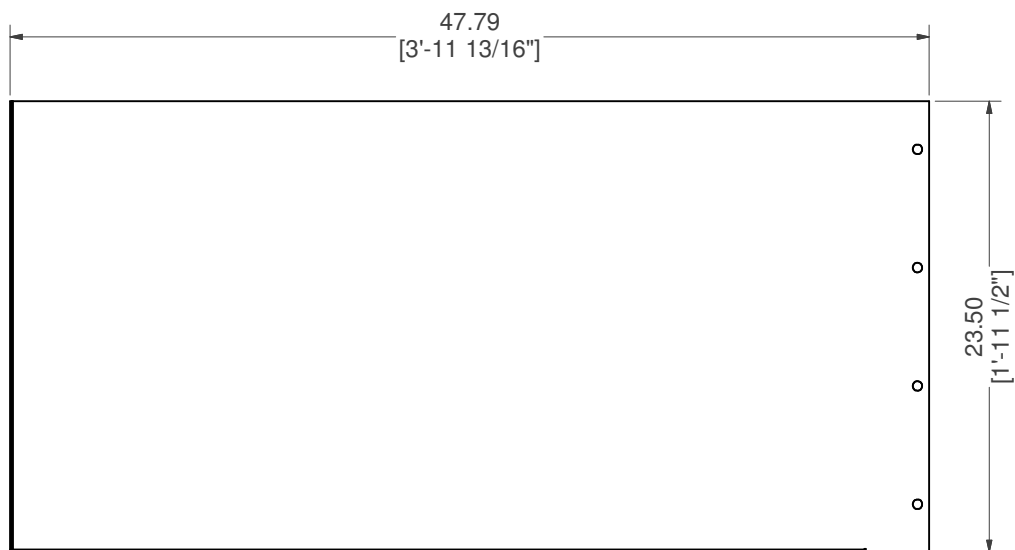
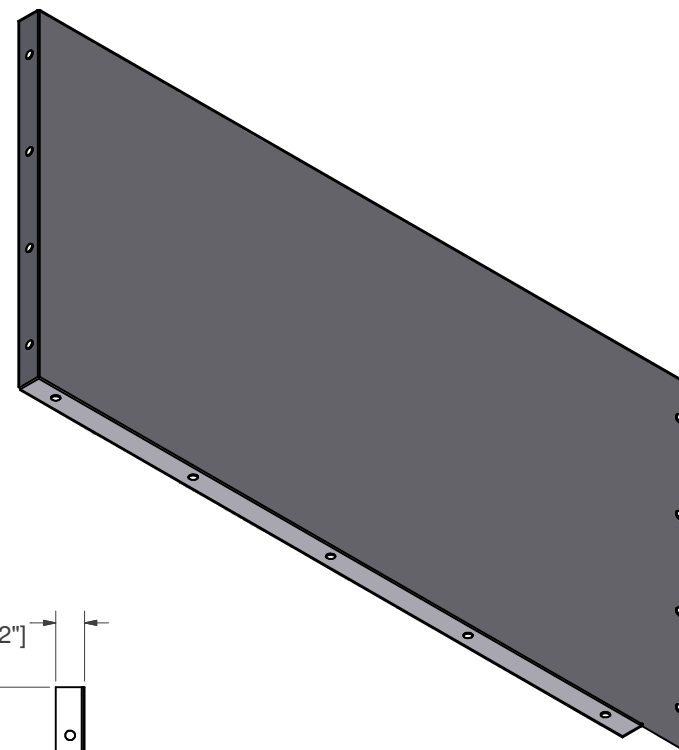
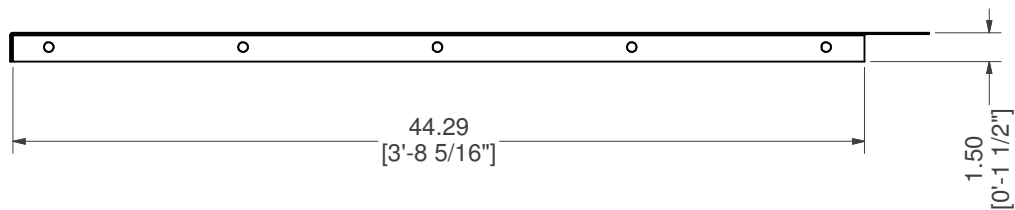
BRACE, SUNLEDGE RISER MIDDLE SUPPORT

PART #: ESC-7777-SRMS	WEIGHT: 7.86 lbmass	MACHINE TIME: N/A	FILE/DIRECTORY: C:\Vault\FTW\Design\CUSTOM STEPS\ESC-20000-20999\ESC-20035.idw	
	TOLERANCES EXCEPT AS NOTED 0/0 0.0 0.00 0.000 0' ±1/8 ±0.25 ±0.0625 ±0.03125 ±1/2'	MATERIAL: 14 GA. GALVANIZED	DATE : 3/26/2025	NOTES:
		DRAWN BY: SN	SHEET : 17 OF 23	




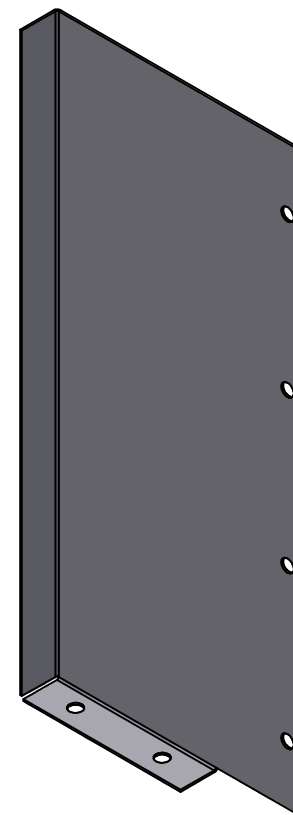
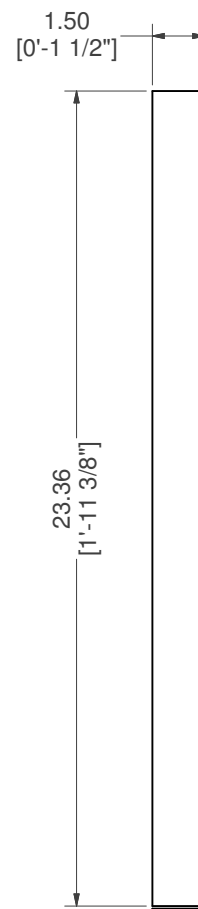
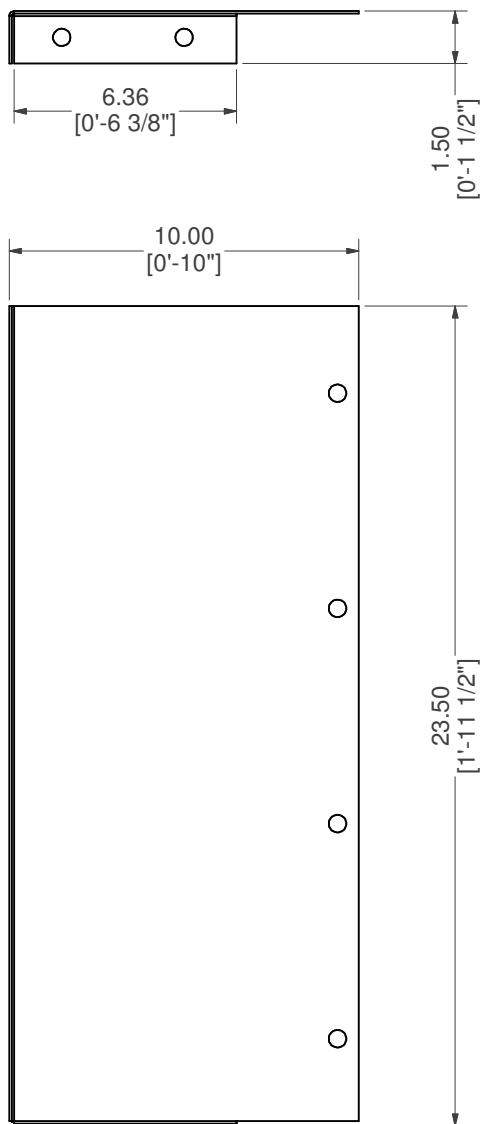
BRACE, TOP RISER SUPPORT

PART #: ESC-20035-TRS	WEIGHT: 8.60 lbmass	MACHINE TIME: N/A	FILE/DIRECTORY: C:\Vault\FTW\Design\CUSTOM STEPS\ESC-20000-20999\ESC-20035.idw		
	TOLERANCES EXCEPT AS NOTED 0/0 0.0 0.00 0.000 0" ±1/8 ±0.25 ±0.0625 ±0.03125 ±1/2'	MATERIAL: 14 GA. GALVANIZED		DATE : 3/26/2025	NOTES:
		DRAWN BY: SN		SHEET : 18 OF 23	




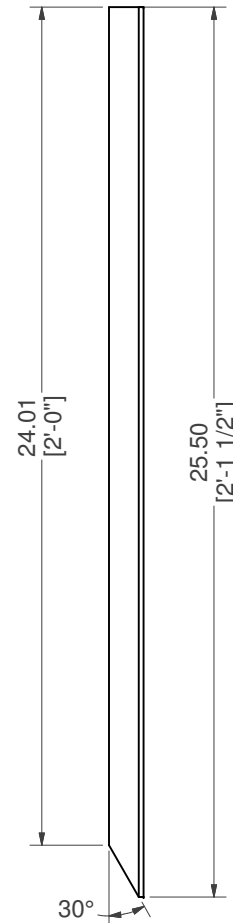
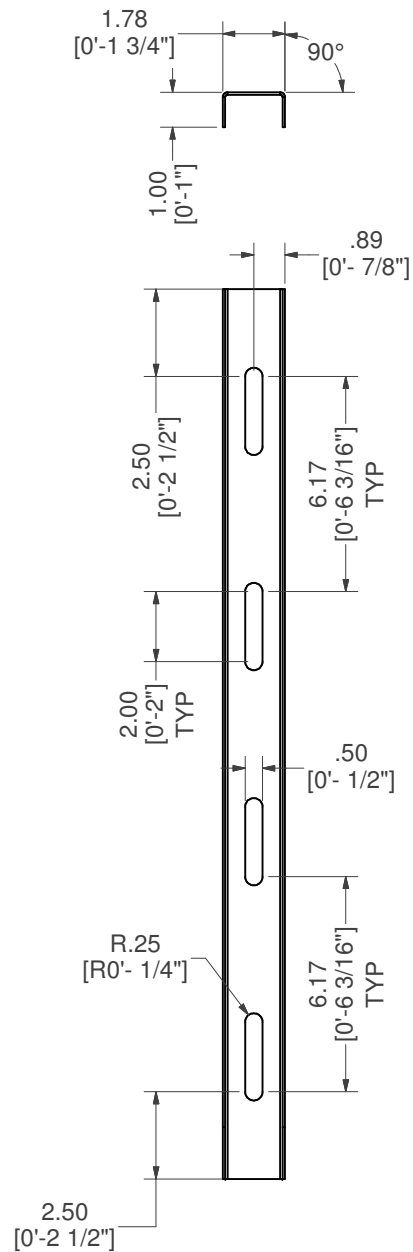
BRACE, SUNLEDGE RISER SUPPORT

PART #: ESC-20035-SRS	WEIGHT: 24.67 lbmass	MACHINE TIME: N/A	FILE/DIRECTORY: C:\Vault\FTW\Design\CUSTOM STEPS\ESC-20000-20999\ESC-20035.idw	
	TOLERANCES EXCEPT AS NOTED 0/0 0.0 0.00 0.000 0' ±1/8 ±0.25 ±0.0625 ±0.03125 ±1/2'	MATERIAL: 14 GA. GALVANIZED	DATE : 3/26/2025	NOTES:
		DRAWN BY: SN	SHEET : 19 OF 23	




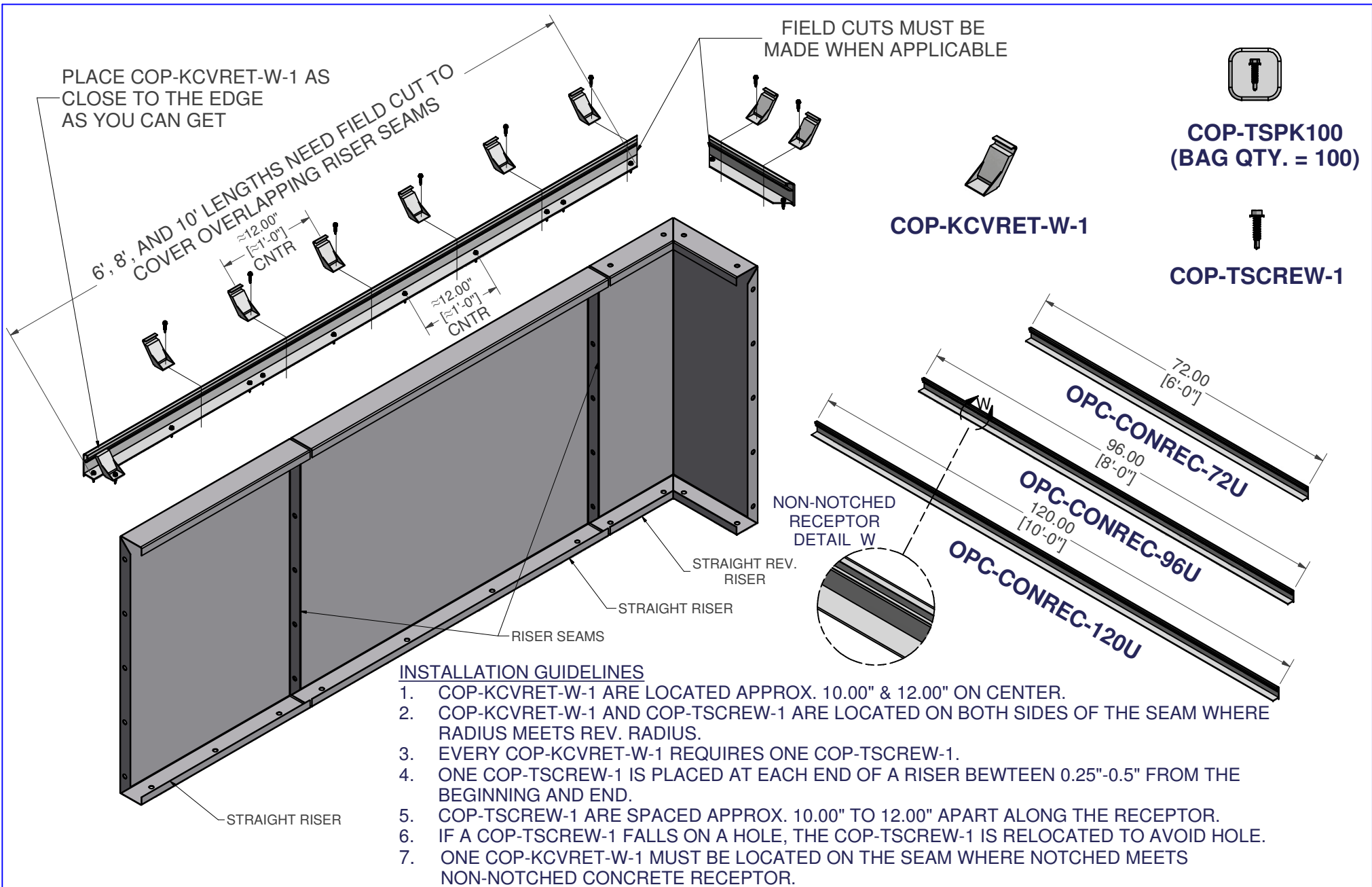
BRACE, SUNLEDGE RISER SUPPORT

PART #: ESC-9895-SRS	WEIGHT: 5.58 lbmass	MACHINE TIME: N/A	FILE/DIRECTORY: C:\Vault\FTW\Design\CUSTOM STEPS\ESC-20000-20999\ESC-20035.idw	
	TOLERANCES EXCEPT AS NOTED 0/0 0.0 0.00 0.000 0' ±1/8 ±0.25 ±0.0625 ±0.03125 ±1/2'	MATERIAL: 14 GA. GALVANIZED	DATE : 3/26/2025	NOTES:
		DRAWN BY: SN	SHEET : 20 OF 23	




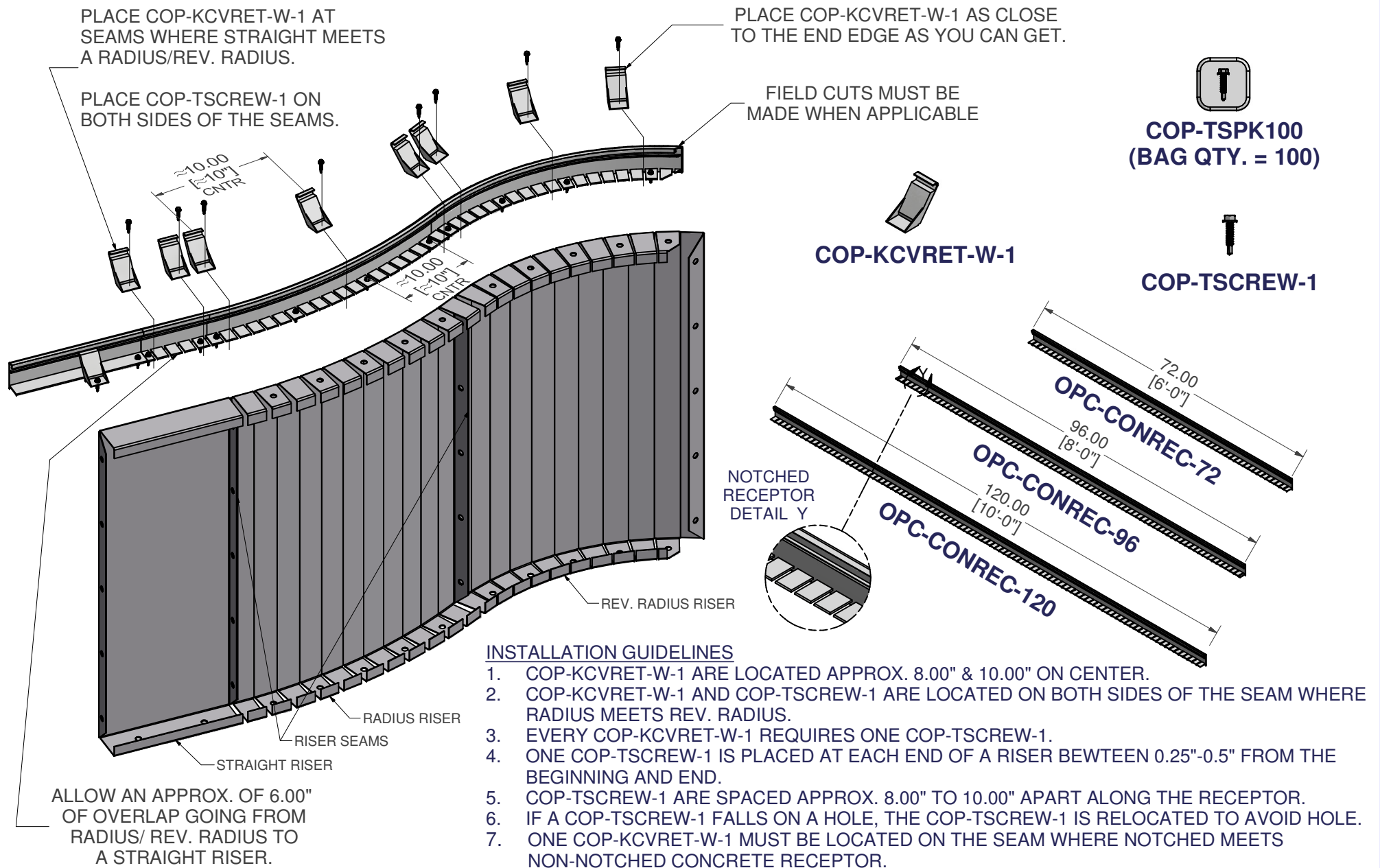
BRACE, DRIVE STAKE CHANNEL SET

PART #: ESC-9378-DS	WEIGHT: 1.72 lbmass	MACHINE TIME: N/A	FILE/DIRECTORY: C:\Vault\FTW\Design\CUSTOM STEPS\ESC-20000-20999\ESC-20035.idw	
	TOLERANCES EXCEPT AS NOTED 0/0 0.0 0.00 0.000 0' ±1/8 ±0.25 ±0.0625 ±0.03125 ±1/2'	MATERIAL: 14 GA. GALVANIZED	DATE : 3/26/2025	NOTES:
		DRAWN BY: SN	SHEET : 21 OF 23	



NON-NOTCHED CONCRETE RECEPTOR FIELD INSTALLATION

PART # STRAIGHT CONCRETE RECEPTOR 	WEIGHT: 77.51 lbmass TOLERANCES EXCEPT AS NOTED 0/0 0.0 0.00 0.000 0' ±1/8 ±0.25 ±0.0625 ±0.03125 ±1/2"	MACHINE TIME: N/A MATERIAL: DRAWN BY: SN	FILE/DIRECTORY: C:\Vault\FTW\Design\CUSTOM STEPS\ESC-20000-20999\ESC-20035.idw DATE : 3/26/2025 SHEET : 22 OF 23 NOTES:
--	---	--	--



NOTCHED CONCRETE RECEPTOR FIELD INSTALLATION

REV-RADIUS CONCRETE RECEPTOR

WEIGHT:
52.49 lbmass

MACHINE TIME:
N/A

FILE/DIRECTORY:

C:\Vault\FTW\Design\CUSTOM STEPS\ESC-20000-20999\ESC-20035.idw

latham
The Pool Company

TOLERANCES EXCEPT AS NOTED
0/0 0.0 0.00 0.000 0'
±1/8 ±0.25 ±0.0625 ±0.03125 ±1/2"

MATERIAL:

DRAWN BY:

SN

DATE :

3/26/2025

SHEET :

23 **OF** 23

NOTES: