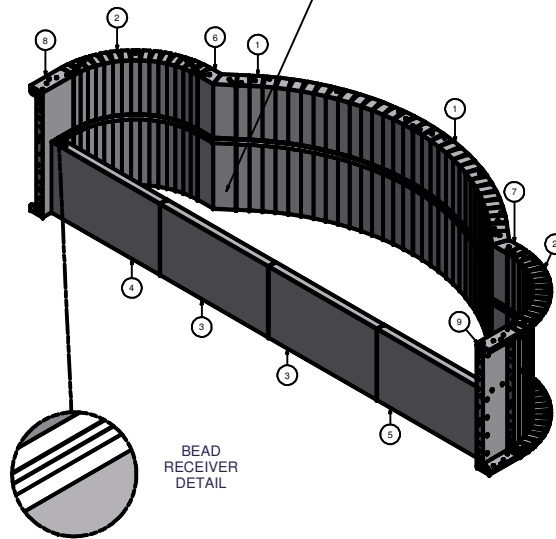
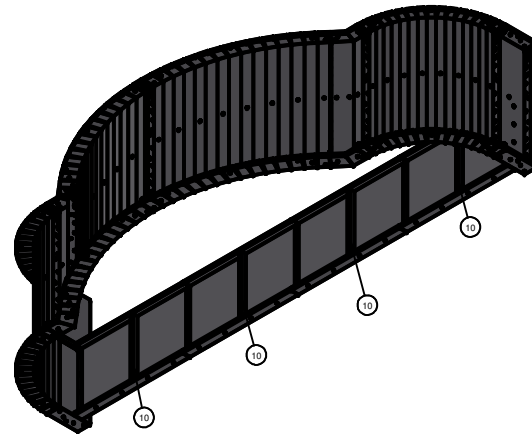


Parts List			
ITEM	QTY	PART NUMBER	DESCRIPTION
1	2	ESC-1301-BW	RADIUS, 6'-0" X 6'-4" X 42" BACK WALL
2	2	ESC-1301-CW	RAD. 2'-0" X 37'-0" X 42" CORNER WALL LEFT
3	2	ESC-1301-FW	STRAIGHT, 42" X 24" FRONT WALL RISER
4	1	ESC-1301-FWL	STRAIGHT, 42" X 24" FRONT WALL RISER LEFT
5	1	ESC-1301-FWR	STRAIGHT, 42" X 24" FRONT WALL RISER RIGHT
6	1	ESC-1301-SHCL	STRAIGHT REV. 6" X 6'-25" X 40" CRN. LEFT
7	1	ESC-1301-SHCR	STRAIGHT REV. 6" X 6'-25" X 40" CRN. RIGHT
8	1	ESC-1301-SWL	STRAIGHT, 12" X 42" SIDE WALL LEFT
9	1	ESC-1301-SWR	STRAIGHT, 12" X 42" SIDE WALL RIGHT
10	4	ESC-808-SDZ	23.625" X 3" RISER Z-RIB
11	-	SSC-1099	BEAD RECEIVER, 19" REQUIRED

KEEP BEAD RECEIVER ATTACHED TO THE STEP TREADS & WALL PANELS FOR SHIPPING. A TOTAL OF 228" (19') OF BEAD RECEIVER IS REQUIRED.

PLEASE READ
CONTRACTOR NOTE
FOR THIS AREA



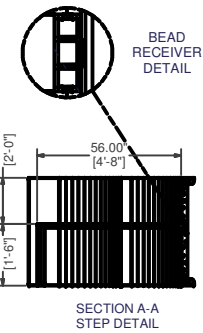
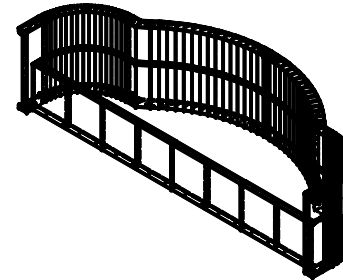
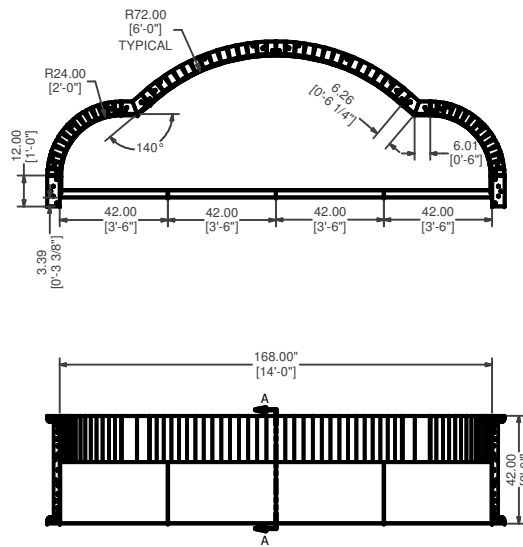
BEAD
RECEIVER
DETAIL

CONTRACTOR NOTE:
BACK FILL SUN DECK AREA WITH COMPACTED EARTH MATERIAL. FINISH SUN DECK AREA WITH 2" OF HARDEN FLOOR MATERIAL TO MATCH 18" DEPTH OF FRONT RISER.

14' X 4'-11 1/2 X 6'-0' RADIUS ROMAN STEP OPEN TOP

PART #: ESC-1301	WEIGHT: 402.60 lbmass	MACHINE TIME: N/A	FILE/DIRECTORY: P:\2013 SS\ESC-1301.idw
LATHAM INTERNATIONAL	TOLERANCES EXCEPT AS NOTED	MATERIAL:	DATE: 10/22/2013
	0.00 0.00 0.00 0.000 0"	DRAWN BY: BW	NOTES:
	1/16 10.25 10.0025 10.0125 1/12"	SHEET: 1 OF 8	

NOTE:
LEFT SIDE AND RIGHT SIDE STEP
PARTS ARE SYMMETRICAL.



14' X 4'-11 1/2 X 6'-0' RADIUS ROMAN STEP OPEN TOP

PART #:	ESC-1301	WEIGHT:	402.60 lbmass	MACHINE TIME:	N/A	FILE/DIRECTORY:	P:\2013 SS\ESC-1301.idw
LATHAM INTERNATIONAL		TOLERANCES EXCEPT AS NOTED	0.00 0.00 0.00 0.000 0"	MATERIAL:		DATE :	10/22/2013
		±10 ±0.25 ±0.0625 ±0.03125 ±12		DRAWN BY:	BW	SHEET :	2 OF 8
		NOTES:					