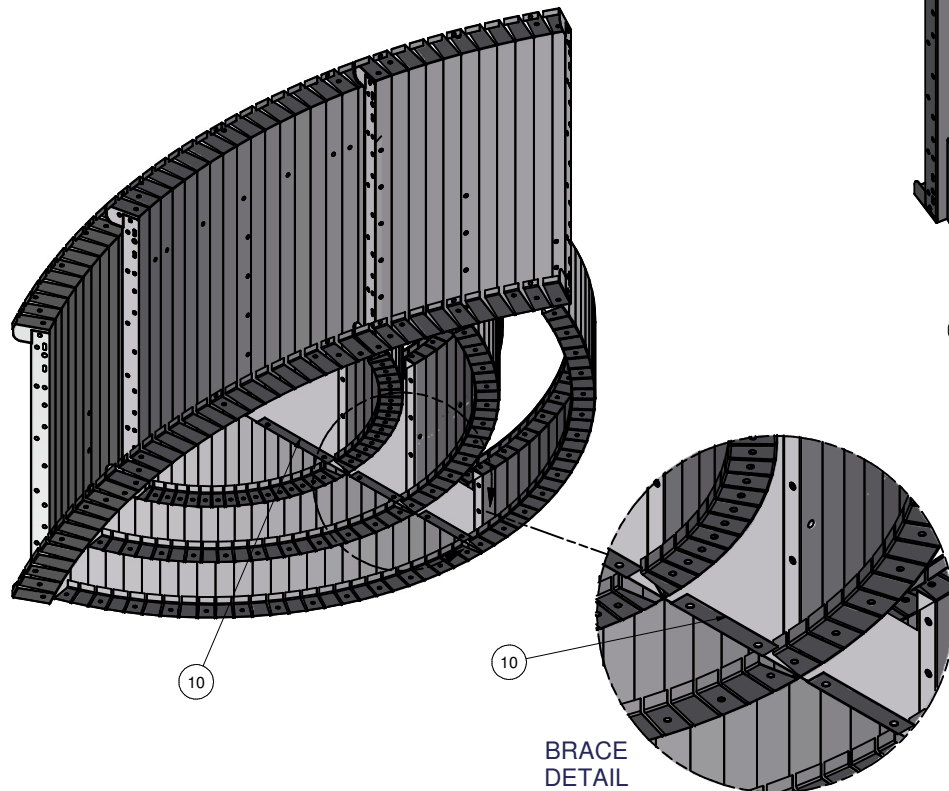


Parts List			
ITEM	QTY	PART NUMBER	DESCRIPTION
1	2	ESC-1321-BR	REV. RAD, 4'-0" X 11.9" BOTTOM RISER
2	2	ESC-1321-BRT	FLAT, 54.30" X 3" BOTTOM RISER COVER
3	2	ESC-1321-MR	REV. RAD, 3'-0" X 22.9" MIDDLE RISER
4	2	ESC-1321-MRT	FLAT, 41.27" X 3" MIDDLE RISER COVER
5	1	ESC-1321-RIS	RADIUS, 8'-0" X 42" X 42" RISER
6	1	ESC-1321-SWL	RADIUS, 8'-0" X 27" X 42" SIDE WALL, LEFT
7	1	ESC-1321-SWR	RADIUS, 8'-0" X 27" X 42" SIDE WALL, RIGHT
8	2	ESC-1321-TR	REV. RAD, 2'-0" X 33.9" TOP RISER
9	2	ESC-1321-TRT	FLAT, 27" X 3" TOP RISER COVER
10	1	ESC-850-RSB	BRACE, 42" X 34" RISER SUPPORT
11	-	SSC-1099	BEAD RECEIVER, 16' REQUIRED

KEEP BEAD RECEIVER ATTACHED TO THE STEP RISERS & WALL FOR SHIPPING. A TOTAL OF 187" (16') OF BEAD RECEIVER REQUIRED.

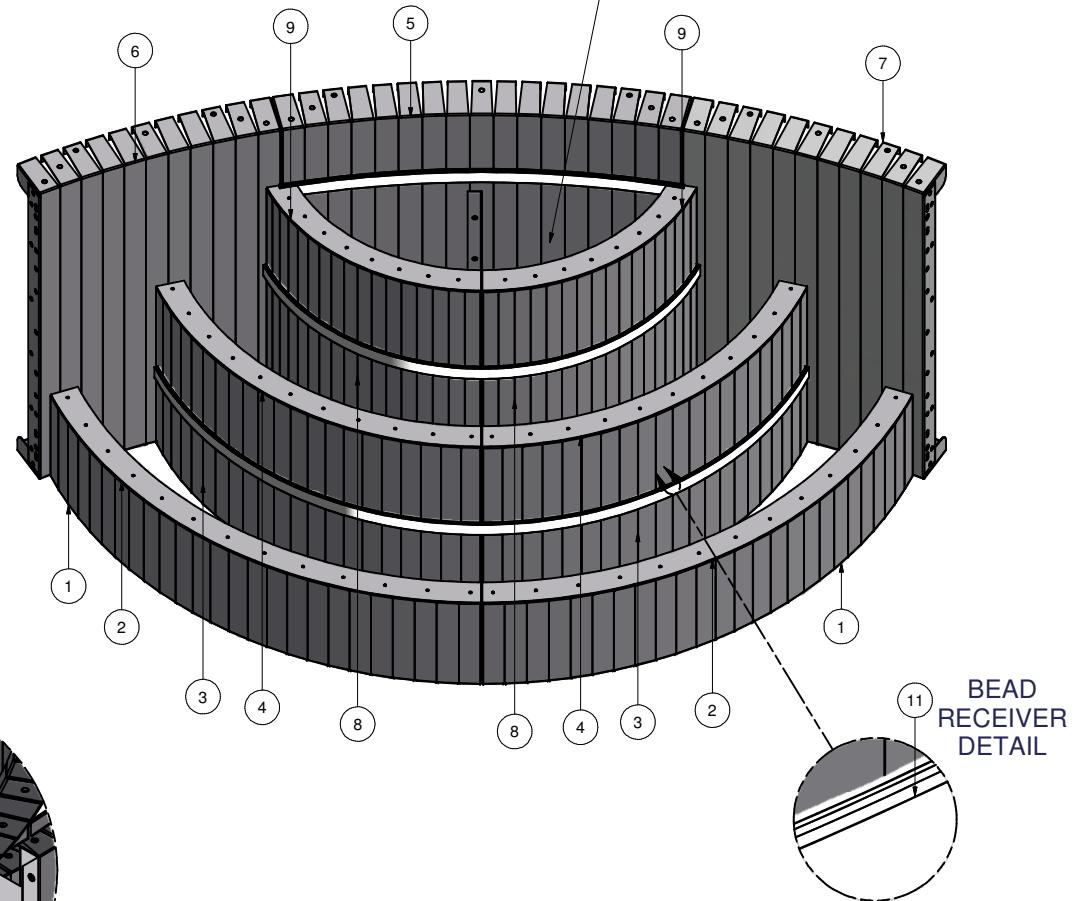
APPLY EDGE TREAD TREATMENT TO ALL EXPOSED TREAD PLATE EDGES. A TOTAL OF 255" (22') IS REQUIRED.



CONTRACTOR NOTE:
BACK FILL STEP AREA WITH COMPACTED EARTH MATERIAL. FINISH STEP AREA WITH 2" OF HARDEN FLOOR MATERIAL TO MATCH REQUIRED DEPTH (FLUSH WITH TOP OF BEAD RECEIVERS).

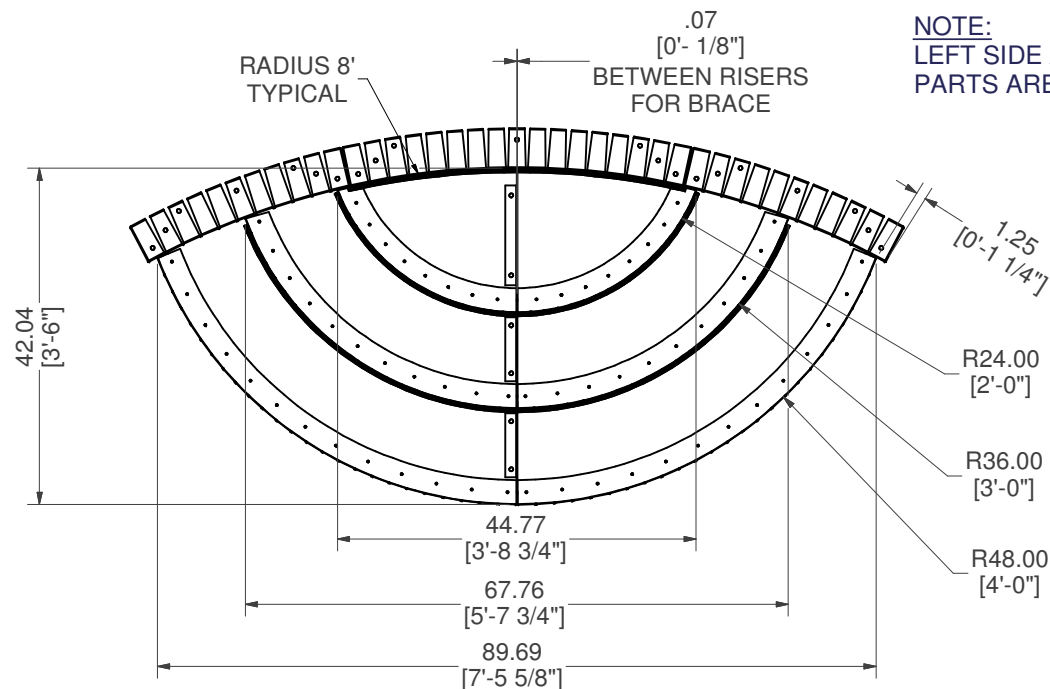
NOTE:
LEFT SIDE AND RIGHT SIDE STEP PARTS ARE SYMMETRICAL.

PLEASE REFER TO:
CONTRACTOR NOTE

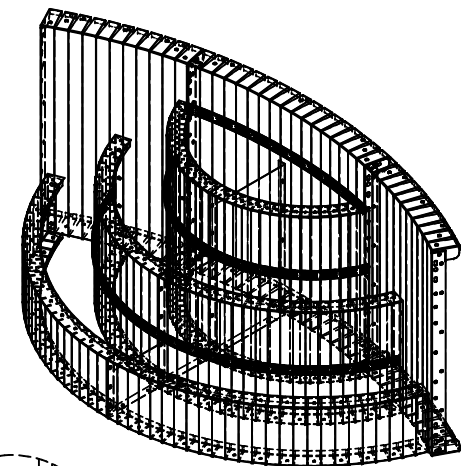


8' RADIUS WEDDING CAKE BACK-FILL STEP

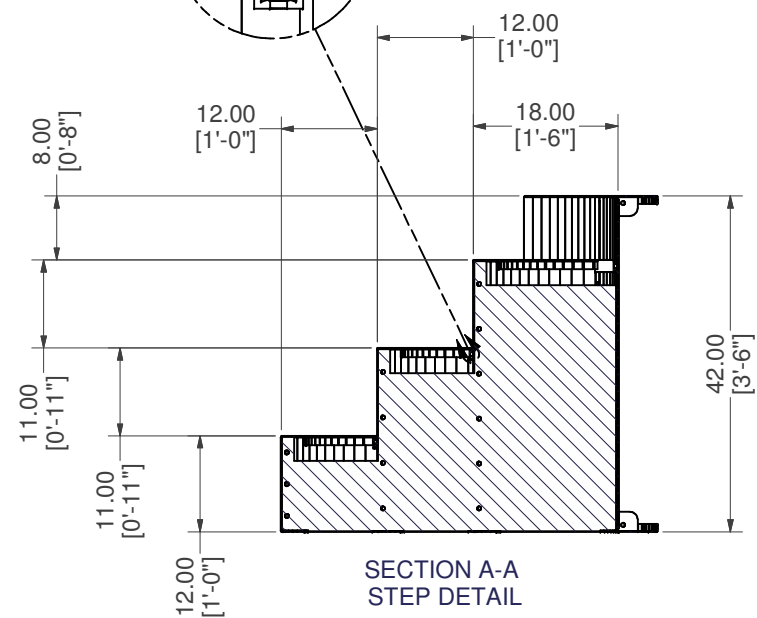
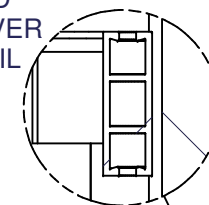
PART #: ESC-1321		WEIGHT: 282.44 lbmass	MACHINE TIME: N/A	FILE/DIRECTORY: P:\2013 SS\ESC-1321.idw
LATHAM INTERNATIONAL		TOLERANCES EXCEPT AS NOTED		DATE : 11/14/2013
		0/0 0.0 0.00 0.000 0'		NOTES:
		±1/8 ±0.25 ±0.0625 ±0.03125 ±1/2'		SHEET : 1 OF 11
		DRAWN BY: BW		



NOTE:
LEFT SIDE AND RIGHT SIDE STEP
PARTS ARE SYMMETRICAL.



BEAD
RECEIVER
DETAIL



8' RADIUS WEDDING CAKE BACK-FILL STEP

PART #: ESC-1321

WEIGHT:
282.44 lbmass

MACHINE TIME:
N/A

FILE/DIRECTORY:

P:\2013 SS\ESC-1321.idw

TOLERANCES EXCEPT
AS NOTED

MATERIAL:

DATE : 11/14/2013

NOTES:

0/0 0.0 0.00 0.000 0'
±1/8 ±0.25 ±0.0625 ±0.03125 ±1/2'

DRAWN BY: BW

SHEET : 2 OF 11

LATHAM
INTERNATIONAL