

Parts List				
ITEM	QTY	PART NUMBER	DESCRIPTION	
1	1	ESC-1326-BNB	24" X 17" RISER BRACE, RIGHT	
2	1	ESC-1326-BNCR	2" REV. RAD X 23" BENCH CONER RISER	
3	1	ESC-1326-BNR	STRAIGHT, 16.71" X 23" BENCH RISER, RIGHT	
4	1	ESC-1326-BNT	FLAT, 48.15" X 3" MIDDLE RISER COVER	
5	1	ESC-1326-BRC	BRACE, 35.86" X 29.86" 3-TRD SUPPORT	
6	1	ESC-1326-BRL	5" REV. RAD. X 12" BOTTOM STEP RISER LEFT	
7	1	ESC-1326-BRR	5" REV. RAD. X 12" BOTTOM STEP RISER LEFT	
8	1	ESC-1326-BTL	FLAT, 45.92" X 3" BOTTOM RISER COVER, LEFT	
9	1	ESC-1326-BTR	FLAT, 28.27" X 3" TOP RISER COVER	
10	1	ESC-1326-BWE	24" X 42" BENCH SIDE WALL, RIGHT	
11	1	ESC-1326-LV	STRAIGHT, 31.5" X 1.5" X 1.5" BENCH TRD LEVELER	
12	1	ESC-1326-LVL	STRAIGHT, 31.75" X 1.5" X 1.5" TOP TRD LEVELER, LEFT	
13	1	ESC-1326-LVR	STRAIGHT, 31.75" X 1.5" X 1.5" TOP TRD LEVELER, RIGHT	
14	1	ESC-1326-MRL	4" REV. RAD. X 22.93" MIDDLE RISER LEFT	
15	1	ESC-1326-MRR	4" REV. RAD. X 22.93" MIDDLE RISER RIGHT	
16	1	ESC-1326-MTL	FLAT, 37.69" X 3" MIDDLE RISER COVER, LEFT	
17	1	ESC-1326-MTR	FLAT, 37.18" X 3" MIDDLE RISER COVER, RIGHT	
18	2	ESC-1326-RIS	30" X 42" BACK WALL RISER	
19	1	ESC-1326-SLV	STRAIGHT, 8" X 1.5" X 1.5" SIDE WALL TRD LEVELER	
20	1	ESC-1326-SWL	30" X 42" SIDE WALL, LEFT	
21	1	ESC-1326-SWR	STRAIGHT, 30" X 42" SIDE WALL, RIGHT	
22	2	ESC-1326-TR	3" REV. RAD. X 33.93" RISER	
23	2	ESC-1326-TT	FLAT, 28.27" X 3" TOP RISER COVER	
24	1	IPC-AB90	90 DEGREE BRACE	
25	-	SSC-1099	BEAD RECEIVER, 19' REQUIRED	

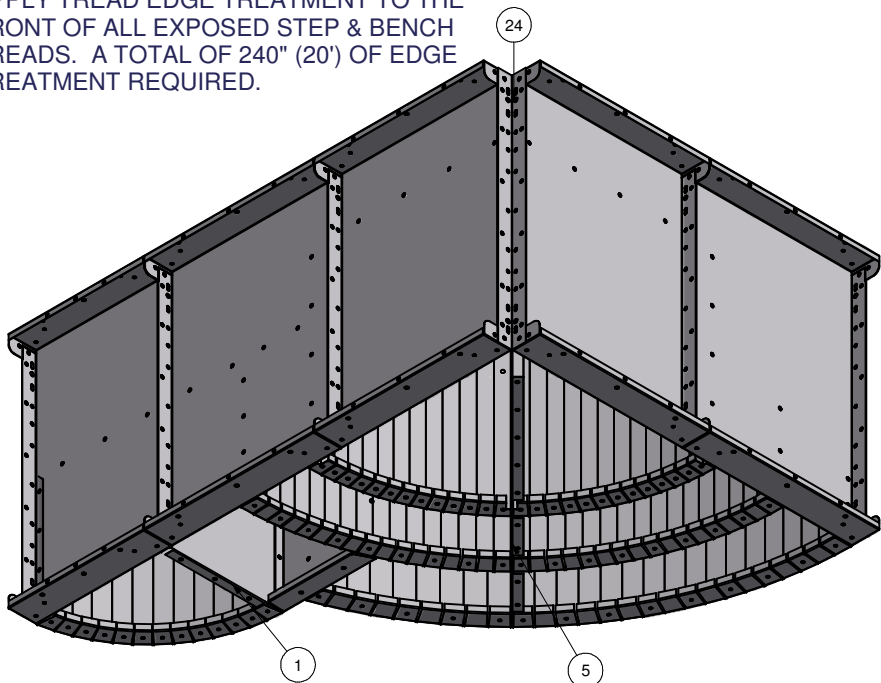
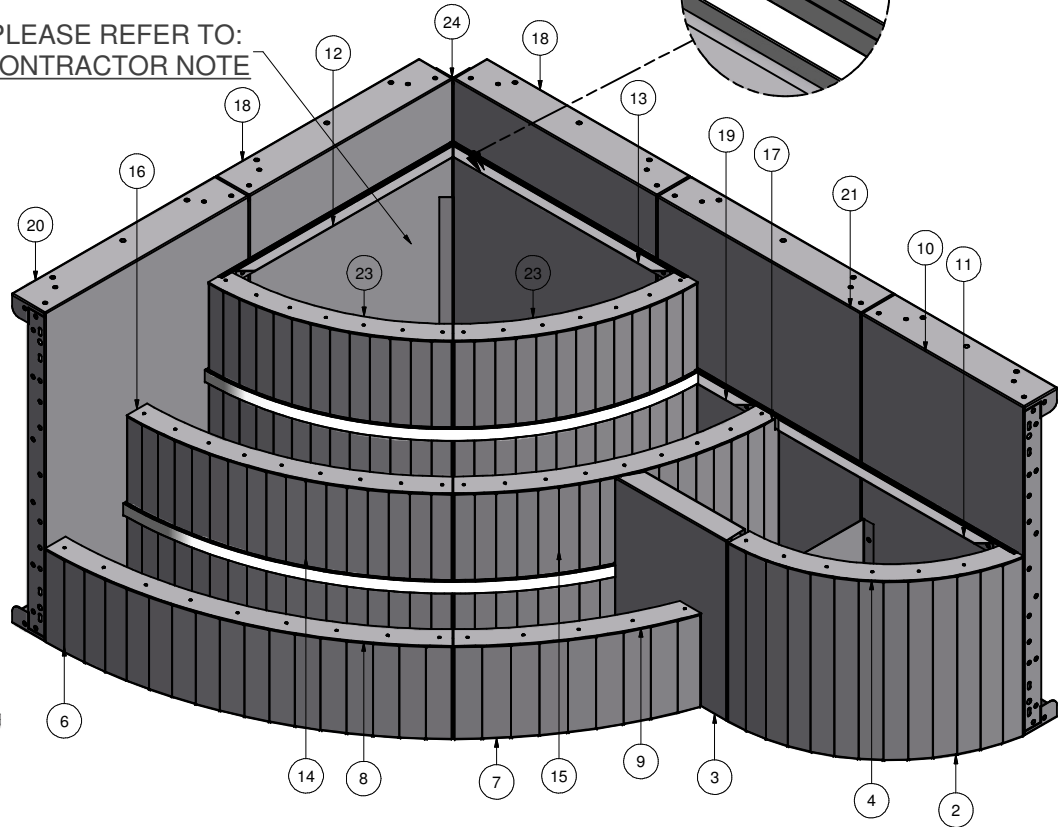
APPLY TREAD EDGE TREATMENT TO THE FRONT OF ALL EXPOSED STEP & BENCH TREADS. A TOTAL OF 240" (20') OF EDGE TREATMENT REQUIRED.

KEEP BEAD RECEIVERS ATTACHED TO THE STEP & BENCH TREADS FOR SHIPPING. A TOTAL OF 228" (19') OF BEAD RECEIVER REQUIRED.

INCLUDE (1) PVC 6" RADIUS CORNER INSERT, 8" LONG, AND (1) 3" DIAG. INSERT.

BEAD RECEIVER DETAILS

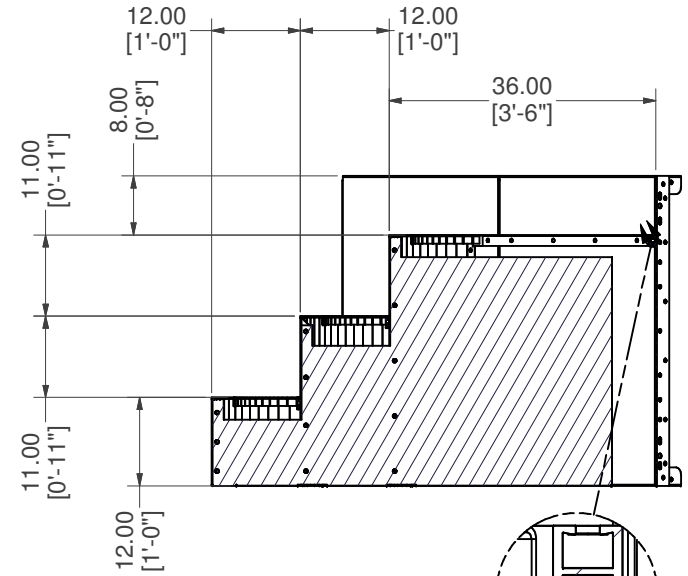
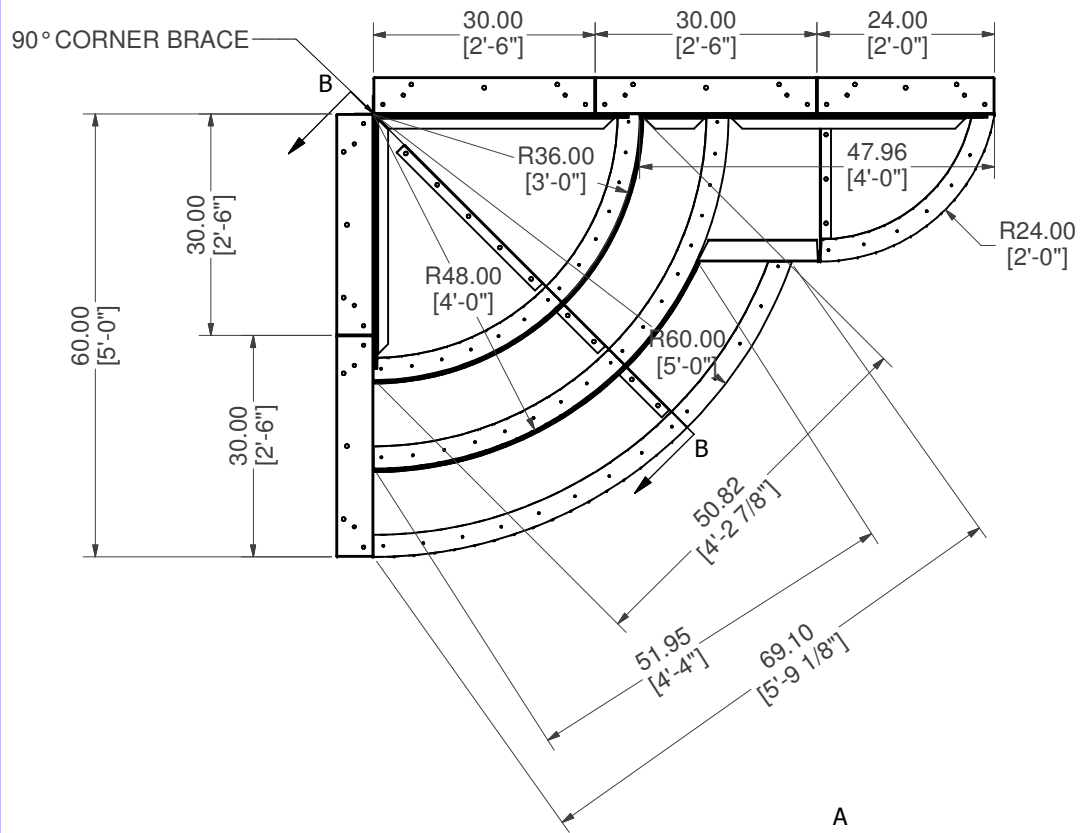
PLEASE REFER TO: CONTRACTOR NOTE



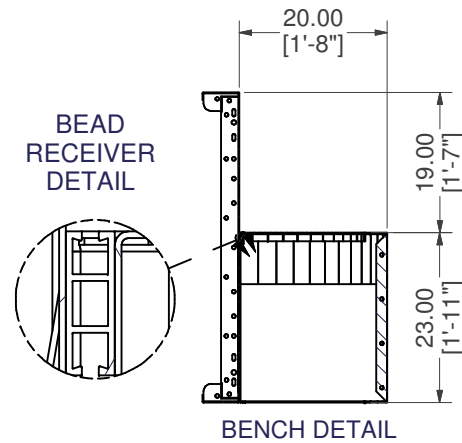
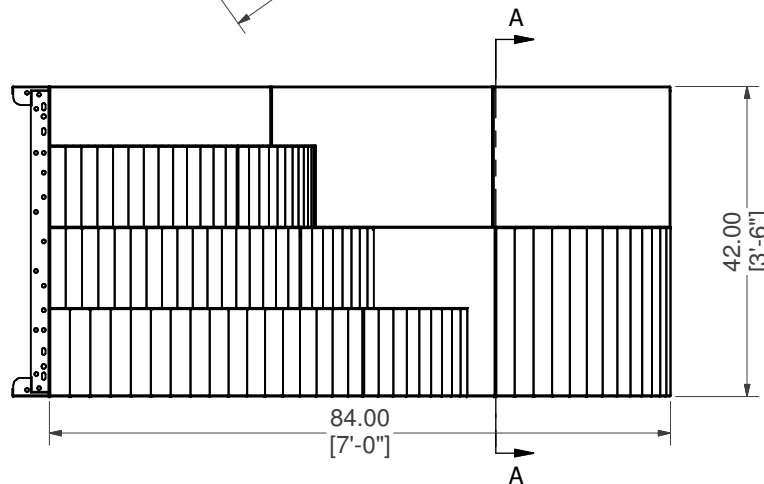
**CONTRACTOR NOTE:**  
BACK FILL TREAD AREA WITH COMPACTED EARTH MATERIAL. FINISH TREAD AREA WITH 2" OF HARDEN FLOOR MATERIAL TO MATCH 8" DEPTH OF FIRST STEP (FLUSH WITH TOP OF TREAD LEVELERS).

## 5' X 7' CRN WEDDING CAKE STEP/BENCH, RIGHT

<b>PART #:</b> ESC-1326	<b>WEIGHT:</b> 383.87 lbmass	<b>MACHINE TIME:</b> N/A	<b>FILE/DIRECTORY:</b> P:\2013 SS\ESC-1326.idw
<b>LATHAM INTERNATIONAL</b>	TOLERANCES EXCEPT AS NOTED	<b>MATERIAL:</b>	<b>DATE:</b> 11/20/2013
	0/0 0.0 0.00 0.000 0' ±1/8 ±0.25 ±0.0625 ±0.03125 ±1/2"	<b>DRAWN BY:</b> BW	<b>NOTES:</b>
		<b>SHEET:</b> 1 OF 9	



BEAD RECEIVER  
DETAIL



# 5' X 7' CRN WEDDING CAKE STEP/BENCH, RIGHT

<b>PART #:</b> ESC-1326	<b>WEIGHT:</b> 383.87 lbmass	<b>MACHINE TIME:</b> N/A	<b>FILE/DIRECTORY:</b> P:\2013 SS\ESC-1326.idw
<b>LATHAM</b> INTERNATIONAL	TOLERANCES EXCEPT AS NOTED	<b>MATERIAL:</b>	<b>DATE:</b> 11/20/2013
	0/0 0.0 0.00 0.000 0' ±1/8 ±0.25 ±0.0625 ±0.03125 ±1/2'	<b>DRAWN BY:</b> BW	<b>NOTES:</b>
			<b>SHEET:</b> 2 OF 9