

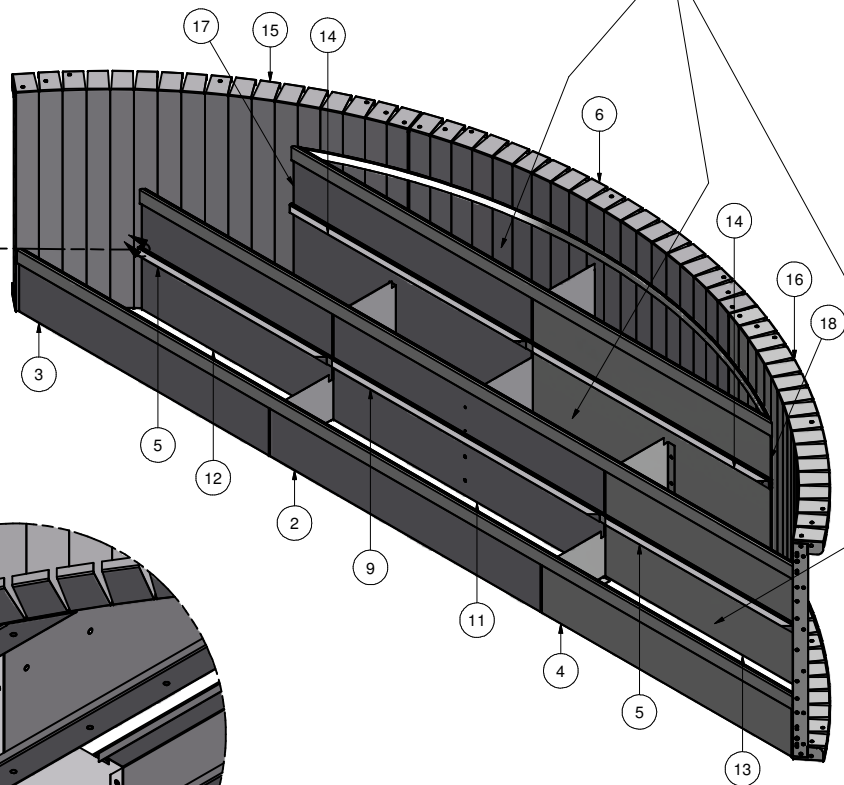
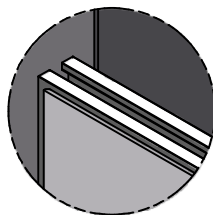
Parts List

ITEM	QTY	PART NUMBER	DESCRIPTION
1	34	COP-KCVRET-W-1	COP COPING STIFFNER 1 5/8"-1PC
2	1	ESC-1411-BR	STRAIGHT, 59.93" X 9.5" BOTTOM TREAD RISER
3	1	ESC-1411-BRL	STRAIGHT, 55.5" X 9.5" BOTTOM TREAD RISER, LEFT
4	1	ESC-1411-BRR	STRAIGHT, 55.5" X 9.5" BOTTOM TREAD RISER, RIGHT
5	2	ESC-1411-BTLV	STRAIGHT, 41.5" X 1.5" X 1.5" BOTTOM TREAD LEVELER
6	1	ESC-1411-BW	RADIUS, 9'-0" X 72" X 42" BACK WALL, CENTER
7	1	ESC-1411-CNS	BRACE, 41.86" X 33.86" TREAD SUPPORT, CENTER LEFT
8	1	ESC-1411-CNSR	BRACE, 41.86" X 33.86" TREAD SUPPORT, RIGHT
9	1	ESC-1411-CTLV	STRAIGHT, 59" X 1.5" X 1.5" BOTTOM CNT TREAD LEVELER
10	1	ESC-1411-MNS	BRACE, 41.86" X 33.86" TREAD SUPPORT, CENTER
11	1	ESC-1411-MR	STRAIGHT, 59.93" X 20.5" MIDDLE TREAD RISER
12	1	ESC-1411-MRL	STRAIGHT, 42.55" X 20.5" MIDDLE TREAD RISER, LEFT
13	1	ESC-1411-MRR	STRAIGHT, 42.55" X 20.5" MIDDLE TREAD RISER, RIGHT
14	2	ESC-1411-MTLV	STRAIGHT, 52" X 1.5" X 1.5" MIDDLE TREAD LEVELER
15	1	ESC-1411-SWL	RADIUS, 9'-0" X 63" X 42" SIDE WALL, LEFT
16	1	ESC-1411-SWR	RADIUS, 9'-0" X 63" X 42" SIDE WALL, RIGHT
17	1	ESC-1411-TRL	STRAIGHT, 53.17" X 31.5" TOP TREAD RISER, LEFT
18	1	ESC-1411-TRR	STRAIGHT, 53.17" X 31.5" TOP TREAD RISER, RIGHT
19	2	M0065	MEGA Z-RIB
20	1	OPC-CONREC-120	CONCRETE RECEPTOR 36' REQUIRED
21	-	SSC-1099	BEAD RECEIVER, 30' REQUIRED

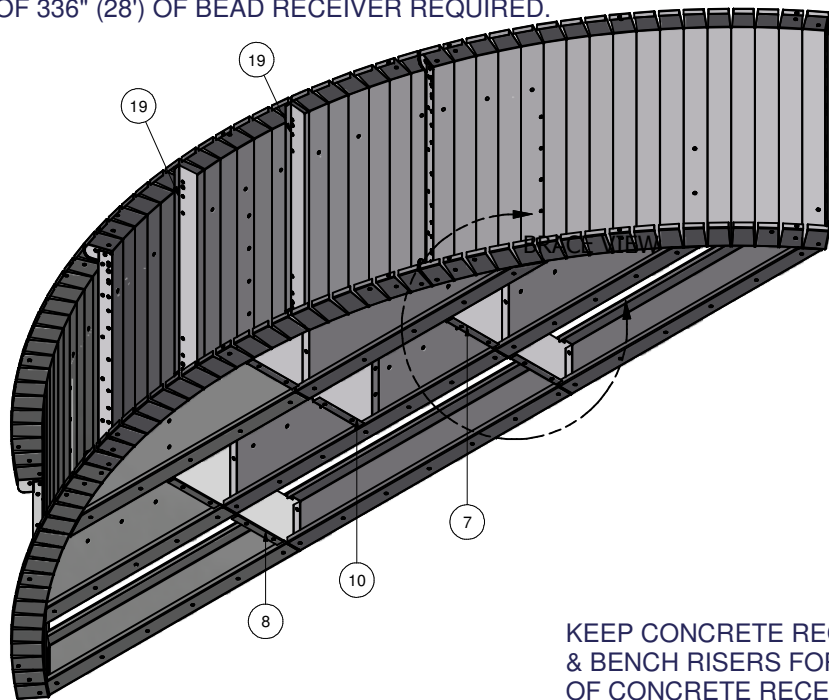
NOTE:
LEFT SIDE AND RIGHT SIDE STEP
PARTS ARE SYMMETRICAL.

**PLEASE REFER TO:
CONTRACTOR NOTE**

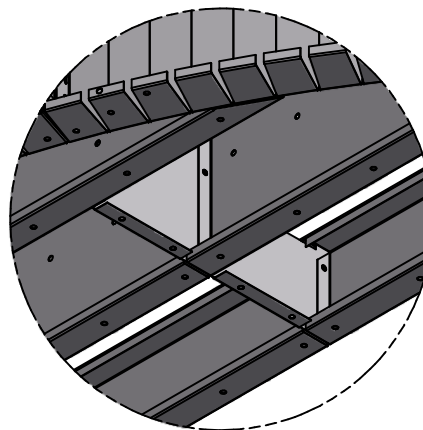
**BEAD RECEIVER
WITH LEVELER
ANGLE DETAIL**



KEEP BEAD RECEIVER ATTACHED TO THE
STEP RISERS & WALL FOR SHIPPING. A TOTAL
OF 336" (28') OF BEAD RECEIVER REQUIRED.




BRACE VIEW



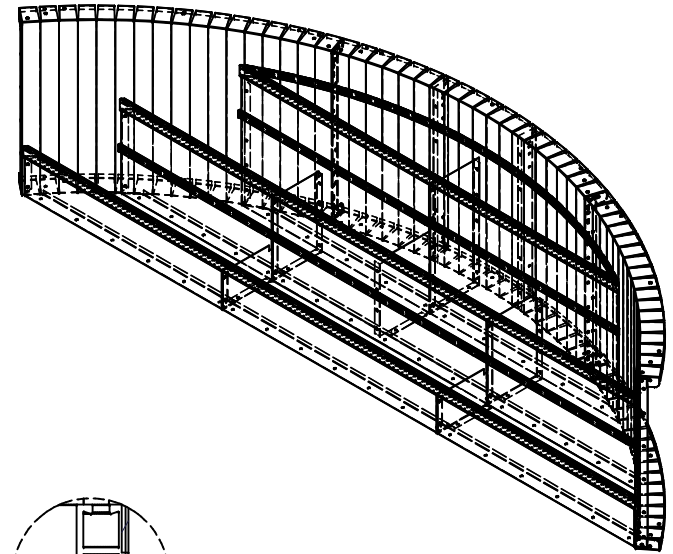
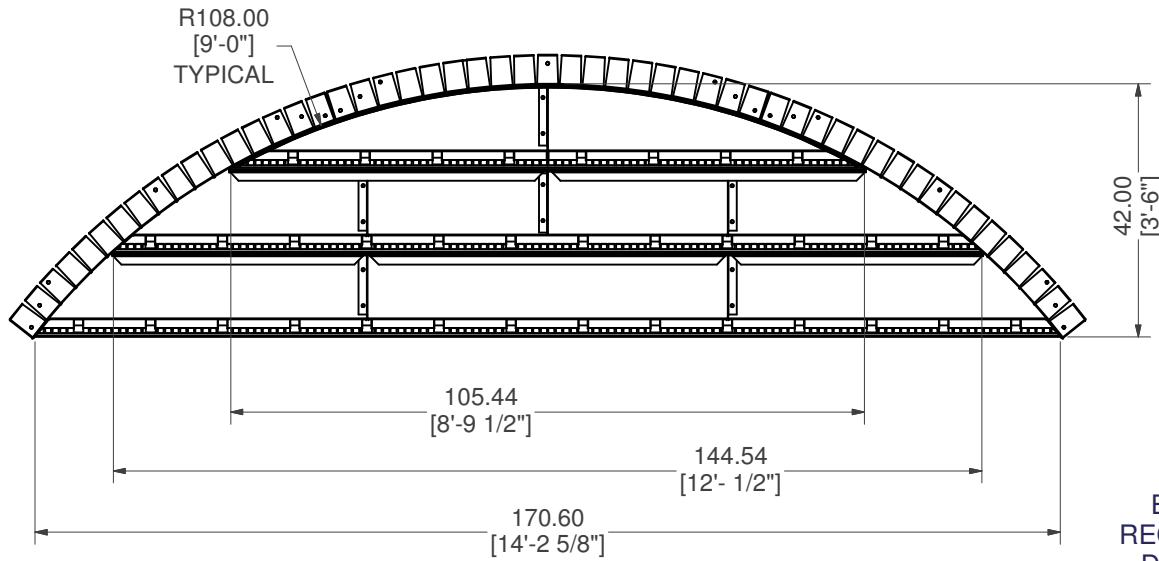
KEEP CONCRETE RECEPTOR ATTACHED TO THE STEP
& BENCH RISERS FOR SHIPPING. A TOTAL OF 432" (36')
OF CONCRETE RECEPTOR IS REQUIRED.

CONTRACTOR NOTE:
BACK FILL STEP AREA WITH COMPACTED
EARTH MATERIAL. FINISH STEP AREA WITH
2" OF HARDEN FLOOR MATERIAL TO MATCH
REQUIRED DEPTH (FLUSH WITH TOP OF
LEVELERS).

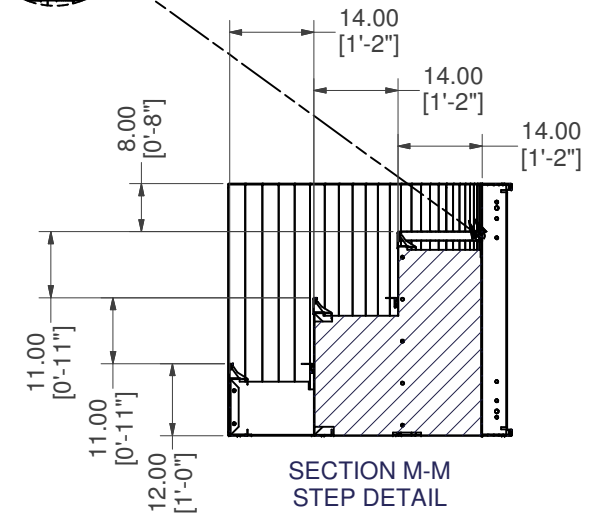
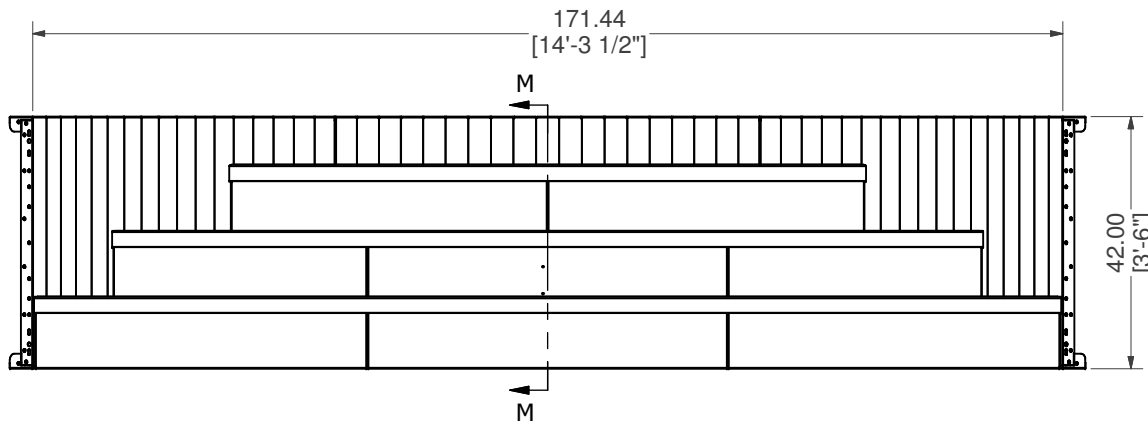
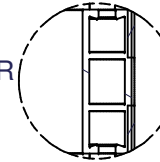
14'-3" X 9'-0" RADIUS STEEL STEP

PART #: ESC-1411 	WEIGHT: 525.92 lbmass	MACHINE TIME: N/A	FILE/DIRECTORY: P:\2014 SS\ESC-1411.idw
	TOLERANCES EXCEPT AS NOTED 0/0 0.0 0.00 0.000 0' ±1/8 ±0.25 ±0.0625 ±0.03125 ±1/2'	MATERIAL:	DATE: 4/1/2014
DRAWN BY: BW	SHEET: 1 OF 11		

NOTE:
LEFT SIDE AND RIGHT SIDE STEP
PARTS ARE SYMMETRICAL.



BEAD
RECEIVER
DETAIL



14'-3" X 9'-0" RADIUS STEEL STEP

PART #: ESC-1411

WEIGHT:
525.92 lbmass

MACHINE TIME:
N/A

FILE/DIRECTORY:

P:\2014 SS\ESC-1411.idw



TOLERANCES EXCEPT
AS NOTED
0/0 0.0 0.00 0.000 0'
±1/8 ±0.25 ±0.0625 ±0.03125 ±1/2'

MATERIAL:

DATE: 4/1/2014

NOTES:

DRAWN BY: BW

SHEET: 2 OF 11