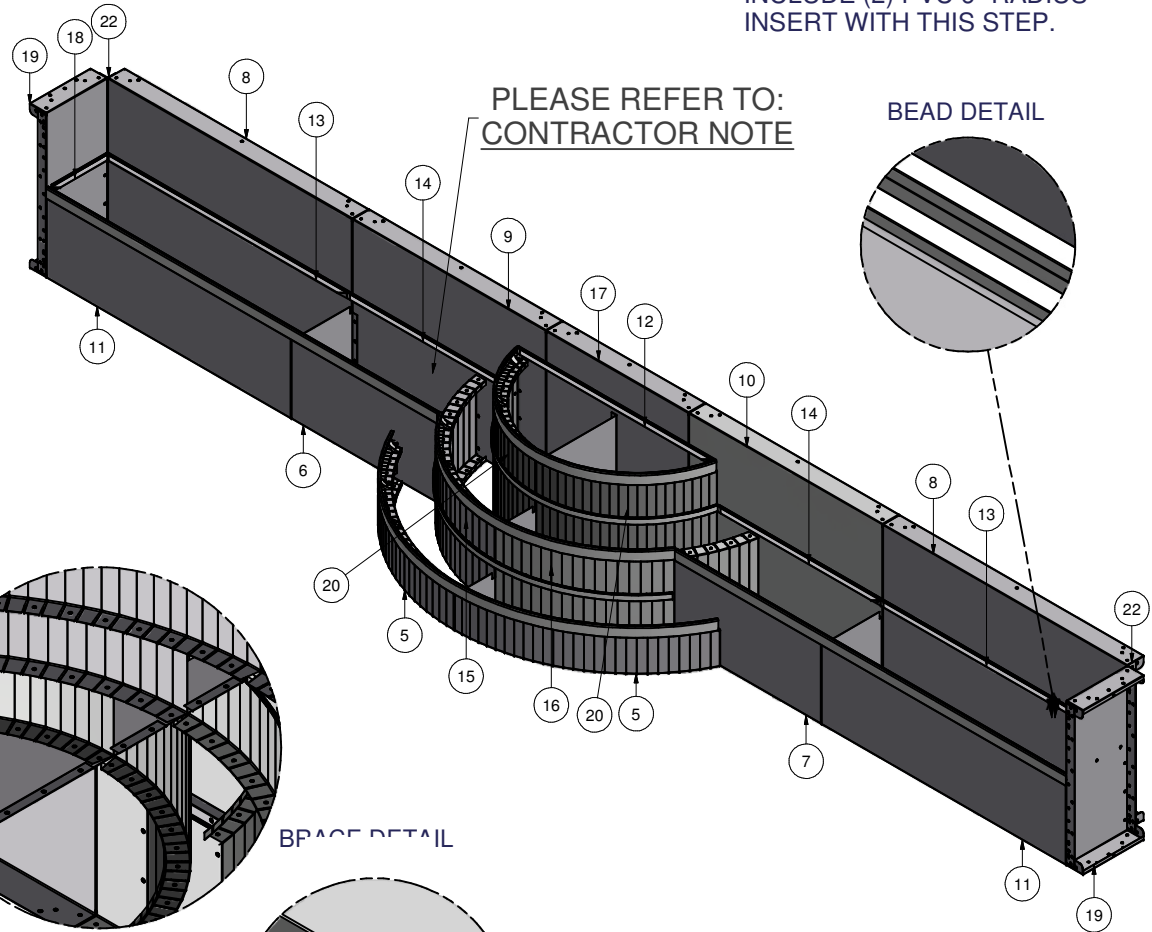


Parts List

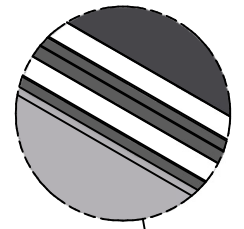
ITEM	QTY	PART NUMBER	DESCRIPTION
1	41	COP-KCVRET-W-1	COP COPING STIFFNER 1 5/8"-1PC
2	1	ESC-1449-B	WEDDING CAKE STEP BRACE
3	1	ESC-1449-B1	BRACE, 20" X 17.82" TREAD SUPPORT
4	1	ESC-1449-B2	BRACE, 20" X 17.82" TREAD SUPPORT
5	2	ESC-1449-BR	REV. RAD, 4'-6" X 59.91" X 9.5" BOTTOM TREAD RISER, LEFT
6	1	ESC-1449-BRISL	BENCH RISER 43.53" X 20.5", LEFT
7	1	ESC-1449-BRISR	BENCH RISER 43.53" X 20.5", LEFT
8	2	ESC-1449-BWE	STRAIGHT, 72" X 42" BACK WALL, W/2 Z-RIBS
9	1	ESC-1449-BWL	STRAIGHT, 57" X 42" BACK WALL, LEFT
10	1	ESC-1449-BWR	STRAIGHT, 57" X 42" BACK WALL, RIGHT
11	2	ESC-1449-ERIS	BENCH RISER 72" X 20.5", 2 Z-RIBS
12	1	ESC-1449-LV	STRAIGHT, 56" X 1.5" X 1.5" LEVELER
13	2	ESC-1449-LV2	STRAIGHT, 70" X 1.5" X 1.5" LEVELER
14	2	ESC-1449-LV3	STRAIGHT, 56" X 1.5" X 1.5" LEVELER
15	1	ESC-1449-MRL	REV. RAD, 3'-6" X 59.91" X 20.5" MIDDLE TREAD RISER, LEFT
16	1	ESC-1449-MRR	REV. RAD, 3'-6" X 59.91" X 20.5" MIDDLE TREAD RISER, RIGHT
17	1	ESC-1449-RIS	STRAIGHT, 42" X 42" RISER
18	2	ESC-1449-SLV	STRAIGHT, 56" X 1.5" X 1.5" LEVELER
19	2	ESC-1449-SW	STRAIGHT, 18" X 42" SIDE WALL
20	2	ESC-1449-TR	2'-6" REV. RAD. X 31.5" TOP RISER
21	2	ESC-1449-Z-20	Z-RIB 20" (FOR ESC-1449-ERIS)
22	1	IPC-AB90	ANGLE BRACE, 45 DEGREE CORNER, 42" HEIGHT
23	1	OPC-CONREC-120	CONCRETE RECEPTOR 43' REQUIRED
24	1	SSC-1099	BEAD RECEIVER 42' REQUIRED

INCLUDE (2) PVC 6" RADIUS INSERT WITH THIS STEP.

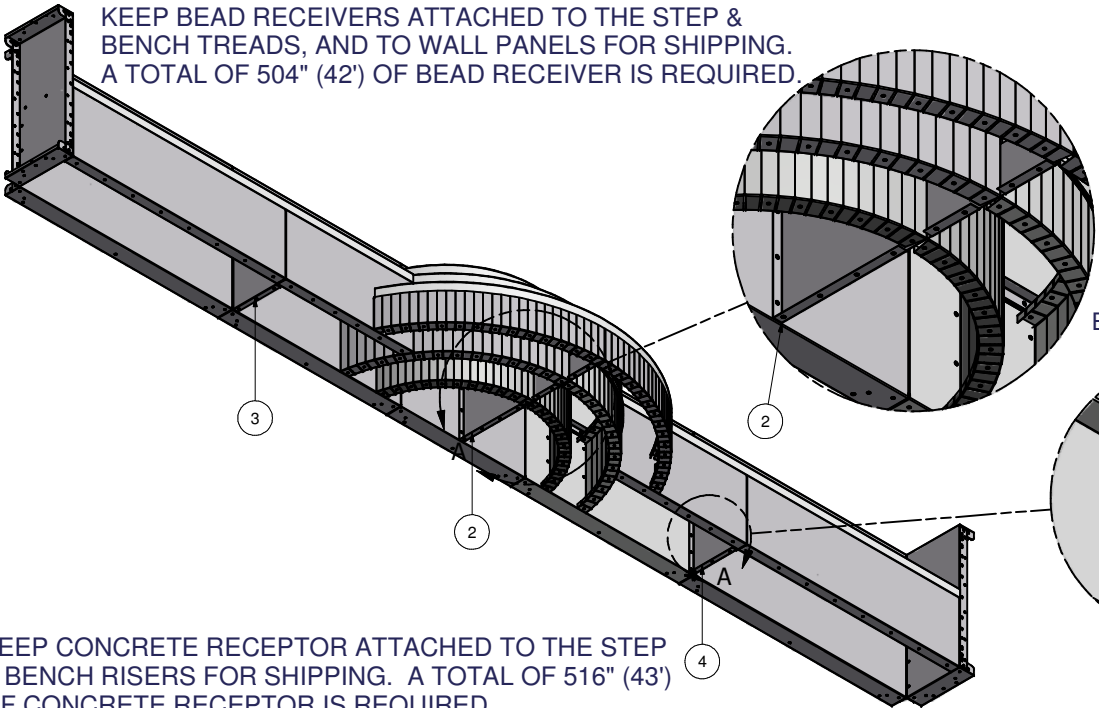


PLEASE REFER TO:
CONTRACTOR NOTE

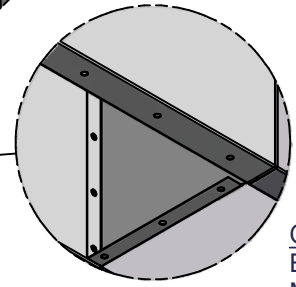
BEAD DETAIL



KEEP BEAD RECEIVERS ATTACHED TO THE STEP & BENCH TREADS, AND TO WALL PANELS FOR SHIPPING. A TOTAL OF 504" (42') OF BEAD RECEIVER IS REQUIRED.




BRACE DETAIL



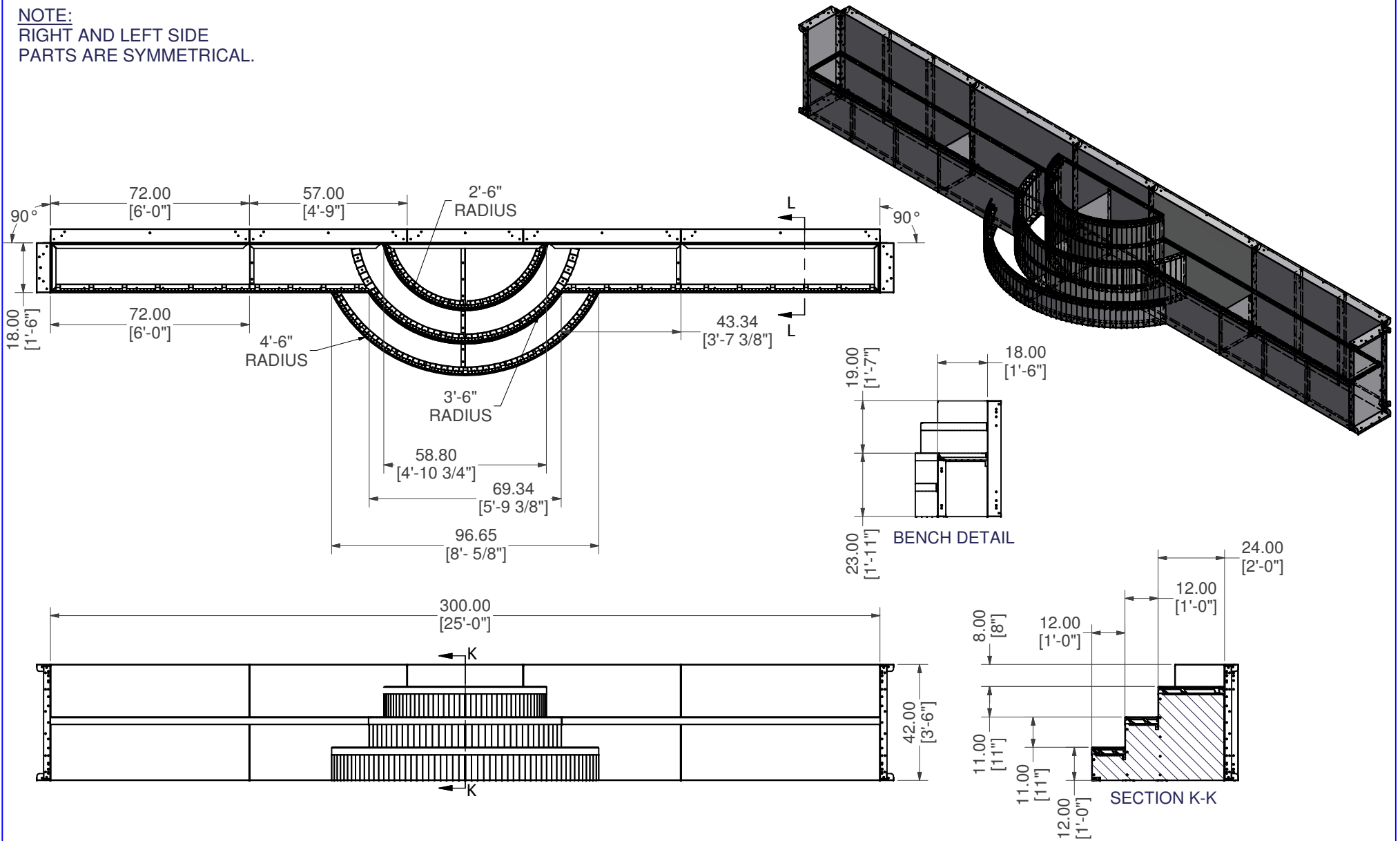
KEEP CONCRETE RECEPTOR ATTACHED TO THE STEP & BENCH RISERS FOR SHIPPING. A TOTAL OF 516" (43') OF CONCRETE RECEPTOR IS REQUIRED.

CONTRACTOR NOTE:
BACK FILL BENCH AREA WITH COMPACTED EARTH MATERIAL. FINISH BENCH AREA WITH 2" OF HARDENED FLOOR MATERIAL TO A DEPTH OF 23", LEVEL WITH TOP OF BEAD RECEIVER.

25' X 3'-6" X 180° WC STEP / DOUBLE BENCHES

PART #: ESC-1449 	WEIGHT: 813.74 lbmass	MACHINE TIME: N/A	FILE/DIRECTORY: P:\2014 SS\ESC-1449.idw
	TOLERANCES EXCEPT AS NOTED 0/0 0.0 0.00 0.000 0' ±1/8 ±0.25 ±0.0625 ±0.03125 ±1/2"	MATERIAL:	DATE: 4/16/2014
	DRAWN BY: BW	SHEET: 1 OF 8	

NOTE:
RIGHT AND LEFT SIDE
PARTS ARE SYMMETRICAL.



25' X 3'-6" X 180° WC STEP / DOUBLE BENCHES

PART #: ESC-1449

WEIGHT:
813.74 lbmass

MACHINE TIME:
N/A

FILE/DIRECTORY:

P:\2014 SS\ESC-1449.idw

LATHAM
INTERNATIONAL

TOLERANCES EXCEPT
AS NOTED
0/0 0.0 0.00 0.000 0'
±1/8 ±0.25 ±0.0625 ±0.03125 ±1/2'

MATERIAL:
DRAWN BY: BW

DATE: 4/16/2014
SHEET: 2 OF 8

NOTES: