

Parts List

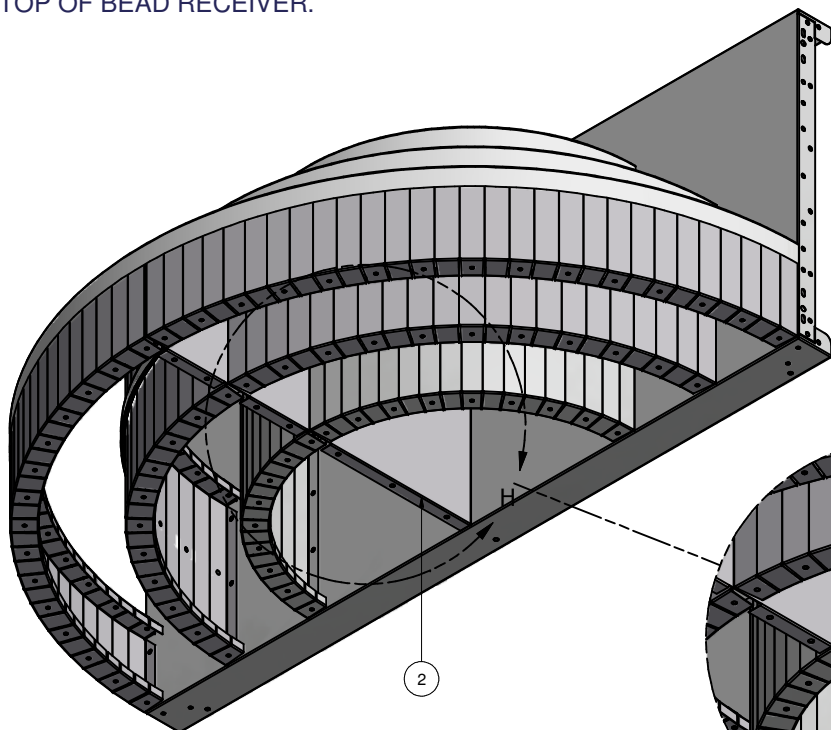
ITEM	QTY	PART NUMBER	DESCRIPTION
1	30	COP-KCVRET-W-1	COP COPING STIFFNER 1 5/8"-1PC
2	1	ESC-2545-B	BRACE, 41.79" X 31.5" STEP SUPPORT
3	2	ESC-2545-BR	4' REV. RAD. X 9.5" BOTTOM RISER
4	1	ESC-2545-BW	STRAIGHT, 8'-0", 2 RIB, PLAIN
5	2	ESC-2545-MR	3' REV. RAD. X 20.5" MIDDLE RISER
6	2	ESC-2545-TR	2' REV. RAD. X 31.5" TOP RISER
7	2	M0065-1	PANEL Z-RIB W/BUTTRESS HOLES
8	1	OPC-CONREC-120	CONCRETE RECEIVER, 29' REQUIRED
9	1	SSC-1099	BEAD RECEIVER, 20' REQUIRED

KEEP CONCRETE RECEPTOR ATTACHED TO THE STEP & BENCH RISERS FOR SHIPPING. A TOTAL OF 348" (29') OF CONCRETE RECEPTOR IS REQUIRED.

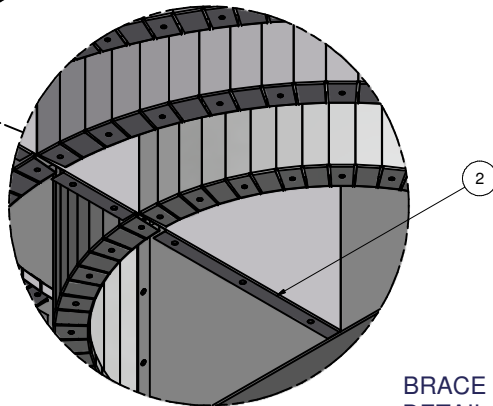
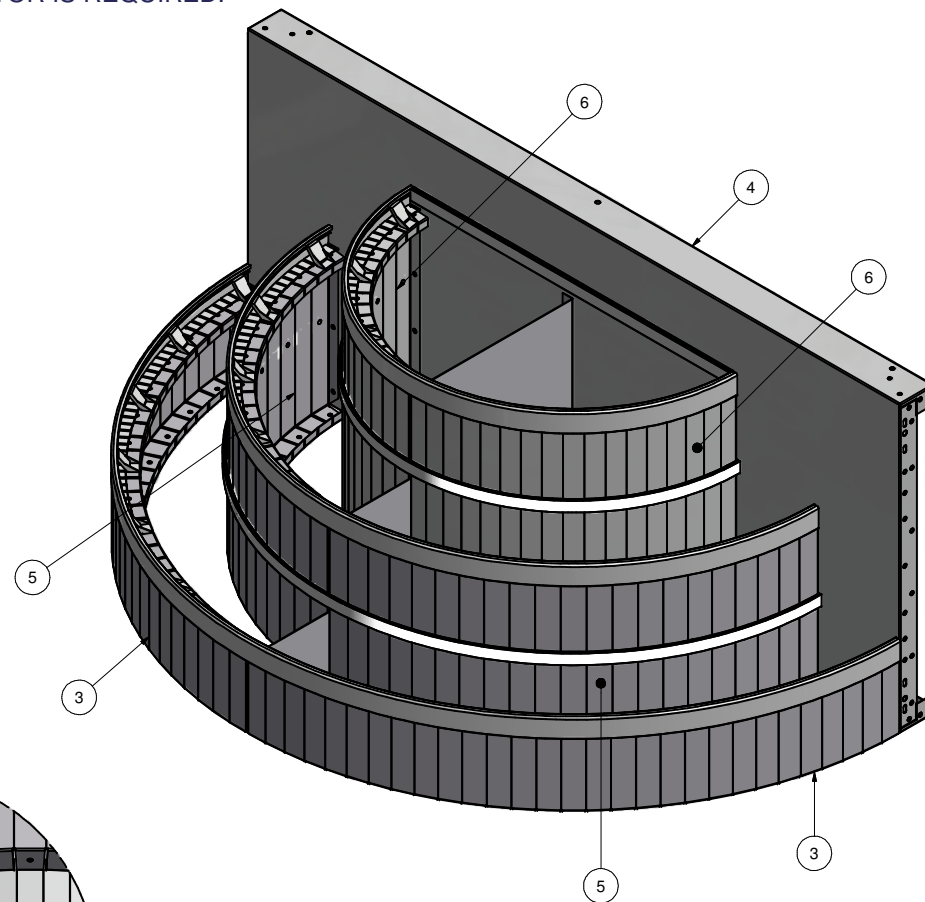
KEEP BEAD RECEIVERS ATTACHED TO THE TREADS FOR SHIPPING. TOTAL OF 240" (20') BEAD RECEIVER.

CONTRACTOR NOTE:


BACK FILL STEP AREA WITH COMPACTED EARTH MATERIAL. FINISH STEP AREA WITH 2" OF HARDEN FLOOR MATERIAL, LEVEL TO THE TOP OF BEAD RECEIVER.

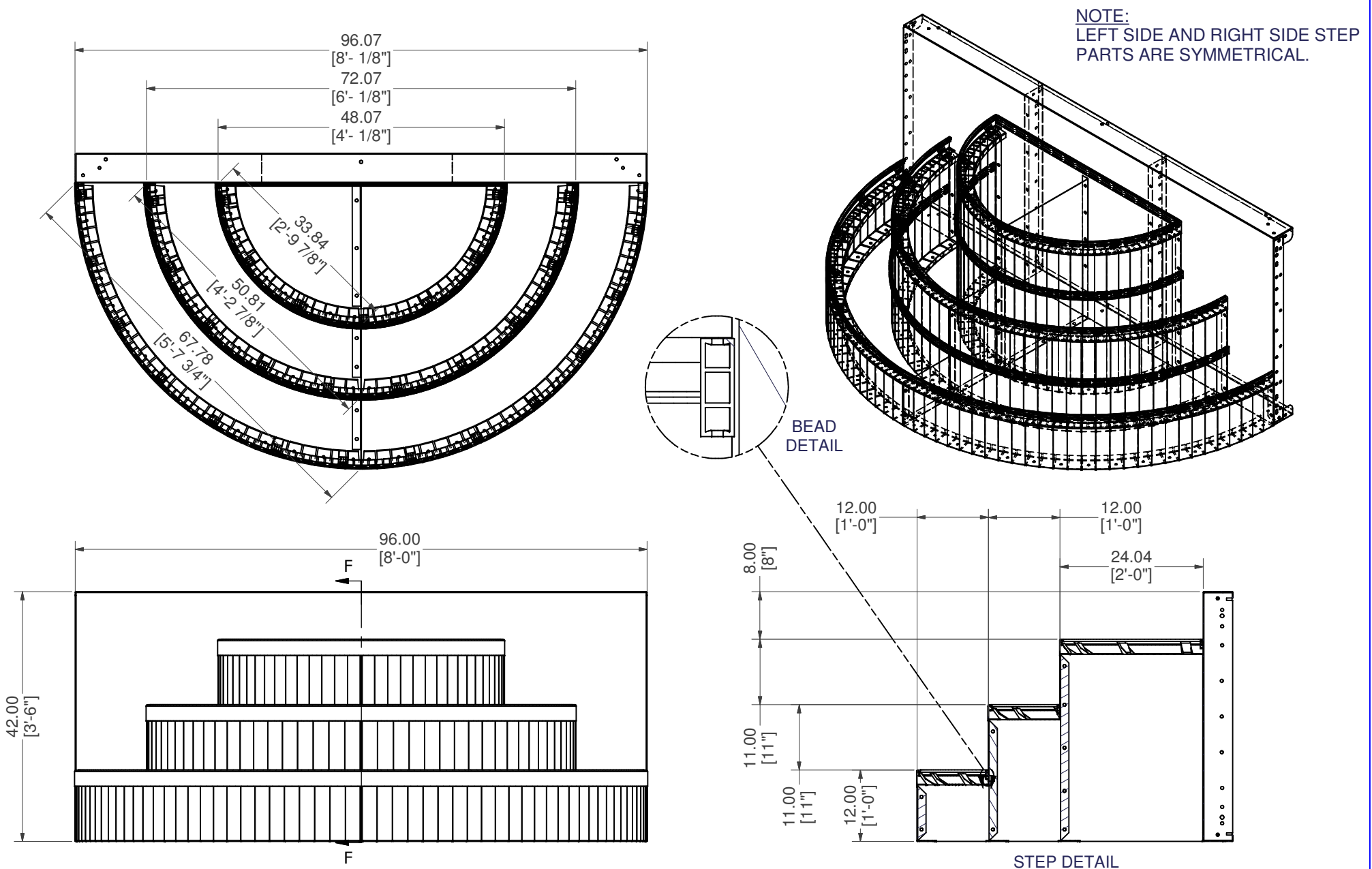


NOTE:
LEFT SIDE AND RIGHT SIDE STEP
PARTS ARE SYMMETRICAL.

BRACE
DETAIL

STEEL WD CAKE 180D 8' OPEN TOP

PART #: ESC-2545 	WEIGHT: 319.90 lbmass	MACHINE TIME: N/A	FILE/DIRECTORY: I:\PRODUCT_CATALOG\2015 SS\ESC-2545.idw
	TOLERANCES EXCEPT AS NOTED 0/0 0.0 0.00 0.000 0' ±1/8 ±0.25 ±0.0625 ±0.03125 ±1/2"	MATERIAL: DRAWN BY: RP	DATE : 8/3/2015 SHEET : 1 OF 4 NOTES:



STEEL WD CAKE 180D 8' OPEN TOP

PART #: ESC-2545

WEIGHT:
319.90 lbmass

MACHINE TIME:
N/A

FILE/DIRECTORY:

I:\PRODUCT_CATALOG\2015 SS\ESC-2545.idw



TOLERANCES EXCEPT
AS NOTED
0/0 0.0 0.00 0.000 0'
±1/8 ±0.25 ±0.0625 ±0.03125 ±1/2"

MATERIAL:

DRAWN BY:

RP

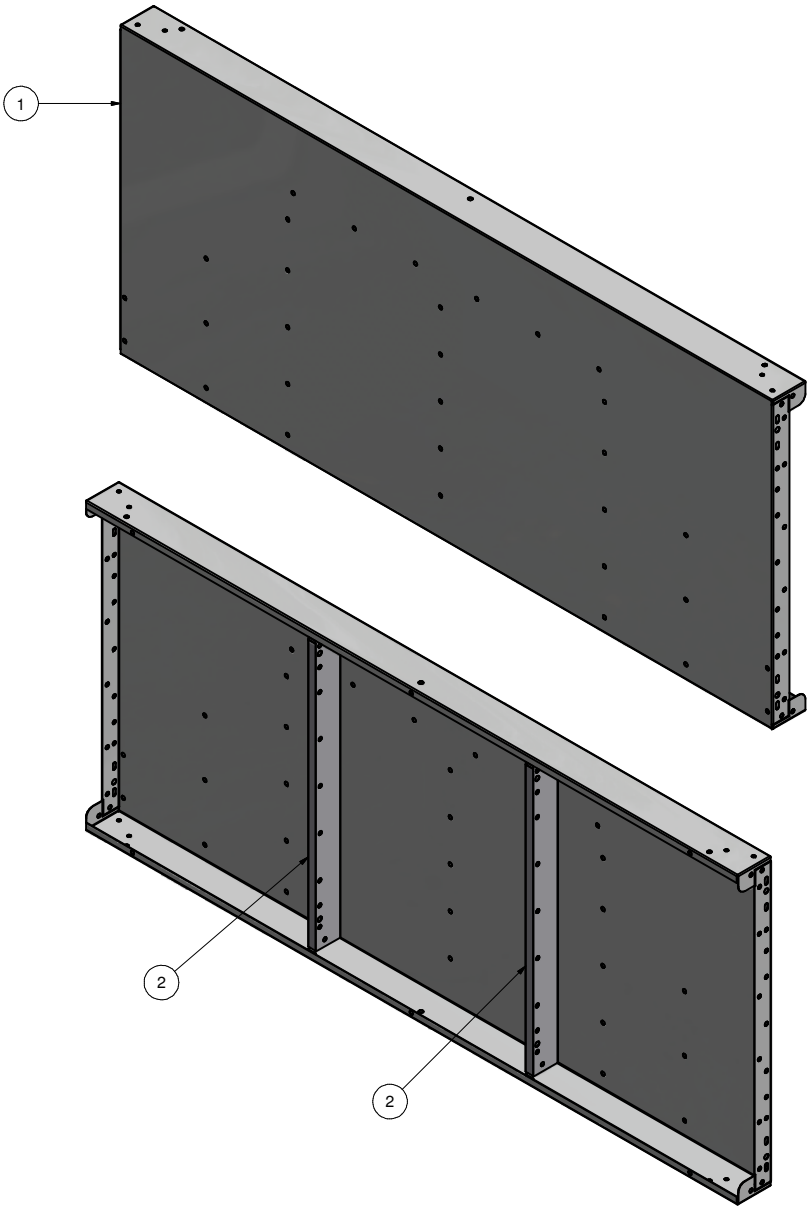
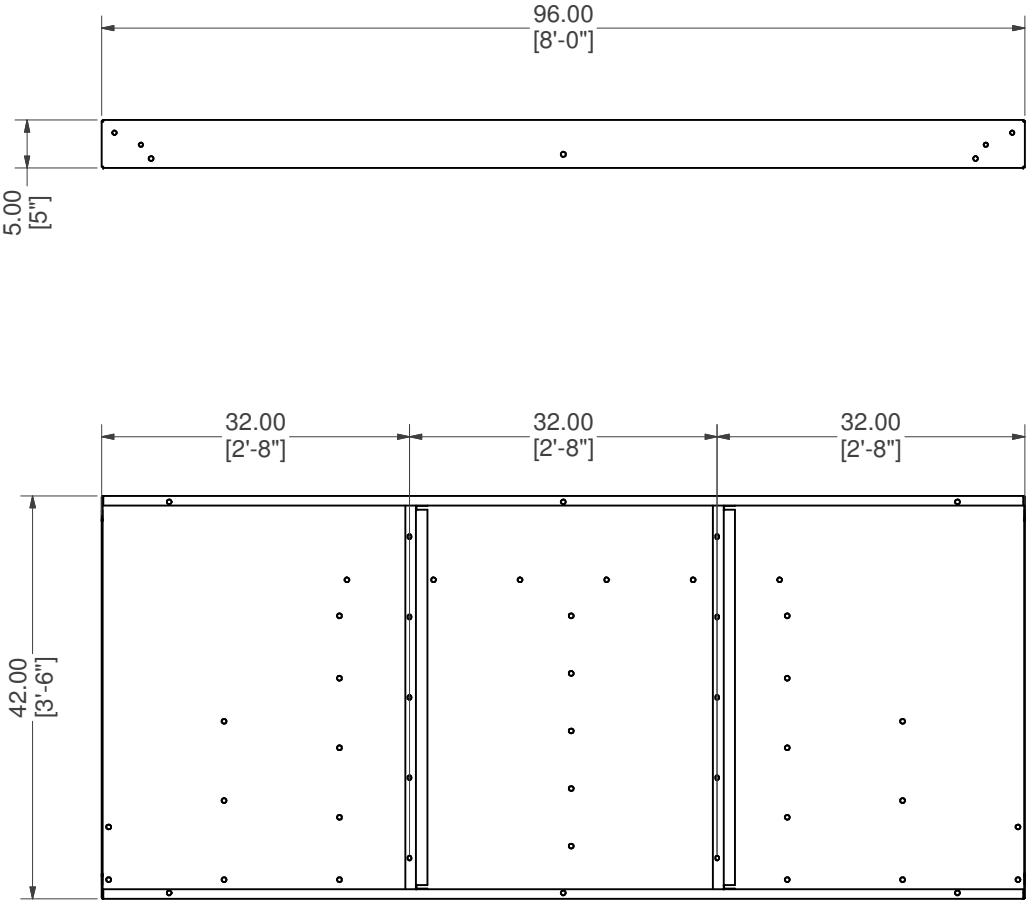
DATE : 8/3/2015

SHEET : 2 OF 4

NOTES:

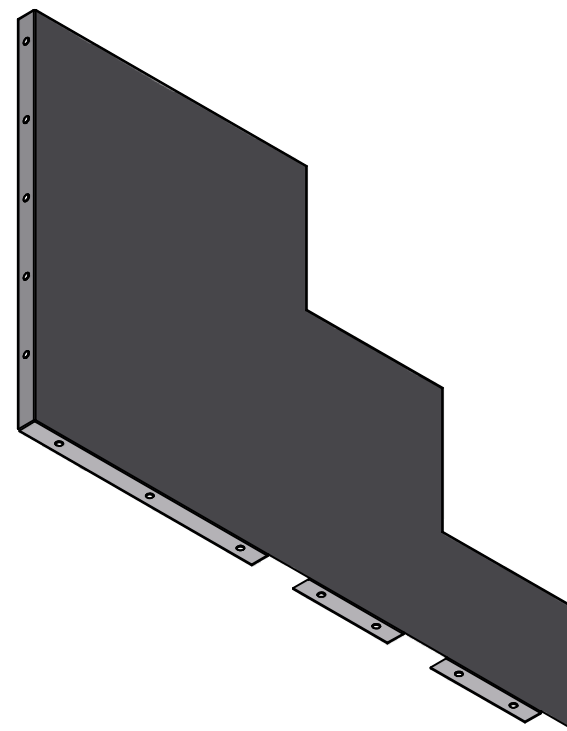
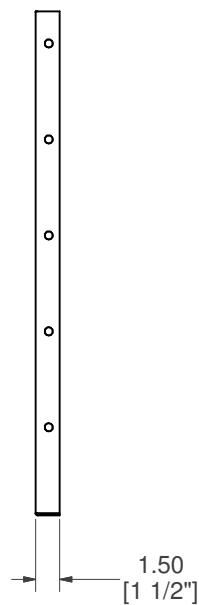
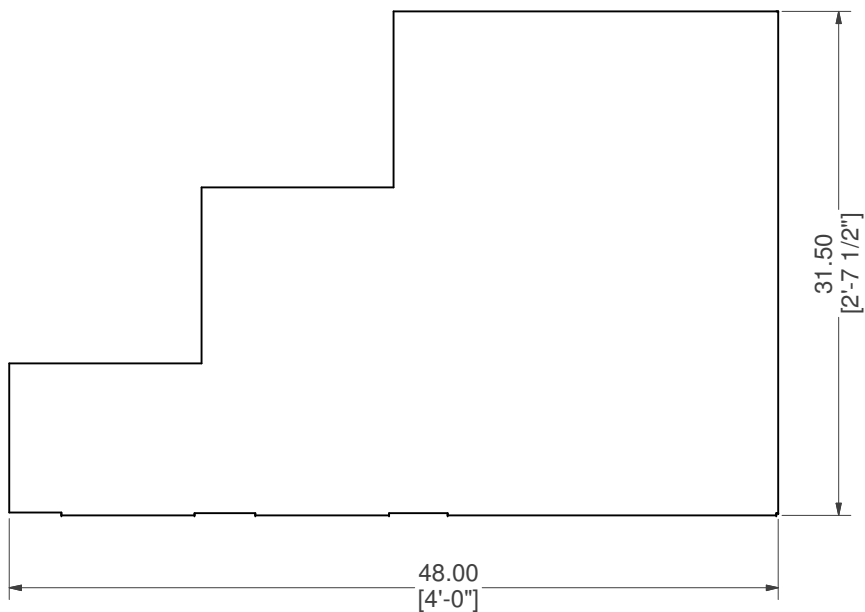
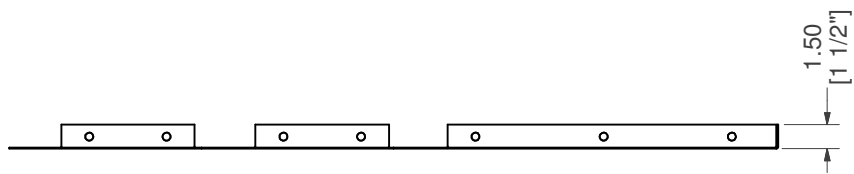
Parts List			
ITEM	QTY	PART NUMBER	DESCRIPTION
1	1	ESC-2545-BW	STRAIGHT, 8'-0", 2 RIB, PLAIN
2	2	M0065	PANEL Z-RIB W/BUTTRESS HOLES

WELDCODE #34




STRAIGHT, 8'-0", 2 RIB, PLAIN

PART #: ESC-2545-BW	WEIGHT: 119.23 lbmass	MACHINE TIME: N/A	FILE/DIRECTORY: I:\PRODUCT_CATALOG\2015 SS\ESC-2545.idw		
	TOLERANCES EXCEPT AS NOTED 0/0 0.0 0.00 0.000 0" ±1/8 ±0.25 ±0.0625 ±0.03125 ±1/2"	MATERIAL: DRAWN BY: RP		DATE : 8/3/2015 SHEET : 3 OF 4	NOTES: USE WELDCODE #34 LOCATE 32" FROM LEADING EDGE



BRACE, 41.79" X 31.5" STEP SUPPORT

PART #: ESC-2545-B	WEIGHT: 24.52 lbmass	MACHINE TIME: N/A	FILE/DIRECTORY: I:\PRODUCT_CATALOG\2015 SS\ESC-2545.idw	
	TOLERANCES EXCEPT AS NOTED 0/0 0.0 0.00 0.000 0' ±1/8 ±0.25 ±0.0625 ±0.03125 ±1/2"	MATERIAL: 14 GA. GALVANIZED	DATE : 8/3/2015	NOTES:
		DRAWN BY: RP	SHEET : 4 OF 4	