

INSTALLATION AND OPERATION INSTRUCTIONS FOR COLOR CASCADE™ WATERFALL FOUNTAIN

ITEM NO. 54514

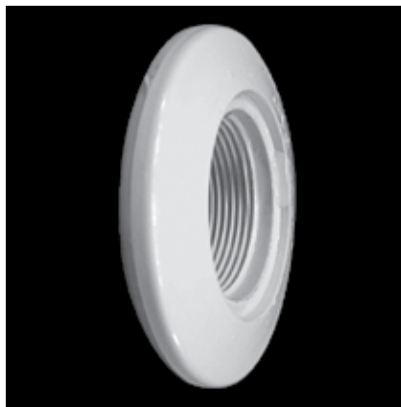


FIGURE 1
Pool Return Example

This fountain is to be assembled and installed by an adult. Please read the directions carefully before beginning assembly. Check that all hardware and parts are present BEFORE assembly (see parts illustration on page 3). Save all packaging material until assembly is complete to ensure that parts are not discarded.

⚠ WARNING:

FOR SAFETY PURPOSES, COMPLETELY REMOVE THE FOUNTAIN ASSEMBLY PRIOR TO ENTERING THE POOL.

⚠ WARNING:

IMPORTANT SAFETY INFORMATION. CHOKING HAZARD AND SUFFOCATION HAZARD. Not for Children under 3 years of age. Small parts. Keep small parts, hardware, and plastic bags out of the reach of children.

Color Cascade™ Waterfall Fountain Assembly & Installation Instructions:

DO NOT use with booster pump.

1. Insure that the filter is operating and properly maintained. Turn the pump off.
2. Locate the Automatic Cleaner Line or the Pool Return under the water's surface. (For most in-ground pools, there are multiple pool returns.) (**Figure 1** - Automatic Cleaner Line or Pool Return)
3. Securely screw the Flow-Control Fitting to the Pool Return with the Triangle Pressure Relief Hole pointed toward the pool bottom. (Fits a 1.5" threaded pool return inlet) (**Figure 2**)
4. Turn the Flow-Control Collar to the **OPEN** position, where Triangle Pressure Relief Hole is not covered by Flow-Control Collar. (**Figure 2 & 3**)
5. Connect the Elbow Fitting to the Flow-Control Fitting. (**Figure 4**)
6. Connect the Aluminum Pipe to the Elbow Fitting and screw the Nut closed. (**Figure 4**)
7. Connect the **Color Cascade™ Waterfall Fountain Head** to the other end of the Aluminum Pipe and screw the Nut until tight. **DO NOT SUBMERGE Color Cascade™ Waterfall Fountain** in water.
8. Face the front of the **Color Cascade™ Waterfall Fountain Head** toward the pool and ensure the Nut fittings are screwed securely to both ends of Aluminum Pipe. It is normal if some leaking occurs in and around the **Color Cascade™ Waterfall Fountain**.
9. Turn on the pool pump. (See Figure 5 on next page to view **Color Cascade™ Waterfall Fountain** in Pool).

NOTE: Colorful Lights may not be visible during daylight hours.

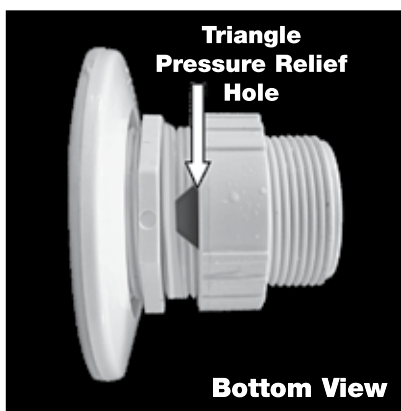


FIGURE 2
Pressure Relief Hole

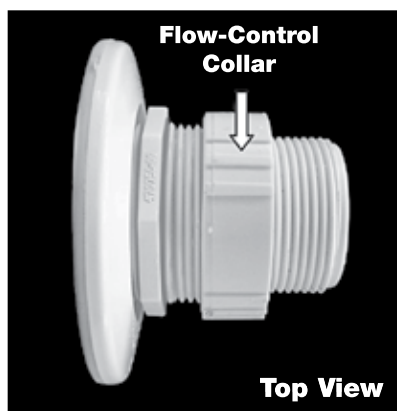


FIGURE 3
Flow Control Fitting



FIGURE 4
Elbow Fitting Connection to Aluminum Tube

NOTE: Remove the entire fountain during freezing conditions. Damage will result if the fountain is not drained and stored properly. It is advisable to store in a manner to prevent insects or trash, that would clog the jets, from entering the fountain.

INSTALLATION AND OPERATION INSTRUCTIONS FOR COLOR CASCADE™ WATERFALL FOUNTAIN

ITEM NO. 54514

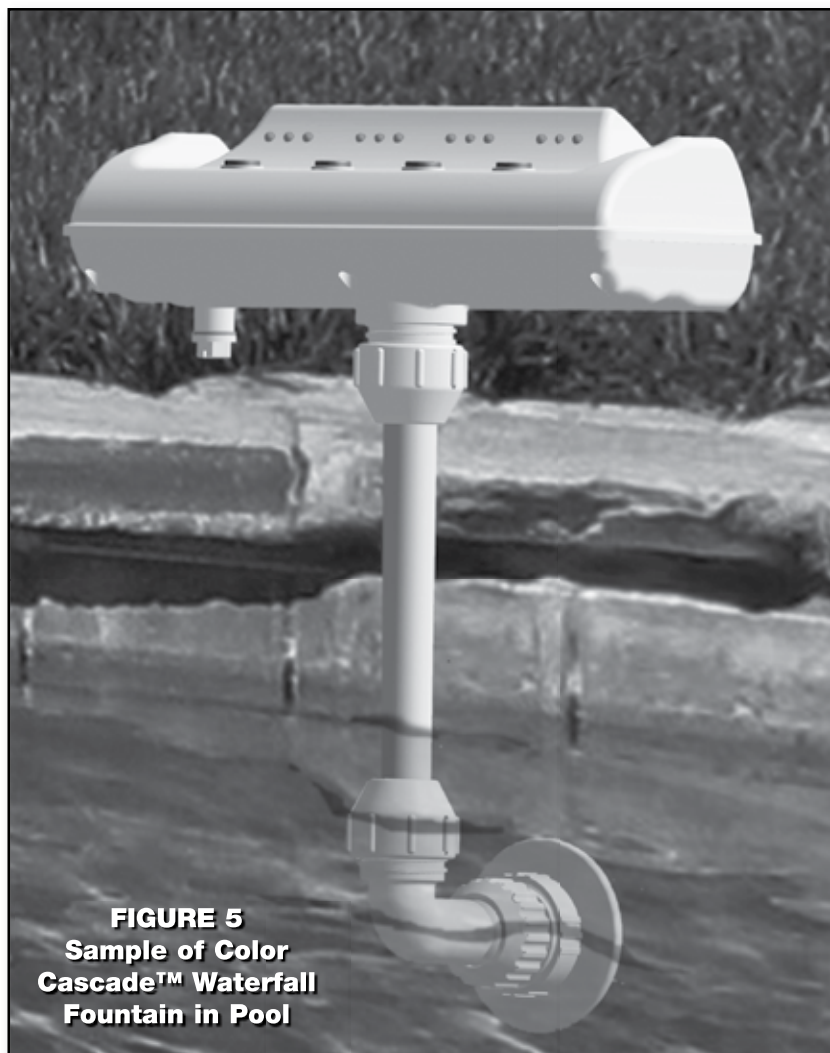


FIGURE 5
Sample of Color
Cascade™ Waterfall
Fountain in Pool

Adjustments:

If the water spray is not at the desired height or the lights are not on (visible at night), the water pressure/flow is probably too low.

1. Slowly screw the Flow-Control Collar until the water spray is at desired height.
2. If the results are not satisfactory, insert a Rubber Plug or Plastic Threaded Cap into the other pool returns until the water spray reaches desired height. The more inlets plugged, the higher the fountain spray. **Note:** This step is not necessary when connected to pool cleaner inlet.
3. In above-ground pool, if the water pressure/flow is still too low after you operate as above mentioned, you may need to change pump to one with more horse power.

If the water spray is too high, reduce the water pressure/flow.

1. Loosen the Flow-Control Collar until the Triangle Relief Hole is fully open. Height adjustment is achieved by covering more or less of the Triangle Pressure Relief Hole on your Flow Control Fitting. The more the triangle is covered, the higher the fountain spray and vice versa.
2. Open other returns in the pool, until water spray is at desired height.
3. If the results are not satisfactory, adjust the Return Valve of Pump until the water spray is at desired height.

TROUBLE SHOOTING

PROBLEM

Fountain Too Low

CAUSE

- a) Flow-Control Collar is opened too wide.
- b) Not enough inlets plugged.
- c) Dirty filter.

Fountain Too High

- a) Triangle pressure release hole is covered too much.
- b) Too many inlets are plugged.

Adapter will not fit inlet

- a) Carefully read page 1 instructions.

REMEDY

- a) Screw in Flow-Control Collar so triangle is covered more or completely.
- b) Plug more inlets.
- c) Backwash or clean filter unit.
- a) Unscrew Flow-Control Collar so less of triangle is covered.
- b) Unplug more inlets.
- a) See your dealer for help or recommendations.*

* Note: Because there is a wide variety of pool types, the installation instructions in this booklet may not be suitable for all pools. It is recommended that you consult with your dealer if the methods outlined here are not EASILY adapted to your pool. Your dealer may be able to advise you of methods better suited for your pool.

1/09

**COLOR CASCADE™
WATERFALL FOUNTAIN
INSTALLATION, PARTS, & WARRANTY
ITEM NO. 54514**

WARRANTY

FULL ONE-YEAR WARRANTY

Poolmaster warrants to you, the owner, that if any part of your fountain fails within one year of the original purchase date because of a defect in materials or workmanship, it will remedy the defect at no cost to you except shipping.

THIS WARRANTY DOES NOT COVER THE FOLLOWING:

- INCIDENTAL OR CONSEQUENTIAL DAMAGES
- Fountains that have been used for purposes they were not intended for, such as commercial uses
- Fountains that have been misused, modified, or Fountain Head has been disassembled
- Clogging of the outlet jets
(with proper filtration the jets will not clog)
- No warranty against personal injury or damage to any other pool equipment as a result of the installation or operation of this fountain is expressed or implied.

YOUR RIGHTS UNDER STATE LAW

This warranty gives you specific legal rights, and you may also have other rights which vary from state to state. Some states do not allow the exclusion or limitation of incidental and consequential damages, so the above exclusion may not apply to you.

**FOR ADDITIONAL INFORMATION GO TO
WWW.POOLMASTER.COM**

HOW TO GET SERVICE UNDER THIS WARRANTY

You must provide proof of original purchase, a sales slip to show when your warranty period begins. Contact your dealer or Poolmaster for parts or service.

Poolmaster, Inc.
P.O. Box 340308
Sacramento, CA 95834-0308
Phone: 1-800-854-1492

