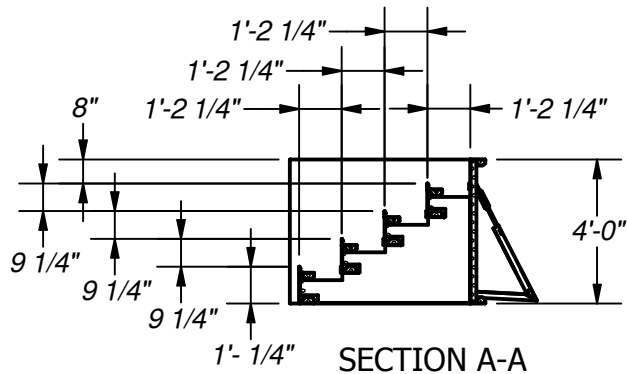
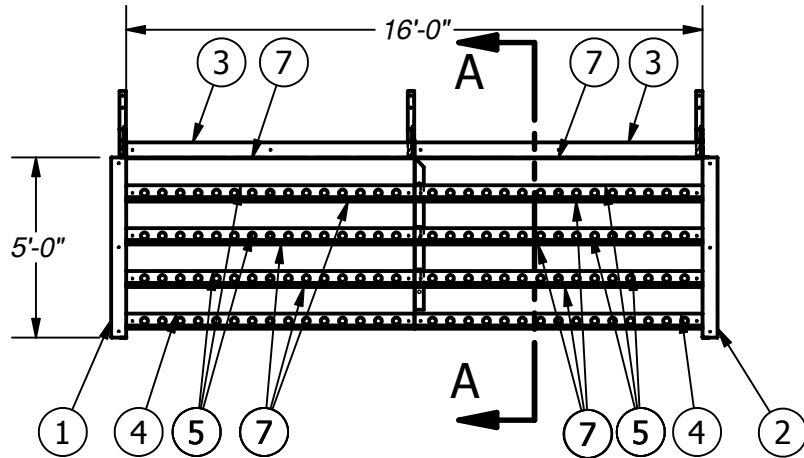




Name: 16'-0" POURED STEP W/ 6" RADIUS CORNERS (48")

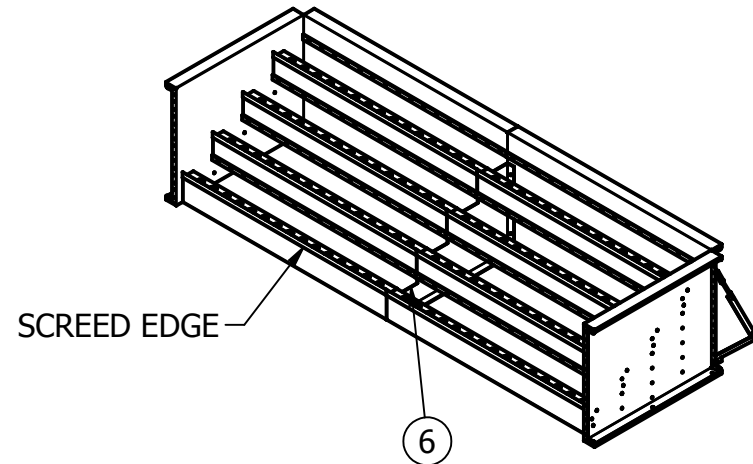
Number: S1600SP44800XX2Z

250 Route 61 South, Schuylkill Haven, PA 17972 • 570-385-4733 • fax: 570-385-1318 • CustomerService@CardinalSystemsinc.com



SECTION A-A

PARTS LIST			
ITEM	PART NUMBER	QTY	DESCRIPTION
1	SP1312	1	5'-0" STEP PANEL
2	SP1313	1	5'-0" STEP PANEL
3	SP0458	2	8'-0" STEP PANEL W/ 2Z (48")
4	PT2153	2	8'-0" POURED TREAD (10 1/4")
5	PT4901	6	8'-0" POURED TREAD W/ 2Z
6	TS0340	1	4'-9" POURED TREAD SUPPORT
7	LT0024	8	8'-0" LINER TRACK
	CS600OPT	3	A-FRAME TURNBUCKLE ASSEMBLY
	SP0745-6N-3	4	BOX OF 3 - 6'-0" SCREED EDGE
	CS608DH	3	18" DRIVE STAKE
	CS948SA	2	48" SQUARE CORNER ANGLE
	CS903FC	2	6" FOAM CORNER INSERT
	BP106ST	2	LARGE STEP BOLT PACK
	BP000TS	2	BOX OF TEK SCREWS



NOTE:
USE REBAR HOLE LOCATIONS
TO PIN WALL AND STEP DECK
SUPPORTS IN PLACE. THEN
POUR 4"-6" OF CONCRETE
AROUND THESE AREAS AND
UNDER THE ASSEMBLY FOR
REINFORCEMENT

Drawn By: jschaeffer

Date: 1/4/2018

Scale: SCALE

Notes: NOTES

This information is the confidential property of Cardinal Systems, Inc. Disclosure or duplication without proper written approval is strictly prohibited. Acceptance and use of this drawing constitutes knowledge and acceptance by the user of the terms and conditions set forth in the notice and warning which accompanied this drawing is incorporated herein and made part hereof and is found on Cardinal Systems, Inc's website at www.CardinalSystemsInc.com



CardinalSystemsInc.com