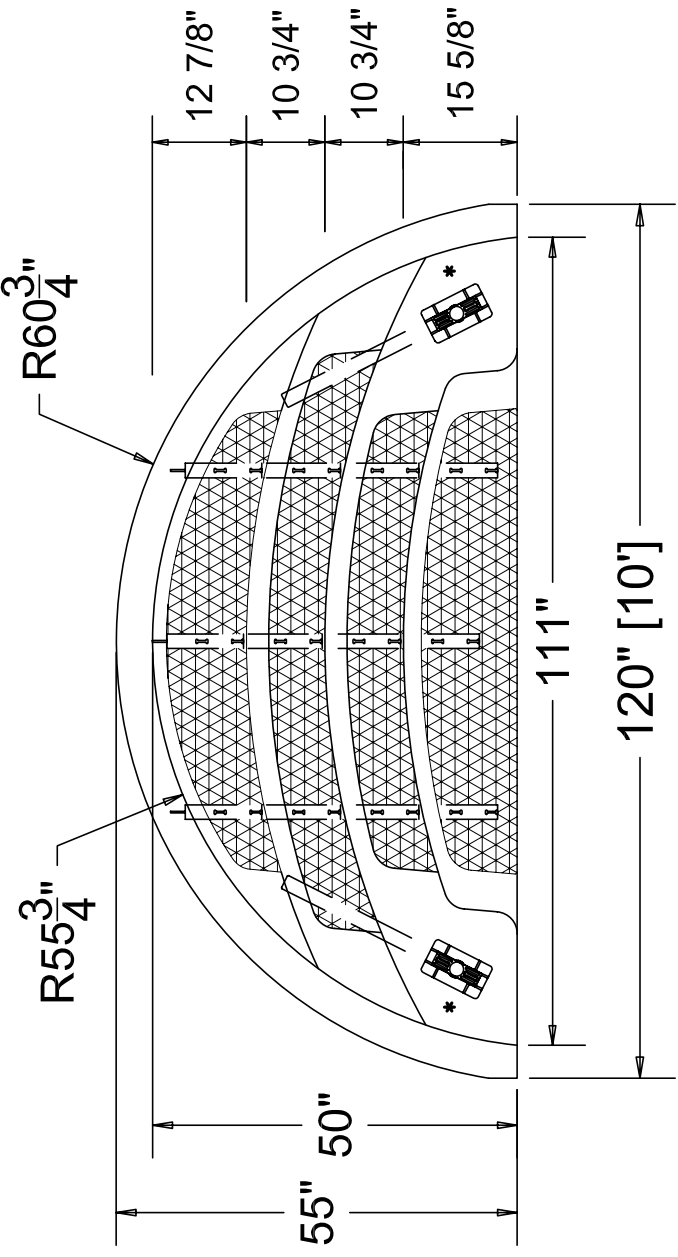


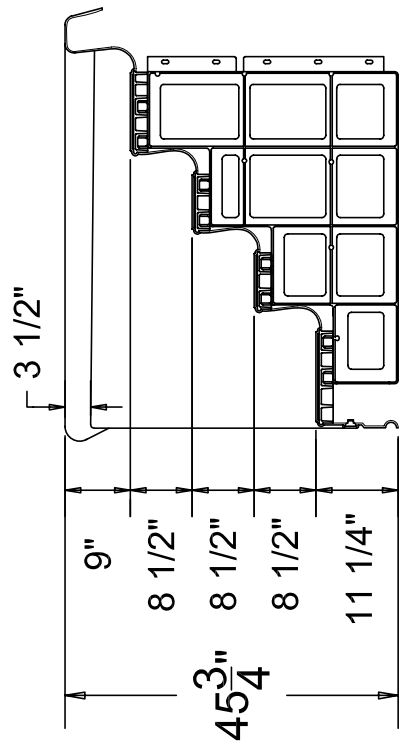
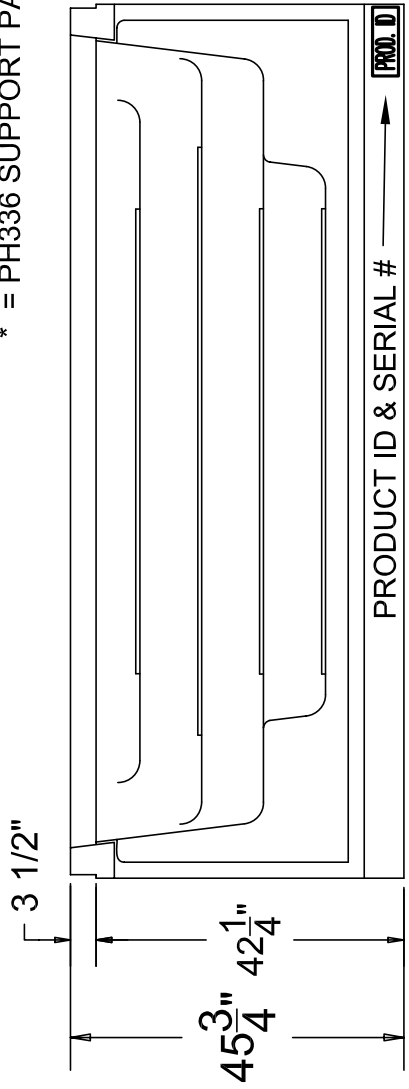
REPLACEMENT PARTS:  
 -PH3001 FACEPLATE REPLACEMENT KIT  
 -PH3010 FACEPLATE CORNER PROTECTOR

STEP KIT INCLUDES BRACES:  
 -(3) PH325 - 10' ROMAN BRACE  
 -(2) PH3261 - ROMAN / SUNLEDGE BRACE  
 -(2) PH336 - SUPPORT PADS



\* = PH336 SUPPORT PAD

A handrail is recommended to be installed with every step.



Each tread must be supported.

CONFIDENTIAL INFORMATION

Dimensions shown are approximate and are for planning only.

ALL MATERIAL CONTAINED HEREIN IS THE EXCLUSIVE PROPERTY OF LATHAM INTERNATIONAL AND MAY NOT BE COPIED OR DUPLICATED IN ANY FORM OR USED FOR ANY COMMERCIAL PURPOSE WITHOUT THE EXPRESSED WRITTEN CONSENT OF LATHAM INTERNATIONAL

# THERMOPLASTIC 10' STR. ROMAN STANDARD SIT-N-STEP

**PART #:** ST1024B

**WEIGHT:** N/A  
**MACHINE TIME:** N/A  
**FILE/DIRECTORY:**

TOLERANCES EXCEPT AS NOTED	MATERIAL:	DATE:
0/0 0.0 0.00 0.000 0"		1/01/2011
±1/8 ±0.25 ±0.0625 ±0.03125 ±1/2"		

DRAWN BY:	SHEET:	OF:
	1	1

**NOTES:**

