

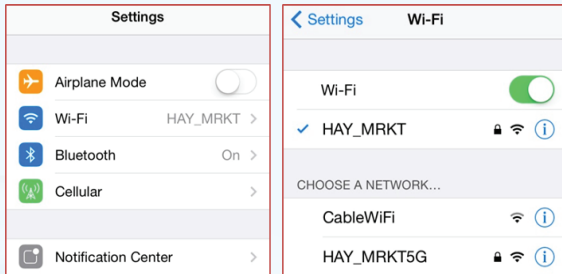


OmniLogic® Pre-Site Checklist

Homeowner

#1 Distance of OmniLogic base unit to Wireless Router?

You may need to increase your router strength or install a wireless extender if your router's signal cannot reach the base unit. You can check the wireless strength by turning on your phone's Wifi next to where the OmniLogic will be installed.

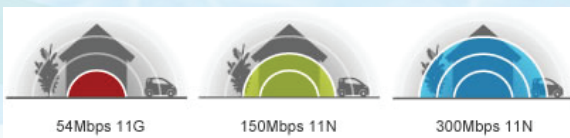


#2 Is the Router a modem/router combo provided by your cable company or is it a name-brand router such as NetGear, Linksys, TP-Link, Airport, Asus, etc?

Modem/router combos may come from the cable provider with added security or firewalls that may obstruct the wireless connection. You may need to adjust your settings.

#3 Is your Router signal G, N, or AC?

A Wireless 300Mbps 'N' signal is recommended. A wireless 'G' signal covers about half the distance of an 'N' signal.



OmniLogic Pre-Site Checklist - Homeowner

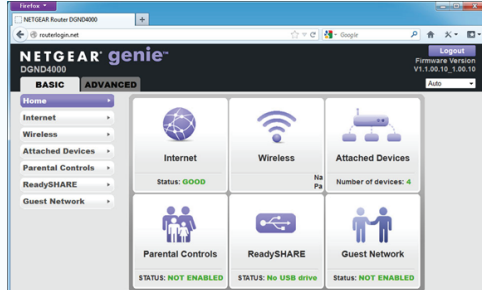
#4 You may need to access your router settings to:

- Find the technical specifications
- Find SSID/Network Name
- Find and adjust Security Settings/Passwords
- Disable Parental Controls
- Adjust GHz frequency and channels

Look on the back of your router to see how to enter the router's settings.

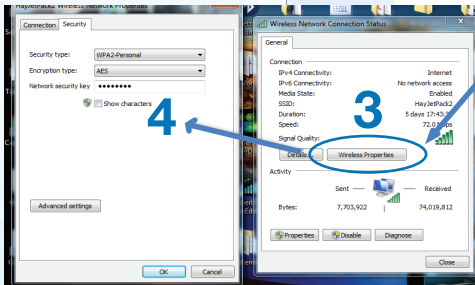
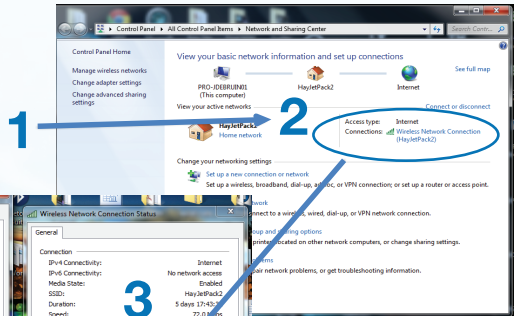
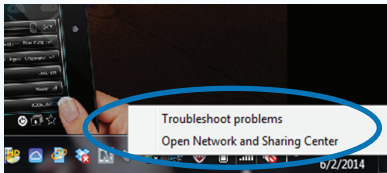


Example: This is on the back of a Netgear router



#5 To configure OmniLogic wireless connectivity, you need to identify the following from your router or computer:

- What is the exact Network Name or SSID (case sensitive)?
- What is the type of security encryption?
- What is your network password (case sensitive)?



To view OmniLogic tutorials please visit: www.hayward.com/omnivideos

To take a closer look or see other Hayward products please go to:
www.hayward.com or call 1-844-365-6442



ORG-OLCLHOB